

DTP0



DTP2



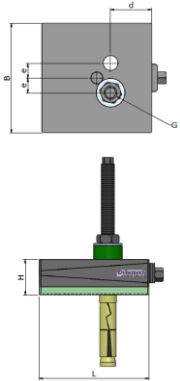
DTP4



DTP6

Dynemech Wedge mounts, Series DTP-150 have a height of 150mm at mean position to help proper cleaning and repairing under the machines, with specs similar to series DT.

Model	Load Capacity Kg/pc	Length (L) mm	Width (B) mm	Height (H) at mean position (mm)	d (mm)	e (mm)	Bore G (mm)	Adjustment Range (mm)	Bottom pad Type	Bottom pad Thickness (mm)	SW1 (mm)	SW2 (mm)	Coeff. of Friction against Concrete	Natural Frequency at Max. Load (Hz)	Temperature Range (°C)	Color	Applications
DTP0-u-150-18T-FG-DG	900	100	100	150	42	23	18	+3/-3	Du	15	19	10	0.9	18	From -15 to 80	Dark Grey/Green	Applications: Tool Room Machines, Plastic Injection Moulding Machines, Pressure Die Casting Machines, Shaper, Printing and Textile Machines etc.
DTP1-u-150-22T-FG-DG	1100	115	115	150	50	24	22	+4/-4	Du	15	19	10	0.9	18	From -15 to 80	Dark Grey/Green	
DTP2-u-150-22T-FG-DG	1800	150	150	150	60	23	22	+5/-5	Du	15	22	12	0.9	18	From -15 to 80	Dark Grey/Green	
DTP3-u-150-28T-FG-DG	3200	200	200	150	75	27	28	+6/-6	Du	15	22	12	0.9	18	From -15 to 80	Dark Grey/Green	
DTP4-u-150-28T-FG-DG	4000	200	250	150	95	27	28	+9/-9	Du	15	27	14	0.9	18	From -15 to 80	Dark Grey/Green	
DTP5-u-150-28T-FG-DG	6400	250	320	150	125	55	28	+9/-9	Du	15	32	18	0.9	18	From -15 to 80	Dark Grey/Green	
DTP6-u-150-30T-FG-DG	9600	300	400	150	148	50	30	+10/-10	Du	15	32	18	0.9	18	From -15 to 80	Dark Grey/Green	
DTP7-u-150-32T-FG-DG	16000	400	500	150	200	70	32	+10/-10	Du	15	39	22	0.9	18	From -15 to 80	Dark Grey/Green	
DTP0-u-10-145-18T-FG-DG	900	100	100	145	42	23	18	+3/-3	Du-10	10	19	10	0.9	25	From -15 to 80	Dark Grey/Green	Applications: Tool Room Machines, Plastic Injection Moulding Machines, Pressure Die Casting Machines, Shaper, Printing and Textile Machines etc.
DTP1-u-10-145-22T-FG-DG	1100	115	115	145	50	24	22	+4/-4	Du-10	10	19	10	0.9	25	From -15 to 80	Dark Grey/Green	
DTP2-u-10-145-22T-FG-DG	1800	150	150	145	60	23	22	+5/-5	Du-10	10	22	12	0.9	25	From -15 to 80	Dark Grey/Green	
DTP3-u-10-145-28T-FG-DG	3200	200	200	145	75	27	28	+6/-6	Du-10	10	22	12	0.9	25	From -15 to 80	Dark Grey/Green	
DTP4-u-10-145-28T-FG-DG	4000	200	250	145	95	27	28	+9/-9	Du-10	10	27	14	0.9	25	From -15 to 80	Dark Grey/Green	
DTP5-u-10-145-28T-FG-DG	6400	250	320	145	125	55	28	+9/-9	Du-10	10	32	18	0.9	25	From -15 to 80	Dark Grey/Green	
DTP6-u-10-145-30T-FG-DG	9600	300	400	145	148	50	30	+10/-10	Du-10	10	32	18	0.9	25	From -15 to 80	Dark Grey/Green	
DTP7-u-10-145-32T-FG-DG	16000	400	500	145	200	70	32	+10/-10	Du-10	10	39	22	0.9	25	From -15 to 80	Dark Grey/Green	
DTP0-u-12-147-18T-FG-DG	900	100	100	147	42	23	18	+3/-3	Du-12	12	19	10	0.9	20	From -15 to 80	Dark Grey/Green	Applications: Tool Room Machines, Plastic Injection Moulding Machines, Pressure Die Casting Machines, Shaper, Printing and Textile Machines etc.
DTP1-u-12-147-22T-FG-DG	1100	115	115	147	50	24	22	+4/-4	Du-12	12	19	10	0.9	20	From -15 to 80	Dark Grey/Green	
DTP2-u-12-147-22T-FG-DG	1800	150	150	147	60	23	22	+5/-5	Du-12	12	22	12	0.9	20	From -15 to 80	Dark Grey/Green	
DTP3-u-12-147-28T-FG-DG	3200	200	200	147	75	27	28	+6/-6	Du-12	12	22	12	0.9	20	From -15 to 80	Dark Grey/Green	
DTP4-u-12-147-28T-FG-DG	4000	200	250	147	95	27	28	+9/-9	Du-12	12	27	14	0.9	20	From -15 to 80	Dark Grey/Green	
DTP5-u-12-147-28T-FG-DG	6400	250	320	147	125	55	28	+9/-9	Du-12	12	32	18	0.9	20	From -15 to 80	Dark Grey/Green	
DTP6-u-12-147-30T-FG-DG	9600	300	400	147	148	50	30	+10/-10	Du-12	12	32	18	0.9	20	From -15 to 80	Dark Grey/Green	
DTP7-u-12-147-32T-FG-DG	16000	400	500	147	200	70	32	+10/-10	Du-12	12	39	22	0.9	20	From -15 to 80	Dark Grey/Green	



DTP0



DTP2

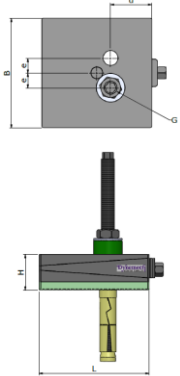


DTP4



DTP6

Model	Load Capacity Kg/pc	Length (L) mm	Width (B) mm	Height (H) at mean position (mm)	d (mm)	e (mm)	Bore G (mm)	Adjustment Range (mm)	Bottom pad Type	Bottom pad Thickness (mm)	SW1 (mm)	SW2 (mm)	Coeff. of Friction against Concrete	Natural Frequency at Max. Load (Hz)	Temperature Range (°C)	Color	Applications
DTP0-m-150-18T-FG-DG	1000	100	100	150	42	23	18	+3/-3	Dm	15	19	10	0.7	30	From -15 to 80	Dark Grey/Green	Applications: Power Presses, Stamping Machines, Shearing Machines, Punching Machines. For machines with high vertical impact.
DTP1-m-150-22T-FG-DG	1400	115	115	150	50	24	22	+4/-4	Dm	15	19	10	0.7	30	From -15 to 80	Dark Grey/Green	
DTP2-m-150-22T-FG-DG	2200	150	150	150	60	23	22	+5/-5	Dm	15	22	12	0.7	30	From -15 to 80	Dark Grey/Green	
DTP3-m-150-28T-FG-DG	4000	200	200	150	75	27	28	+6/-6	Dm	15	22	12	0.7	30	From -15 to 80	Dark Grey/Green	
DTP4-m-150-28T-FG-DG	5000	200	250	150	95	27	28	+9/-9	Dm	15	27	14	0.7	30	From -15 to 80	Dark Grey/Green	
DTP5-m-150-28T-FG-DG	8000	250	320	150	125	55	28	+9/-9	Dm	15	32	18	0.7	30	From -15 to 80	Dark Grey/Green	
DTP6-m-150-30T-FG-DG	12000	300	400	150	148	50	30	+10/-10	Dm	15	32	18	0.7	30	From -15 to 80	Dark Grey/Green	
DTP7-m-150-32T-FG-DG	20000	400	500	150	200	70	32	+10/-10	Dm	15	39	22	0.7	30	From -15 to 80	Dark Grey/Green	



DT0



DT2

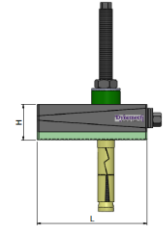
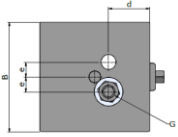


DT4



DT6

Model	Load Capacity Kg/pc	Length (L) mm	Width (B) mm	Height (H) at mean position (mm)	d (mm)	e (mm)	Bore G (mm)	Adjustment Range (mm)	Bottom pad Type	Bottom pad Thickness (mm)	SW1 (mm)	SW2 (mm)	Coeff. of Friction against Concrete	Natural Frequency at Max. Load (Hz)	Temperature Range (°C)	Color	Applications
DTP0-i-160-18T-FG-DG	1400	100	100	160	42	23	18	+3/-3	Di	25	19	10	0.8	7	From -15 to 80	Dark Grey/Green	Applications: Power Presses, Stamping Machines, Shearing Machines, Punching Machines. For machines with high vertical impact.
DTP1-i-160-22T-FG-DG	1800	115	115	160	50	24	22	+4/-4	Di	25	19	10	0.8	7	From -15 to 80	Dark Grey/Green	
DTP2-i-160-22T-FG-DG	2900	150	150	160	60	23	22	+5/-5	Di	25	22	12	0.8	7	From -15 to 80	Dark Grey/Green	
DTP3-i-160-28T-FG-DG	5200	200	200	160	75	27	28	+6/-6	Di	25	22	12	0.8	7	From -15 to 80	Dark Grey/Green	
DTP4-i-160-28T-FG-DG	6500	200	250	160	95	27	28	+9/-9	Di	25	27	14	0.8	7	From -15 to 80	Dark Grey/Green	
DTP5-i-160-28T-FG-DG	10000	250	320	160	125	55	28	+9/-9	Di	25	32	18	0.8	7	From -15 to 80	Dark Grey/Green	
DTP6-i-160-30T-FG-DG	15000	300	400	160	148	50	30	+10/-10	Di	25	32	18	0.8	7	From -15 to 80	Dark Grey/Green	
DTP7-i-160-32T-FG-DG	26000	400	500	160	200	70	32	+10/-10	Di	25	39	22	0.8	7	From -15 to 80	Dark Grey/Green	



DTP0



DTP2

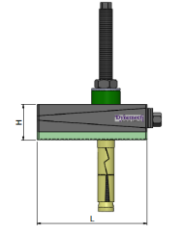
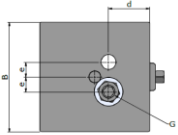


DTP4



DTP6

Model	Load Capacity Kg/pc	Length (L) mm	Width (B) mm	Height (H) at mean position (mm)	d (mm)	e (mm)	Bore G (mm)	Adjustment Range (mm)	Bottom pad Type	Bottom pad Thickness (mm)	SW1 (mm)	SW2 (mm)	Coeff. of Friction against Concrete	Natural Frequency at Max. Load (Hz)	Temperature Range (°C)	Color	Applications
DTP0-p1-150-18T-FG-DG	400	100	100	150	42	23	18	+3/-3	Dp1	15	19	10	0.8	7	From -15 to 80	Dark Grey/Green	Applications: Power Presses, Stamping Machines, Shearing Machines, Punching Machines. For machines with high vertical impact.
DTP1-p1-150-22T-FG-DG	530	115	115	150	50	24	22	+4/-4	Dp1	15	19	10	0.8	7	From -15 to 80	Dark Grey/Green	
DTP2-p1-150-22T-FG-DG	900	150	150	150	60	23	22	+5/-5	Dp1	15	22	12	0.8	7	From -15 to 80	Dark Grey/Green	
DTP3-p1-150-28T-FG-DG	1600	200	200	150	75	27	28	+6/-6	Dp1	15	22	12	0.8	7	From -15 to 80	Dark Grey/Green	
DTP4-p1-150-28T-FG-DG	2000	200	250	150	95	27	28	+9/-9	Dp1	15	27	14	0.8	7	From -15 to 80	Dark Grey/Green	
DTP5-p1-150-28T-FG-DG	3200	250	320	150	125	55	28	+9/-9	Dp1	15	32	18	0.8	7	From -15 to 80	Dark Grey/Green	
DTP6-p1-150-30T-FG-DG	4800	300	400	150	148	50	30	+10/-10	Dp1	15	32	18	0.8	7	From -15 to 80	Dark Grey/Green	
DTP7-p1-150-32T-FG-DG	8000	400	500	150	200	70	32	+10/-10	Dp1	15	39	22	0.8	7	From -15 to 80	Dark Grey/Green	
DTP0-p2-155-18T-FG-DG	500	100	100	155	42	23	18	+3/-3	Dp2	20	19	10	0.8	12	From -15 to 80	Dark Grey/Green	Applications: Medium Presses, Punching Presses, Centreless Grinding Machines, Gear Shapers, High Speed Machines on upper floors.
DTP1-p2-155-22T-FG-DG	660	115	115	155	50	24	22	+4/-4	Dp2	20	19	10	0.8	12	From -15 to 80	Dark Grey/Green	
DTP2-p2-155-22T-FG-DG	1120	150	150	155	60	23	22	+5/-5	Dp2	20	22	12	0.8	12	From -15 to 80	Dark Grey/Green	
DTP3-p2-155-28T-FG-DG	2000	200	200	155	75	27	28	+6/-6	Dp2	20	22	12	0.8	12	From -15 to 80	Dark Grey/Green	
DTP4-p2-155-28T-FG-DG	2500	200	250	155	95	27	28	+9/-9	Dp2	20	27	14	0.8	12	From -15 to 80	Dark Grey/Green	
DTP5-p2-155-28T-FG-DG	4000	250	320	155	125	55	28	+9/-9	Dp2	20	32	18	0.8	12	From -15 to 80	Dark Grey/Green	
DTP6-p2-155-30T-FG-DG	6000	300	400	155	148	50	30	+10/-10	Dp2	20	32	18	0.8	12	From -15 to 80	Dark Grey/Green	
DTP7-p2-155-32T-FG-DG	10000	400	500	155	200	70	32	+10/-10	Dp2	20	39	22	0.8	12	From -15 to 80	Dark Grey/Green	
DTP0-p3-159-18T-FG-DG	600	100	100	159	42	23	18	+3/-3	Dp3	24	19	10	0.8	7	From -15 to 80	Dark Grey/Green	Applications: Tool Room Machines on suspended Floors, Light Weight Presses, Compressors etc.
DTP1-p3-159-22T-FG-DG	790	115	115	159	50	24	22	+4/-4	Dp3	24	19	10	0.8	7	From -15 to 80	Dark Grey/Green	
DTP2-p3-159-22T-FG-DG	1350	150	150	159	60	23	22	+5/-5	Dp3	24	22	12	0.8	7	From -15 to 80	Dark Grey/Green	
DTP3-p3-159-28T-FG-DG	2400	200	200	159	75	27	28	+6/-6	Dp3	24	22	12	0.8	7	From -15 to 80	Dark Grey/Green	
DTP4-p3-159-28T-FG-DG	3000	200	250	159	95	27	28	+9/-9	Dp3	24	27	14	0.8	7	From -15 to 80	Dark Grey/Green	
DTP5-p3-159-28T-FG-DG	4800	250	320	159	125	55	28	+9/-9	Dp3	24	32	18	0.8	7	From -15 to 80	Dark Grey/Green	
DTP6-p3-159-30T-FG-DG	7200	300	400	159	148	50	30	+10/-10	Dp3	24	32	18	0.8	7	From -15 to 80	Dark Grey/Green	
DTP7-p3-159-32T-FG-DG	12000	400	500	159	200	70	32	+10/-10	Dp3	24	39	22	0.8	7	From -15 to 80	Dark Grey/Green	



DTP0



DTP2

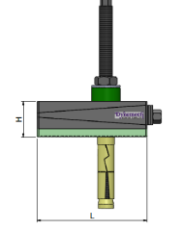
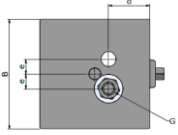


DTP4



DTP6

Model	Load Capacity Kg/pc	Length (L) mm	Width (B) mm	Height (H) at mean position (mm)	d (mm)	e (mm)	Bore G (mm)	Adjustment Range (mm)	Bottom pad Type	Bottom pad Thickness (mm)	SW1 (mm)	SW2 (mm)	Coeff. of Friction against Concrete	Natural Frequency at Max. Load (Hz)	Temperature Range (°C)	Color	Applications
DTP0-s1-155-18T-FG-DG	500	100	100	155	42	23	18	+3/-3	Ds1	20	19	10	0.8	15	From -15 to 80	Dark Grey/Green	Applications: Tool Room Machines, Plastic Injection Moulding Machines, Pressure Die Casting Machines, Shaper, Printing and Textile Machines etc.
DTP1-s1-155-22T-FG-DG	600	115	115	155	50	24	22	+4/-4	Ds1	20	19	10	0.8	15	From -15 to 80	Dark Grey/Green	
DTP2-s1-155-22T-FG-DG	1000	150	150	155	60	23	22	+5/-5	Ds1	20	22	12	0.8	15	From -15 to 80	Dark Grey/Green	
DTP3-s1-155-28T-FG-DG	1800	200	200	155	75	27	28	+6/-6	Ds1	20	22	12	0.8	15	From -15 to 80	Dark Grey/Green	
DTP4-s1-155-28T-FG-DG	2200	200	250	155	95	27	28	+9/-9	Ds1	20	27	14	0.8	15	From -15 to 80	Dark Grey/Green	
DTP5-s1-155-28T-FG-DG	3500	250	320	155	125	55	28	+9/-9	Ds1	20	32	18	0.8	15	From -15 to 80	Dark Grey/Green	
DTP6-s1-155-30T-FG-DG	5200	300	400	155	148	50	30	+10/-10	Ds1	20	32	18	0.8	15	From -15 to 80	Dark Grey/Green	
DTP7-s1-155-32T-FG-DG	9500	400	500	155	200	70	32	+10/-10	Ds1	20	39	22	0.8	15	From -15 to 80	Dark Grey/Green	
DTP0-s2-160-18T-FG-DG	800	100	100	160	42	23	18	+3/-3	Ds2	25	19	10	0.8	8	From -15 to 80	Dark Grey/Green	Applications: Power Presses, Stamping Machines, Shearing Machines, Punching Machines. For machines with high vertical impact.
DTP1-s2-160-22T-FG-DG	950	115	115	160	50	24	22	+4/-4	Ds2	25	19	10	0.8	8	From -15 to 80	Dark Grey/Green	
DTP2-s2-160-22T-FG-DG	1600	150	150	160	60	23	22	+5/-5	Ds2	25	22	12	0.8	8	From -15 to 80	Dark Grey/Green	
DTP3-s2-160-28T-FG-DG	2800	200	200	160	75	27	28	+6/-6	Ds2	25	22	12	0.8	8	From -15 to 80	Dark Grey/Green	
DTP4-s2-160-28T-FG-DG	3500	200	250	160	95	27	28	+9/-9	Ds2	25	27	14	0.8	8	From -15 to 80	Dark Grey/Green	
DTP5-s2-160-28T-FG-DG	5500	250	320	160	125	55	28	+9/-9	Ds2	25	32	18	0.8	8	From -15 to 80	Dark Grey/Green	
DTP6-s2-160-30T-FG-DG	8500	300	400	160	148	50	30	+10/-10	Ds2	25	32	18	0.8	8	From -15 to 80	Dark Grey/Green	
DTP7-s2-160-32T-FG-DG	14000	400	500	160	200	70	32	+10/-10	Ds2	25	39	22	0.8	8	From -15 to 80	Dark Grey/Green	



DTP0



DTP2



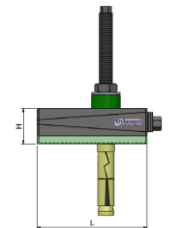
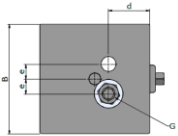
DTP4



DTP6

Model	Load Capacity Kg/pc	Length (L) mm	Width (B) mm	Height (H) at mean position (mm)	d (mm)	e (mm)	Bore G (mm)	Adjustment Range (mm)	Bottom pad Type	Bottom pad Thickness (mm)	SW1 (mm)	SW2 (mm)	Coeff. of Friction against Concrete	Natural Frequency at Max. Load (Hz)	Temperature Range (°C)	Color	Applications
-------	---------------------	---------------	--------------	----------------------------------	--------	--------	-------------	-----------------------	-----------------	---------------------------	----------	----------	-------------------------------------	-------------------------------------	------------------------	-------	--------------

DTP0-hs1-200-18T-FG-DG	2000	100	100	200	42	23	18	+3/-3	Dhs1	65	19	10	0.8	6	From -15 to 80	Dark Grey/Green	Applications : Forging Hammers, Heavy Gen Sets, Heavy Industrial machines, Test Rigs, Heavy presses etc.
DTP1-hs1-200-22T-FG-DG	2640	115	115	200	50	24	22	+4/-4	Dhs1	65	19	10	0.8	6	From -15 to 80	Dark Grey/Green	
DTP2-hs1-200-22T-FG-DG	4500	150	150	200	60	23	22	+5/-5	Dhs1	65	22	12	0.8	6	From -15 to 80	Dark Grey/Green	
DTP3-hs1-200-28T-FG-DG	8000	200	200	200	75	27	28	+6/-6	Dhs1	65	22	12	0.8	6	From -15 to 80	Dark Grey/Green	
DTP4-hs1-200-28T-FG-DG	10000	200	250	200	95	27	28	+9/-9	Dhs1	65	27	14	0.8	6	From -15 to 80	Dark Grey/Green	
DTP5-hs1-200-28T-FG-DG	16000	250	320	200	125	55	28	+9/-9	Dhs1	65	32	18	0.8	6	From -15 to 80	Dark Grey/Green	
DTP6-hs1-200-30T-FG-DG	24000	300	400	200	148	50	30	+10/-10	Dhs1	65	32	18	0.8	6	From -15 to 80	Dark Grey/Green	
DTP7-hs1-200-32T-FG-DG	40000	400	500	200	200	70	32	+10/-10	Dhs1	65	39	22	0.8	6	From -15 to 80	Dark Grey/Green	
DTP0-hs2-200-18T-FG-DG	800	100	100	200	42	23	18	+3/-3	Dhs2	65	19	10	0.8	4	From -15 to 80	Dark Grey/Green	Applications : Forging Hammers, Heavy Gen Sets, Heavy Industrial machines, Test Rigs, Heavy presses, crushers etc.
DTP1-hs2-200-22T-FG-DG	1060	115	115	200	50	24	22	+4/-4	Dhs2	65	19	10	0.8	4	From -15 to 80	Dark Grey/Green	
DTP2-hs2-200-22T-FG-DG	1800	150	150	200	60	23	22	+5/-5	Dhs2	65	22	12	0.8	4	From -15 to 80	Dark Grey/Green	
DTP3-hs2-200-28T-FG-DG	3200	200	200	200	75	27	28	+6/-6	Dhs2	65	22	12	0.8	4	From -15 to 80	Dark Grey/Green	
DTP4-hs2-200-28T-FG-DG	4000	200	250	200	95	27	28	+9/-9	Dhs2	65	27	14	0.8	4	From -15 to 80	Dark Grey/Green	
DTP5-hs2-200-28T-FG-DG	6400	250	320	200	125	55	28	+9/-9	Dhs2	65	32	18	0.8	4	From -15 to 80	Dark Grey/Green	
DTP6-hs2-200-30T-FG-DG	9600	300	400	200	148	50	30	+10/-10	Dhs2	65	32	18	0.8	4	From -15 to 80	Dark Grey/Green	
DTP7-hs2-200-32T-FG-DG	16000	400	500	200	200	70	32	+10/-10	Dhs2	65	39	22	0.8	4	From -15 to 80	Dark Grey/Green	
DTP0-hs3-185-18T-FG-DG	2800	100	100	185	42	23	18	+3/-3	Dhs3	50	19	10	0.8	7	From -15 to 80	Dark Grey/Green	Applications : Forging Hammers, Heavy Gen Sets, Heavy Industrial machines, Test Rigs, Heavy presses etc.
DTP1-hs3-185-22T-FG-DG	3700	115	115	185	50	24	22	+4/-4	Dhs3	50	19	10	0.8	7	From -15 to 80	Dark Grey/Green	
DTP2-hs3-185-22T-FG-DG	6300	150	150	185	60	23	22	+5/-5	Dhs3	50	22	12	0.8	7	From -15 to 80	Dark Grey/Green	
DTP3-hs3-185-28T-FG-DG	11200	200	200	185	75	27	28	+6/-6	Dhs3	50	22	12	0.8	7	From -15 to 80	Dark Grey/Green	
DTP4-hs3-185-28T-FG-DG	14000	200	250	185	95	27	28	+9/-9	Dhs3	50	27	14	0.8	7	From -15 to 80	Dark Grey/Green	
DTP5-hs3-185-28T-FG-DG	22400	250	320	185	125	55	28	+9/-9	Dhs3	50	32	18	0.8	7	From -15 to 80	Dark Grey/Green	
DTP6-hs3-185-30T-FG-DG	33600	300	400	185	148	50	30	+10/-10	Dhs3	50	32	18	0.8	7	From -15 to 80	Dark Grey/Green	
DTP7-hs3-185-32T-FG-DG	56000	400	500	185	200	70	32	+10/-10	Dhs3	50	39	22	0.8	7	From -15 to 80	Dark Grey/Green	
DTP0-hs4-185-18T-FG-DG	1200	100	100	185	42	23	18	+3/-3	Dhs4	50	19	10	0.8	5	From -15 to 80	Dark Grey/Green	Applications : Forging Hammers, Heavy Gen Sets, Heavy Industrial machines, Test Rigs, Heavy presses, crushers etc.
DTP1-hs4-185-22T-FG-DG	1580	115	115	185	50	24	22	+4/-4	Dhs4	50	19	10	0.8	5	From -15 to 80	Dark Grey/Green	
DTP2-hs4-185-22T-FG-DG	2700	150	150	185	60	23	22	+5/-5	Dhs4	50	22	12	0.8	5	From -15 to 80	Dark Grey/Green	
DTP3-hs4-185-28T-FG-DG	4800	200	200	185	75	27	28	+6/-6	Dhs4	50	22	12	0.8	5	From -15 to 80	Dark Grey/Green	
DTP4-hs4-185-28T-FG-DG	6000	200	250	185	95	27	28	+9/-9	Dhs4	50	27	14	0.8	5	From -15 to 80	Dark Grey/Green	
DTP5-hs4-185-28T-FG-DG	9600	250	320	185	125	55	28	+9/-9	Dhs4	50	32	18	0.8	5	From -15 to 80	Dark Grey/Green	
DTP6-hs4-185-30T-FG-DG	14400	300	400	185	148	50	30	+10/-10	Dhs4	50	32	18	0.8	5	From -15 to 80	Dark Grey/Green	
DTP7-hs4-185-32T-FG-DG	24000	400	500	185	200	70	32	+10/-10	Dhs4	50	39	22	0.8	5	From -15 to 80	Dark Grey/Green	
DTP0-hs5-215-18T-FG-DG	2800	100	100	215	42	23	18	+3/-3	Dhs5	80	19	10	0.8	5	From -15 to 80	Dark Grey/Green	Applications : Forging Hammers, Heavy Gen Sets, Heavy Industrial machines, Test Rigs, Heavy presses etc.
DTP1-hs5-215-22T-FG-DG	3700	115	115	215	50	24	22	+4/-4	Dhs5	80	19	10	0.8	5	From -15 to 80	Dark Grey/Green	
DTP2-hs5-215-22T-FG-DG	6300	150	150	215	60	23	22	+5/-5	Dhs5	80	22	12	0.8	5	From -15 to 80	Dark Grey/Green	
DTP3-hs5-215-28T-FG-DG	11200	200	200	215	75	27	28	+6/-6	Dhs5	80	22	12	0.8	5	From -15 to 80	Dark Grey/Green	
DTP4-hs5-215-28T-FG-DG	14000	200	250	215	95	27	28	+9/-9	Dhs5	80	27	14	0.8	5	From -15 to 80	Dark Grey/Green	
DTP5-hs5-215-28T-FG-DG	22400	250	320	215	125	55	28	+9/-9	Dhs5	80	32	18	0.8	5	From -15 to 80	Dark Grey/Green	
DTP6-hs5-215-30T-FG-DG	33600	300	400	215	148	50	30	+10/-10	Dhs5	80	32	18	0.8	5	From -15 to 80	Dark Grey/Green	
DTP7-hs5-215-32T-FG-DG	56000	400	500	215	200	70	32	+10/-10	Dhs5	80	39	22	0.8	5	From -15 to 80	Dark Grey/Green	



DTP0



DTP2

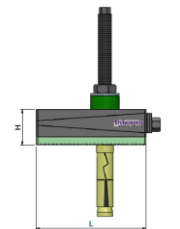
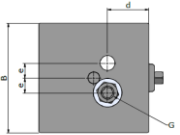


DTP4



DTP6

Model	Load Capacity Kg/pc	Length (L) mm	Width (B) mm	Height (H) at mean position (mm)	d (mm)	e (mm)	Bore G (mm)	Adjustment Range (mm)	Bottom pad Type	Bottom pad Thickness (mm)	SW1 (mm)	SW2 (mm)	Coeff. of Friction against Concrete	Natural Frequency at Max. Load (Hz)	Temperature Range (°C)	Color	Applications
DTP0-h-150-18T-FG-DG	3000	100	100	150	42	23	18	+3/-3	Dh	15	19	10	0.6	45	From -15 to 80	Dark Grey/Green	Applications : Very Heavy and long bed machines, long machining centres, planners etc.
DTP1-h-150-22T-FG-DG	3970	115	115	150	50	24	22	+4/-4	Dh	15	19	10	0.6	45	From -15 to 80	Dark Grey/Green	
DTP2-h-150-22T-FG-DG	6750	150	150	150	60	23	22	+5/-5	Dh	15	22	12	0.6	45	From -15 to 80	Dark Grey/Green	
DTP3-h-150-28T-FG-DG	12000	200	200	150	75	27	28	+6/-6	Dh	15	22	12	0.6	45	From -15 to 80	Dark Grey/Green	
DTP4-h-150-28T-FG-DG	15000	200	250	150	95	27	28	+9/-9	Dh	15	27	14	0.6	45	From -15 to 80	Dark Grey/Green	
DTP5-h-150-28T-FG-DG	24000	250	320	150	125	55	28	+9/-9	Dh	15	32	18	0.6	45	From -15 to 80	Dark Grey/Green	
DTP6-h-150-30T-FG-DG	36000	300	400	150	148	50	30	+10/-10	Dh	15	32	18	0.6	45	From -15 to 80	Dark Grey/Green	
DTP7-h-150-32T-FG-DG	60000	400	500	150	200	70	32	+10/-10	Dh	15	39	22	0.6	45	From -15 to 80	Dark Grey/Green	



DTP0



DTP2

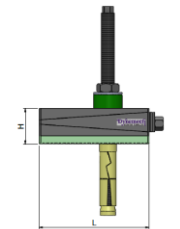
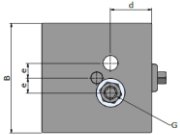


DTP4



DTP6

Model	Load Capacity Kg/pc	Length (L) mm	Width (B) mm	Height (H) at mean position (mm)	d (mm)	e (mm)	Bore G (mm)	Adjustment Range (mm)	Bottom pad Type	Bottom pad Thickness (mm)	SW1 (mm)	SW2 (mm)	Coeff. of Friction against Concrete	Natural Frequency at Max. Load (Hz)	Temperature Range (°C)	Color	Applications
DTP0-a1-137-18T-FG-DG	1800	100	100	137	42	23	18	+3/-3	Da1	2	19	10	0.8	70	From -15 to 80	Dark Grey/Green	
DTP1-a1-137-22T-FG-DG	2300	115	115	137	50	24	22	+4/-4	Da1	2	19	10	0.8	70	From -15 to 80	Dark Grey/Green	
DTP2-a1-137-22T-FG-DG	4000	150	150	137	60	23	22	+5/-5	Da1	2	22	12	0.8	70	From -15 to 80	Dark Grey/Green	
DTP3-a1-137-28T-FG-DG	7200	200	200	137	75	27	28	+6/-6	Da1	2	22	12	0.8	70	From -15 to 80	Dark Grey/Green	
DTP4-a1-137-28T-FG-DG	9000	200	250	137	95	27	28	+9/-9	Da1	2	27	14	0.8	70	From -15 to 80	Dark Grey/Green	
DTP5-a1-137-28T-FG-DG	14400	250	320	137	125	55	28	+9/-9	Da1	2	32	18	0.8	70	From -15 to 80	Dark Grey/Green	
DTP6-a1-137-30T-FG-DG	21600	300	400	137	148	50	30	+10/-10	Da1	2	32	18	0.8	70	From -15 to 80	Dark Grey/Green	
DTP7-a1-137-32T-FG-DG	36000	400	500	137	200	70	32	+10/-10	Da1	2	39	22	0.8	70	From -15 to 80	Dark Grey/Green	



DTP0



DTP2

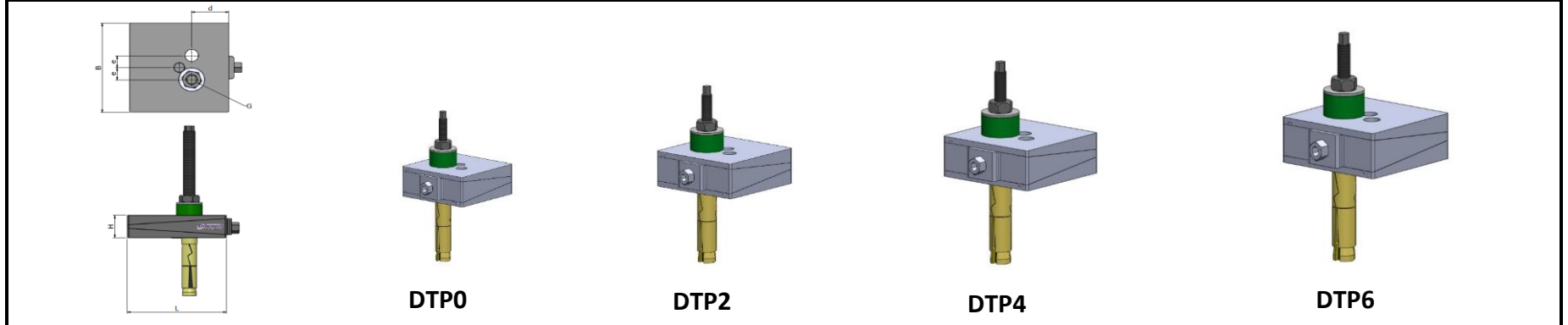


DTP4



DTP6

Model	Load Capacity Kg/pc	Length (L) mm	Width (B) mm	Height (H) at mean position (mm)	d (mm)	e (mm)	Bore G (mm)	Adjustment Range (mm)	Bottom pad Type	Bottom pad Thickness (mm)	SW1 (mm)	SW2 (mm)	Coeff. of Friction against Concrete	Natural Frequency at Max. Load (Hz)	Temperature Range (°C)	Color	Applications
DTP0-a2-143-18T-FG-DG	1000	100	100	143	42	23	18	+3/-3	Da2	8	19	10	0.9	45	From -15 to 80	Dark Grey/Green	
DTP1-a2-143-22T-FG-DG	1300	115	115	143	50	24	22	+4/-4	Da2	8	19	10	0.9	45	From -15 to 80	Dark Grey/Green	
DTP2-a2-143-22T-FG-DG	2250	150	150	143	60	23	22	+5/-5	Da2	8	22	12	0.9	45	From -15 to 80	Dark Grey/Green	
DTP3-a2-143-28T-FG-DG	4000	200	200	143	75	27	28	+6/-6	Da2	8	22	12	0.9	45	From -15 to 80	Dark Grey/Green	
DTP4-a2-143-28T-FG-DG	5000	200	250	143	95	27	28	+9/-9	Da2	8	27	14	0.9	45	From -15 to 80	Dark Grey/Green	
DTP5-a2-143-28T-FG-DG	8000	250	320	143	125	55	28	+9/-9	Da2	8	32	18	0.9	45	From -15 to 80	Dark Grey/Green	
DTP6-a2-143-30T-FG-DG	12000	300	400	143	148	50	30	+10/-10	Da2	8	32	18	0.9	45	From -15 to 80	Dark Grey/Green	
DTP7-a2-143-32T-FG-DG	20000	400	500	143	200	70	32	+10/-10	Da2	8	39	22	0.9	45	From -15 to 80	Dark Grey/Green	



Model	Load Capacity Kg/pc	Length (L) mm	Width (B) mm	Height (H) at mean position (mm)	d (mm)	e (mm)	Bore G (mm)	Adjustment Range (mm)	Bottom pad Type	Bottom pad Thickness (mm)	SW1 (mm)	SW2 (mm)	Coeff. of Friction against Concrete	Natural Frequency at Max. Load (Hz)	Temperature Range (°C)	Color	Applications
DTP0-150-18T-FG-DG	2600	100	100	150	42	23	18	+3/-3	X	X	19	10	X	X	From -15 to 80	Dark Grey/Green	Applications : For levelling of all Precision Machines.
DTP1-150-22T-FG-DG	3600	115	115	150	50	24	22	+4/-4	X	X	19	10	X	X	From -15 to 80	Dark Grey/Green	
DTP2-150-22T-FG-DG	5800	150	150	150	60	23	22	+5/-5	X	X	22	12	X	X	From -15 to 80	Dark Grey/Green	
DTP3-150-28T-FG-DG	10400	200	200	150	75	27	28	+6/-6	X	X	22	12	X	X	From -15 to 80	Dark Grey/Green	
DTP4-150-28T-FG-DG	13000	200	250	150	95	27	28	+9/-9	X	X	27	14	X	X	From -15 to 80	Dark Grey/Green	
DTP5-150-28T-FG-DG	20000	250	320	150	125	55	28	+9/-9	X	X	32	18	X	X	From -15 to 80	Dark Grey/Green	
DTP6-150-30T-FG-DG	30000	300	400	150	148	50	30	+10/-10	X	X	32	18	X	X	From -15 to 80	Dark Grey/Green	
DTP7-150-32T-FG-DG	52000	400	500	150	160	70	32	+10/-10	X	X	39	22	X	X	From -15 to 80	Dark Grey/Green	