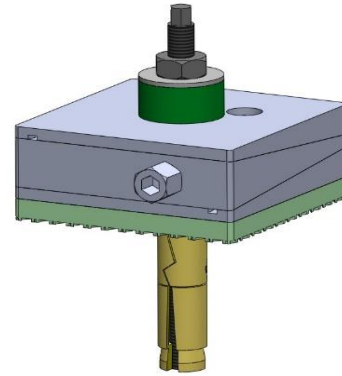
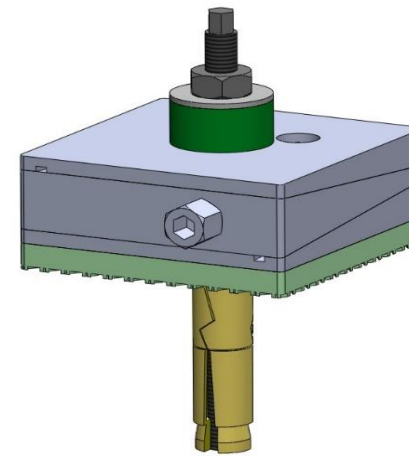


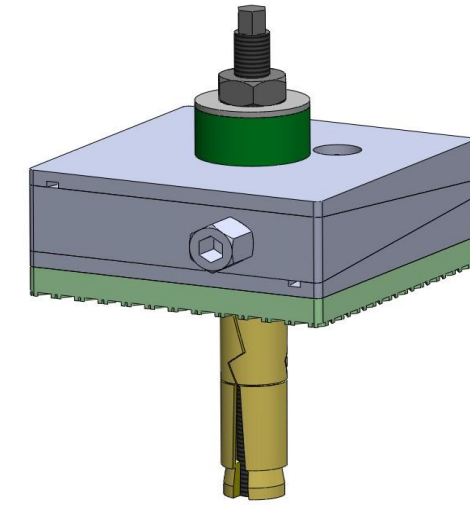
DTO1



DTO3



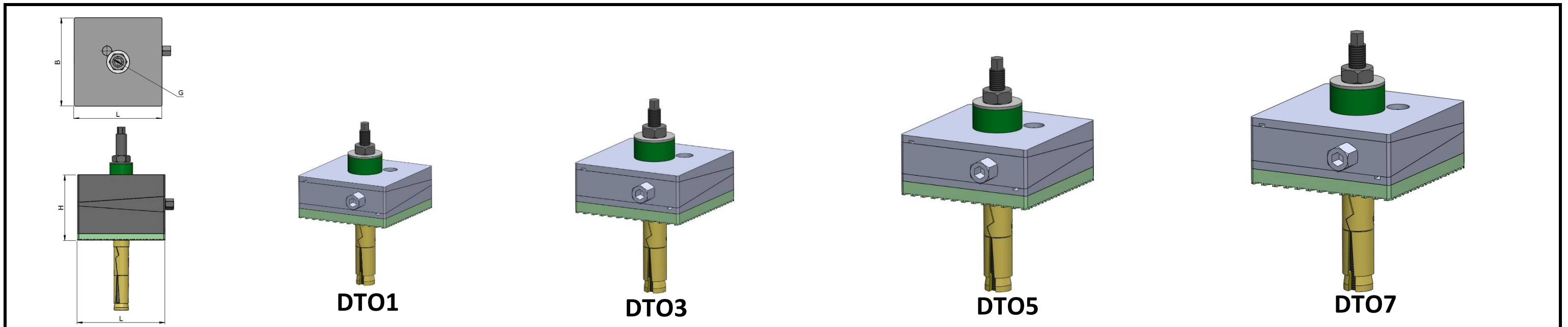
DTO5



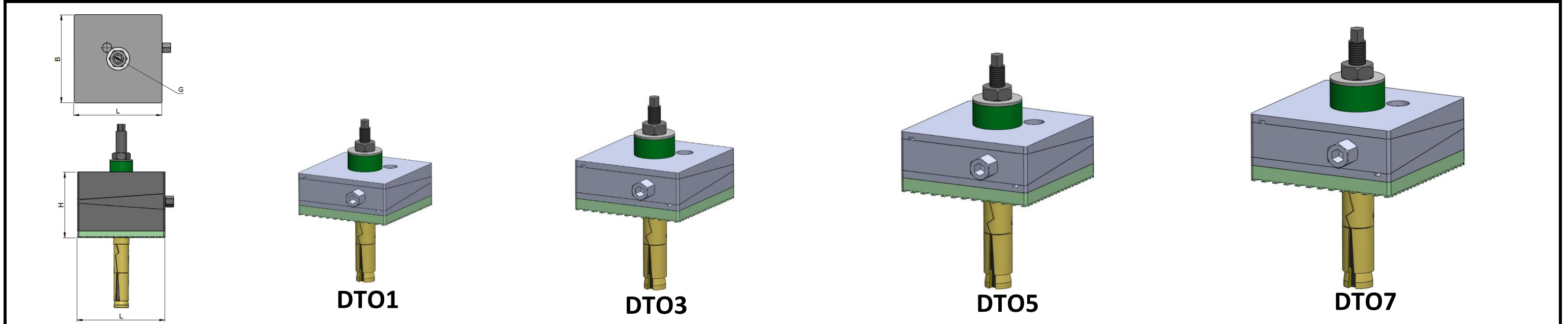
DTO7

Dynemech Wedge mounts, Series DTO mounts is designed for machines which are top heavy or have eccentric motion or machines which must be anchored to the ground. Boring machine, Drilling and milling machines, machining centres, special purpose machines, long lathes, long planers, power presses etc.

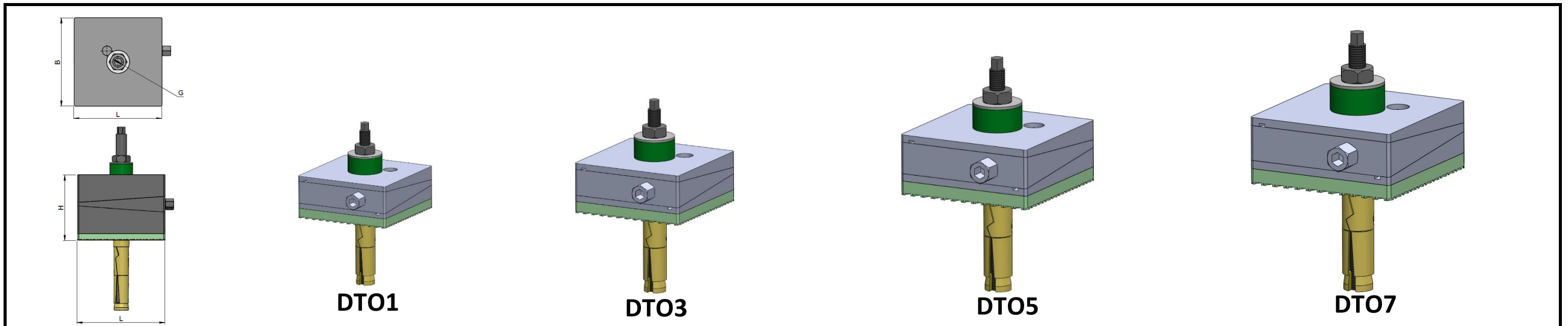
Model	Load Capacity Kg/pc	Length (L) mm	Width (B) mm	Height (H) at mean position (mm)	BORE* Ø(mm) G	Adjustment Range (mm)	Bottom pad Type	Bottom pad Thickness (mm)	SW1 (mm)	SW2 (mm)	Coeff. of Friction against Concrete	Natural Frequency at Max. Load (Hz)	Temperature Range (°C)	Color	Applications
DTO1-u-26T-FG-GR	1100	115	115	59	26	+4/-4	Du	15	19	10	0.9	18	From -16 to 90	Dark Grey/Green	Applications: Tool Room Machines, Plastic Injection Moulding Machines, Pressure Die Casting Machines, Shaper, Printing and Textile Machines etc.
DTO2-u-26T-FG-GR	1800	150	150	65	26	+5/-5	Du	15	22	12	0.9	18	From -16 to 90	Dark Grey/Green	
DTO3-u-32T-FG-GR	3200	200	200	65	32	+6/-6	Du	15	22	12	0.9	18	From -16 to 90	Dark Grey/Green	
DTO4-u-32T-FG-GR	4000	200	250	85	32	+9/-9	Du	15	27	14	0.9	18	From -16 to 90	Dark Grey/Green	
DTO5-u-42T-FG-GR	6400	250	320	90	42	+9/-9	Du	15	32	18	0.9	18	From -16 to 90	Dark Grey/Green	
DTO6-u-42T-FG-GR	9600	300	400	90	42	+10/-10	Du	15	32	18	0.9	18	From -16 to 90	Dark Grey/Green	
DTO7-u-42T-FG-GR	16000	400	500	95	42	+10/-10	Du	15	39	22	0.9	18	From -16 to 90	Dark Grey/Green	
DTO1-u-10-26T-FG-GR	1100	115	115	54	26	+4/-4	Du-10	10	19	10	0.9	25	From -16 to 90	Dark Grey/Green	Applications: Tool Room Machines, Plastic Injection Moulding Machines, Pressure Die Casting Machines, Shaper, Printing and Textile Machines etc.
DTO2-u-10-26T-FG-GR	1800	150	150	60	26	+5/-5	Du-10	10	22	12	0.9	25	From -16 to 90	Dark Grey/Green	
DTO3-u-10-32T-FG-GR	3200	200	200	60	32	+6/-6	Du-10	10	22	12	0.9	25	From -16 to 90	Dark Grey/Green	
DTO4-u-10-32T-FG-GR	4000	200	250	80	32	+9/-9	Du-10	10	27	14	0.9	25	From -16 to 90	Dark Grey/Green	
DTO5-u-10-42T-FG-GR	6400	250	320	85	42	+9/-9	Du-10	10	32	18	0.9	25	From -16 to 90	Dark Grey/Green	
DTO6-u-10-42T-FG-GR	9600	300	400	85	42	+10/-10	Du-10	10	32	18	0.9	25	From -16 to 90	Dark Grey/Green	
DTO7-u-10-42T-FG-GR	16000	400	500	90	42	+10/-10	Du-10	10	39	22	0.9	25	From -16 to 90	Dark Grey/Green	
DTO1-u-12-26T-FG-GR	1100	115	115	56	26	+4/-4	Du-12	12	19	10	0.9	20	From -16 to 90	Dark Grey/Green	Applications: Tool Room Machines, Plastic Injection Moulding Machines, Pressure Die Casting Machines, Shaper, Printing and Textile Machines etc.
DTO2-u-12-26T-FG-GR	1800	150	150	62	26	+5/-5	Du-12	12	22	12	0.9	20	From -16 to 90	Dark Grey/Green	
DTO3-u-12-32T-FG-GR	3200	200	200	62	32	+6/-6	Du-12	12	22	12	0.9	20	From -16 to 90	Dark Grey/Green	
DTO4-u-12-32T-FG-GR	4000	200	250	82	32	+9/-9	Du-12	12	27	14	0.9	20	From -16 to 90	Dark Grey/Green	
DTO5-u-12-42T-FG-GR	6400	250	320	87	42	+9/-9	Du-12	12	32	18	0.9	20	From -16 to 90	Dark Grey/Green	
DTO6-u-12-42T-FG-GR	9600	300	400	87	42	+10/-10	Du-12	12	32	18	0.9	20	From -16 to 90	Dark Grey/Green	
DTO7-u-12-42T-FG-GR	16000	400	500	92	42	+10/-10	Du-12	12	39	22	0.9	20	From -16 to 90	Dark Grey/Green	



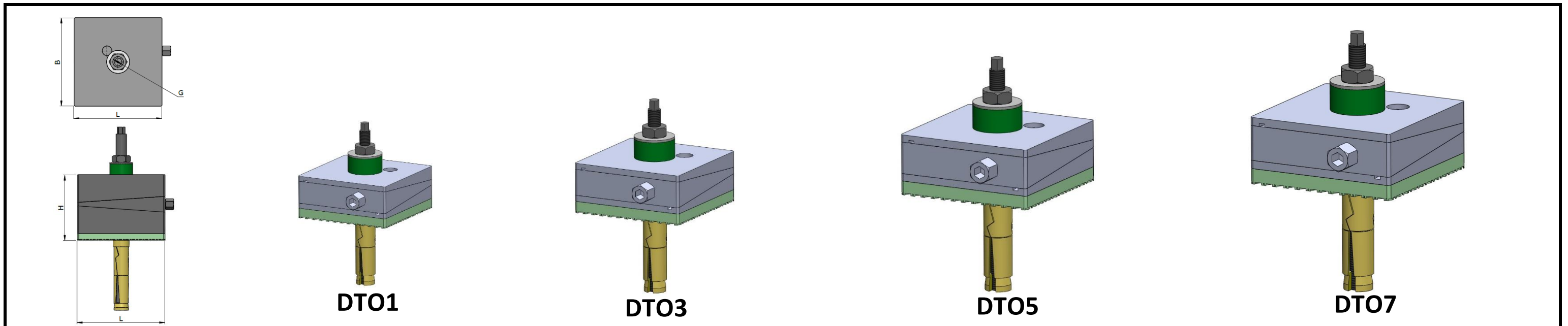
Model	Load Capacity Kg/pc	Length (L) mm	Width (B) mm	Height (H) at mean position (mm)	BORE* Ø(mm) G	Adjustment Range (mm)	Bottom pad Type	Bottom pad Thickness (mm)	SW1 (mm)	SW2 (mm)	Coeff. of Friction against Concrete	Natural Frequency at Max. Load (Hz)	Temperature Range (°C)	Color	Applications
DTO1-m-26T-FG-GR	1400	115	115	59	26	+4/-4	Dm	15	19	10	0.7	30	From -16 to 90	Dark Grey/Green	Applications: Power Presses, Stamping Machines, Shearing Machines, Punching Machines. For machines with high vertical impact.
DTO2-m-26T-FG-GR	2200	150	150	65	26	+5/-5	Dm	15	22	12	0.7	30	From -16 to 90	Dark Grey/Green	
DTO3-m-32T-FG-GR	4000	200	200	65	32	+6/-6	Dm	15	22	12	0.7	30	From -16 to 90	Dark Grey/Green	
DTO4-m-32T-FG-GR	5000	200	250	85	32	+9/-9	Dm	15	27	14	0.7	30	From -16 to 90	Dark Grey/Green	
DTO5-m-42T-FG-GR	8000	250	320	90	42	+9/-9	Dm	15	32	18	0.7	30	From -16 to 90	Dark Grey/Green	
DTO6-m-42T-FG-GR	12000	300	400	90	42	+10/-10	Dm	15	32	18	0.7	30	From -16 to 90	Dark Grey/Green	
DTO7-m-42T-FG-GR	20000	400	500	95	42	+10/-10	Dm	15	39	22	0.7	30	From -16 to 90	Dark Grey/Green	



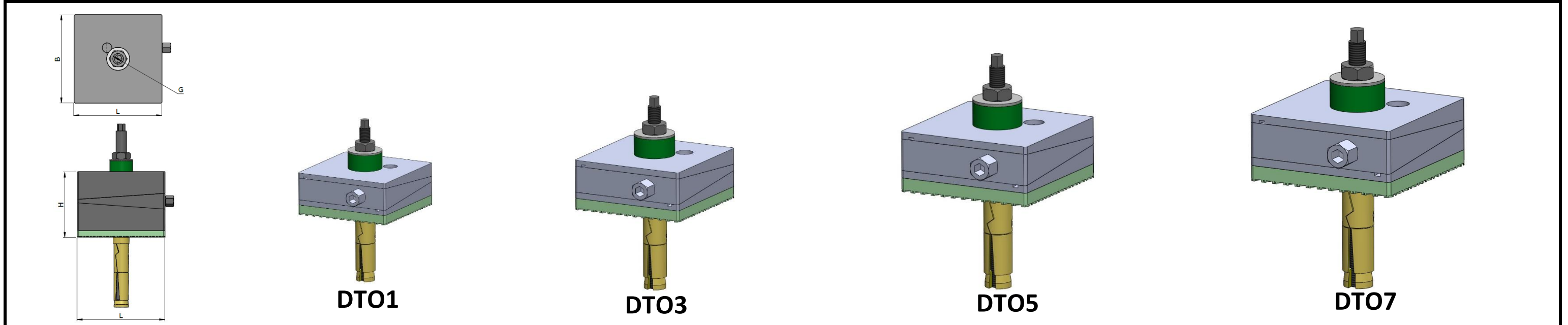
Model	Load Capacity Kg/pc	Length (L) mm	Width (B) mm	Height (H) at mean position (mm)	BORE* Ø(mm) G	Adjustment Range (mm)	Bottom pad Type	Bottom pad Thickness (mm)	SW1 (mm)	SW2 (mm)	Coeff. of Friction against Concrete	Natural Frequency at Max. Load (Hz)	Temperature Range (°C)	Color	Applications
DTO1-i-26T-FG-GR	1800	115	115	69	26	+4/-4	Di	25	19	10	0.8	7	From -16 to 90	Dark Grey/Green	Applications: Power Presses, Stamping Machines, Shearing Machines, Punching Machines. For machines with high vertical impact.
DTO2-i-26T-FG-GR	2900	150	150	75	26	+5/-5	Di	25	22	12	0.8	7	From -16 to 90	Dark Grey/Green	
DTO3-i-32T-FG-GR	5200	200	200	75	32	+6/-6	Di	25	22	12	0.8	7	From -16 to 90	Dark Grey/Green	
DTO4-i-32T-FG-GR	6500	200	250	95	32	+9/-9	Di	25	27	14	0.8	7	From -16 to 90	Dark Grey/Green	
DTO5-i-42T-FG-GR	10000	250	320	100	42	+9/-9	Di	25	32	18	0.8	7	From -16 to 90	Dark Grey/Green	
DTO6-i-42T-FG-GR	15000	300	400	100	42	+10/-10	Di	25	32	18	0.8	7	From -16 to 90	Dark Grey/Green	
DTO7-i-42T-FG-GR	26000	400	500	105	42	+10/-10	Di	25	39	22	0.8	7	From -16 to 90	Dark Grey/Green	



Model	Load Capacity Kg/pc	Length (L) mm	Width (B) mm	Height (H) at mean position (mm)	BORE* Ø(mm) G	Adjustment Range (mm)	Bottom pad Type	Bottom pad Thickness (mm)	SW1 (mm)	SW2 (mm)	Coeff. of Friction against Concrete	Natural Frequency at Max. Load (Hz)	Temperature Range (°C)	Color	Applications
DTO1-p1-26T-FG-GR	530	115	115	59	26	+4/-4	Dp1	15	19	10	0.8	7	From -16 to 90	Dark Grey/Green	Applications: Power Presses, Stamping Machines, Shearing Machines, Punching Machines. For machines with high vertical impact.
DTO2-p1-26T-FG-GR	900	150	150	65	26	+5/-5	Dp1	15	22	12	0.8	7	From -16 to 90	Dark Grey/Green	
DTO3-p1-32T-FG-GR	1600	200	200	65	32	+6/-6	Dp1	15	22	12	0.8	7	From -16 to 90	Dark Grey/Green	
DTO4-p1-32T-FG-GR	2000	200	250	85	32	+9/-9	Dp1	15	27	14	0.8	7	From -16 to 90	Dark Grey/Green	
DTO5-p1-42T-FG-GR	3200	250	320	90	42	+9/-9	Dp1	15	32	18	0.8	7	From -16 to 90	Dark Grey/Green	
DTO6-p1-42T-FG-GR	4800	300	400	90	42	+10/-10	Dp1	15	32	18	0.8	7	From -16 to 90	Dark Grey/Green	
DTO7-p1-42T-FG-GR	8000	400	500	95	42	+10/-10	Dp1	15	39	22	0.8	7	From -16 to 90	Dark Grey/Green	
DTO1-p2-26T-FG-GR	660	115	115	64	26	+4/-4	Dp2	20	19	10	0.8	12	From -16 to 90	Dark Grey/Green	Applications: Medium Presses, Punching Presses, Centreless Grinding Machines, Gear Shapers, High Speed Machines on upper floors.
DTO2-p2-26T-FG-GR	1130	150	150	70	26	+5/-5	Dp2	20	22	12	0.8	12	From -16 to 90	Dark Grey/Green	
DTO3-p2-32T-FG-GR	2000	200	200	70	32	+6/-6	Dp2	20	22	12	0.8	12	From -16 to 90	Dark Grey/Green	
DTO4-p2-32T-FG-GR	2500	200	250	90	32	+9/-9	Dp2	20	27	14	0.8	12	From -16 to 90	Dark Grey/Green	
DTO5-p2-42T-FG-GR	4000	250	320	95	42	+9/-9	Dp2	20	32	18	0.8	12	From -16 to 90	Dark Grey/Green	
DTO6-p2-42T-FG-GR	6000	300	400	95	42	+10/-10	Dp2	20	32	18	0.8	12	From -16 to 90	Dark Grey/Green	
DTO7-p2-42T-FG-GR	10000	400	500	100	42	+10/-10	Dp2	20	39	22	0.8	12	From -16 to 90	Dark Grey/Green	
DTO1-p3-26T-FG-GR	790	115	115	68	26	+4/-4	Dp3	24	19	10	0.8	7	From -16 to 90	Dark Grey/Green	Applications: Tool Room Machines on suspended Floors, Light Weight Presses, Compressors etc.
DTO2-p3-26T-FG-GR	1350	150	150	74	26	+5/-5	Dp3	24	22	12	0.8	7	From -16 to 90	Dark Grey/Green	
DTO3-p3-32T-FG-GR	2400	200	200	74	32	+6/-6	Dp3	24	22	12	0.8	7	From -16 to 90	Dark Grey/Green	
DTO4-p3-32T-FG-GR	3000	200	250	94	32	+9/-9	Dp3	24	27	14	0.8	7	From -16 to 90	Dark Grey/Green	
DTO5-p3-42T-FG-GR	4800	250	320	99	42	+9/-9	Dp3	24	32	18	0.8	7	From -16 to 90	Dark Grey/Green	
DTO6-p3-42T-FG-GR	7200	300	400	99	42	+10/-10	Dp3	24	32	18	0.8	7	From -16 to 90	Dark Grey/Green	
DTO7-p3-42T-FG-GR	12000	400	500	104	42	+10/-10	Dp3	24	39	22	0.8	7	From -16 to 90	Dark Grey/Green	

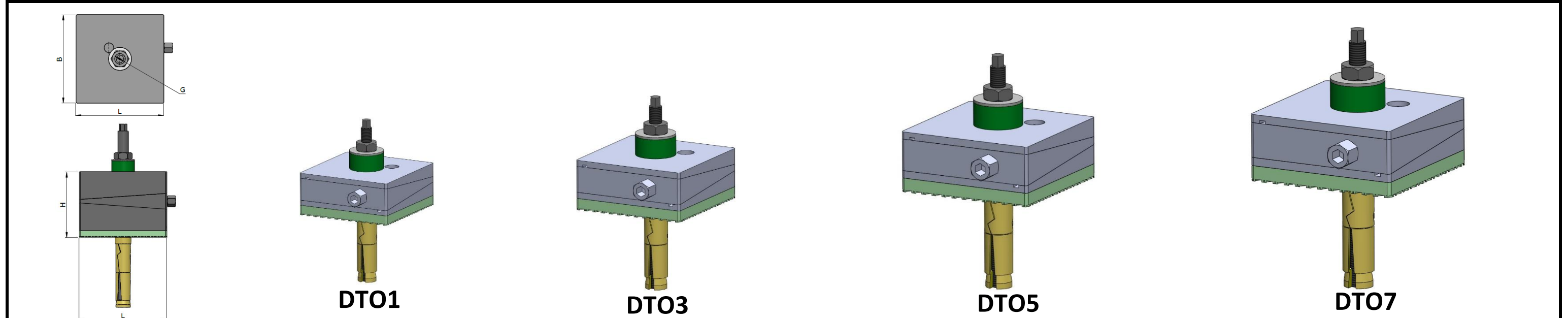


Model	Load Capacity Kg/pc	Length (L) mm	Width (B) mm	Height (H) at mean position (mm)	BORE* Ø(mm) G	Adjustment Range (mm)	Bottom pad Type	Bottom pad Thickness (mm)	SW1 (mm)	SW2 (mm)	Coeff. of Friction against Concrete	Natural Frequency at Max. Load (Hz)	Temperature Range (°C)	Color	Applications
DT01-s1-26T-FG-GR	660	115	115	64	26	+4/-4	Ds1	20	19	10	0.8	15	From -16 to 90	Dark Grey/Green	Applications: Tool Room Machines, Plastic Injection Moulding Machines, Pressure Die Casting Machines, Shaper, Printing and Textile Machines etc.
DT02-s1-26T-FG-GR	1130	150	150	70	26	+5/-5	Ds1	20	22	12	0.8	15	From -16 to 90	Dark Grey/Green	
DT03-s1-32T-FG-GR	2000	200	200	70	32	+6/-6	Ds1	20	22	12	0.8	15	From -16 to 90	Dark Grey/Green	
DT04-s1-32T-FG-GR	2500	200	250	90	32	+9/-9	Ds1	20	27	14	0.8	15	From -16 to 90	Dark Grey/Green	
DT05-s1-42T-FG-GR	4000	250	320	95	42	+9/-9	Ds1	20	32	18	0.8	15	From -16 to 90	Dark Grey/Green	
DT06-s1-42T-FG-GR	6000	300	400	95	42	+10/-10	Ds1	20	32	18	0.8	15	From -16 to 90	Dark Grey/Green	
DT07-s1-42T-FG-GR	10000	400	500	100	42	+10/-10	Ds1	20	39	22	0.8	15	From -16 to 90	Dark Grey/Green	
DT01-s2-26T-FG-GR	950	115	115	69	26	+4/-4	Ds2	25	19	10	0.8	8	From -16 to 90	Dark Grey/Green	Applications: Power Presses, Stamping Machines, Shearing Machines, Punching Machines. For machines with high vertical impact.
DT02-s2-26T-FG-GR	1600	150	150	75	26	+5/-5	Ds2	25	22	12	0.8	8	From -16 to 90	Dark Grey/Green	
DT03-s2-32T-FG-GR	2800	200	200	75	32	+6/-6	Ds2	25	22	12	0.8	8	From -16 to 90	Dark Grey/Green	
DT04-s2-32T-FG-GR	3500	200	250	95	32	+9/-9	Ds2	25	27	14	0.8	8	From -16 to 90	Dark Grey/Green	
DT05-s2-42T-FG-GR	5500	250	320	100	42	+9/-9	Ds2	25	32	18	0.8	8	From -16 to 90	Dark Grey/Green	
DT06-s2-42T-FG-GR	8500	300	400	100	42	+10/-10	Ds2	25	32	18	0.8	8	From -16 to 90	Dark Grey/Green	
DT07-s2-42T-FG-GR	14000	400	500	105	42	+10/-10	Ds2	25	39	22	0.8	8	From -16 to 90	Dark Grey/Green	



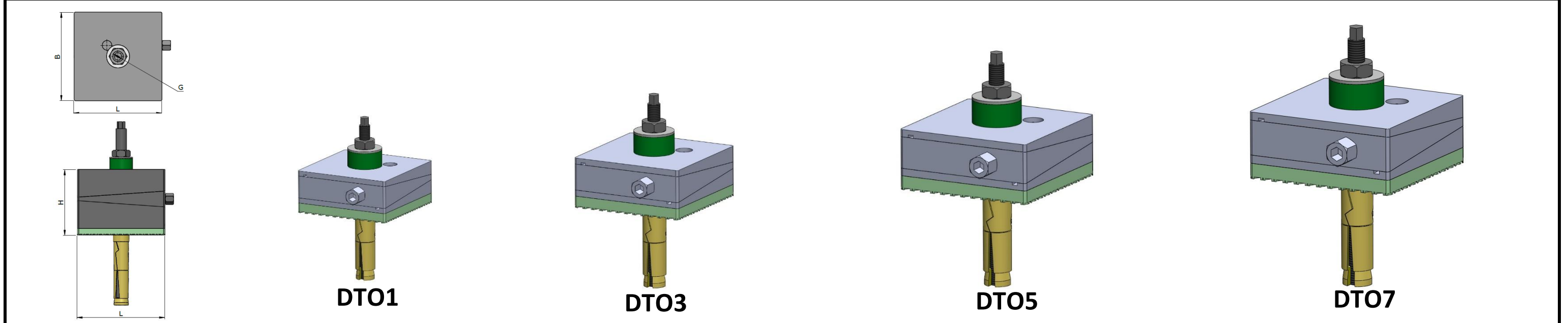
Model	Load Capacity Kg/pc	Length (L) mm	Width (B) mm	Height (H) at mean position (mm)	BORE* Ø(mm) G	Adjustment Range (mm)	Bottom pad Type	Bottom pad Thickness (mm)	SW1 (mm)	SW2 (mm)	Coeff. of Friction against Concrete	Natural Frequency at Max. Load (Hz)	Temperature Range (°C)	Color	Applications
-------	---------------------	---------------	--------------	----------------------------------	---------------	-----------------------	-----------------	---------------------------	----------	----------	-------------------------------------	-------------------------------------	------------------------	-------	--------------

DT01-hs1-26T-FG-GR	2650	115	115	109	26	+4/-4	Dhs1	65	19	10	0.8	6	From -16 to 90	Dark Grey/Green	Applications : Forging Hammers, Heavy Gen Sets, Heavy Industrial machines, Test Rigs, Heavy presses etc.
DT02-hs1-26T-FG-GR	4500	150	150	115	26	+5/-5	Dhs1	65	22	12	0.8	6	From -16 to 90	Dark Grey/Green	
DT03-hs1-32T-FG-GR	8000	200	200	115	32	+6/-6	Dhs1	65	22	12	0.8	6	From -16 to 90	Dark Grey/Green	
DT04-hs1-32T-FG-GR	14000	200	250	135	32	+9/-9	Dhs1	65	27	14	0.8	6	From -16 to 90	Dark Grey/Green	
DT05-hs1-42T-FG-GR	16000	250	320	140	42	+9/-9	Dhs1	65	32	18	0.8	6	From -16 to 90	Dark Grey/Green	
DT06-hs1-42T-FG-GR	24000	300	400	140	42	+10/-10	Dhs1	65	32	18	0.8	6	From -16 to 90	Dark Grey/Green	
DT07-hs1-42T-FG-GR	40000	400	500	145	42	+10/-10	Dhs1	65	39	22	0.8	6	From -16 to 90	Dark Grey/Green	
DT01-hs2-26T-FG-GR	1060	115	115	109	26	+4/-4	Dhs2	65	19	10	0.8	4	From -16 to 90	Dark Grey/Green	Applications : Forging Hammers, Heavy Gen Sets, Heavy Industrial machines, Test Rigs, Heavy presses, crushers etc.
DT02-hs2-26T-FG-GR	1800	150	150	115	26	+5/-5	Dhs2	65	22	12	0.8	4	From -16 to 90	Dark Grey/Green	
DT03-hs2-32T-FG-GR	3200	200	200	115	32	+6/-6	Dhs2	65	22	12	0.8	4	From -16 to 90	Dark Grey/Green	
DT04-hs2-32T-FG-GR	4000	200	250	135	32	+9/-9	Dhs2	65	27	14	0.8	4	From -16 to 90	Dark Grey/Green	
DT05-hs2-42T-FG-GR	6400	250	320	140	42	+9/-9	Dhs2	65	32	18	0.8	4	From -16 to 90	Dark Grey/Green	
DT06-hs2-42T-FG-GR	9600	300	400	140	42	+10/-10	Dhs2	65	32	18	0.8	4	From -16 to 90	Dark Grey/Green	
DT07-hs2-42T-FG-GR	16000	400	500	145	42	+10/-10	Dhs2	65	39	22	0.8	4	From -16 to 90	Dark Grey/Green	
DT01-hs3-26T-FG-GR	3700	115	115	94	26	+4/-4	Dhs3	50	19	10	0.8	7	From -16 to 90	Dark Grey/Green	Applications : Forging Hammers, Heavy Gen Sets, Heavy Industrial machines, Test Rigs, Heavy presses etc.
DT02-hs3-26T-FG-GR	6300	150	150	100	26	+5/-5	Dhs3	50	22	12	0.8	7	From -16 to 90	Dark Grey/Green	
DT03-hs3-32T-FG-GR	11200	200	200	100	32	+6/-6	Dhs3	50	22	12	0.8	7	From -16 to 90	Dark Grey/Green	
DT04-hs3-32T-FG-GR	14000	200	250	120	32	+9/-9	Dhs3	50	27	14	0.8	7	From -16 to 90	Dark Grey/Green	
DT05-hs3-42T-FG-GR	22400	250	320	125	42	+9/-9	Dhs3	50	32	18	0.8	7	From -16 to 90	Dark Grey/Green	
DT06-hs3-42T-FG-GR	33600	300	400	125	42	+10/-10	Dhs3	50	32	18	0.8	7	From -16 to 90	Dark Grey/Green	
DT07-hs3-42T-FG-GR	56000	400	500	130	42	+10/-10	Dhs3	50	39	22	0.8	7	From -16 to 90	Dark Grey/Green	
DT01-hs4-26T-FG-GR	1590	115	115	94	26	+4/-4	Dhs4	50	19	10	0.8	5	From -16 to 90	Dark Grey/Green	Applications : Forging Hammers, Heavy Gen Sets, Heavy Industrial machines, Test Rigs, Heavy presses, crushers etc.
DT02-hs4-26T-FG-GR	2700	150	150	100	26	+5/-5	Dhs4	50	22	12	0.8	5	From -16 to 90	Dark Grey/Green	
DT03-hs4-32T-FG-GR	4800	200	200	100	32	+6/-6	Dhs4	50	22	12	0.8	5	From -16 to 90	Dark Grey/Green	
DT04-hs4-32T-FG-GR	6000	200	250	120	32	+9/-9	Dhs4	50	27	14	0.8	5	From -16 to 90	Dark Grey/Green	
DT05-hs4-42T-FG-GR	9600	250	320	125	42	+9/-9	Dhs4	50	32	18	0.8	5	From -16 to 90	Dark Grey/Green	
DT06-hs4-42T-FG-GR	14000	300	400	125	42	+10/-10	Dhs4	50	32	18	0.8	5	From -16 to 90	Dark Grey/Green	
DT07-hs4-42T-FG-GR	24000	400	500	130	42	+10/-10	Dhs4	50	39	22	0.8	5	From -16 to 90	Dark Grey/Green	
DT01-hs5-26T-FG-GR	3700	115	115	124	26	+4/-4	Dhs5	80	19	10	0.8	5	From -16 to 90	Dark Grey/Green	Applications : Forging Hammers, Heavy Gen Sets, Heavy Industrial machines, Test Rigs, Heavy presses etc.
DT02-hs5-26T-FG-GR	6300	150	150	130	26	+5/-5	Dhs5	80	22	12	0.8	5	From -16 to 90	Dark Grey/Green	
DT03-hs5-32T-FG-GR	11200	200	200	130	32	+6/-6	Dhs5	80	22	12	0.8	5	From -16 to 90	Dark Grey/Green	
DT04-hs5-32T-FG-GR	14000	200	250	150	32	+9/-9	Dhs5	80	27	14	0.8	5	From -16 to 90	Dark Grey/Green	
DT05-hs5-42T-FG-GR	22400	250	320	155	42	+9/-9	Dhs5	80	32	18	0.8	5	From -16 to 90	Dark Grey/Green	
DT06-hs5-42T-FG-GR	33600	300	400	155	42	+10/-10	Dhs5	80	32	18	0.8	5	From -16 to 90	Dark Grey/Green	
DT07-hs5-42T-FG-GR	56000	400	500	160	42	+10/-10	Dhs5	80	39	22	0.8	5	From -16 to 90	Dark Grey/Green	

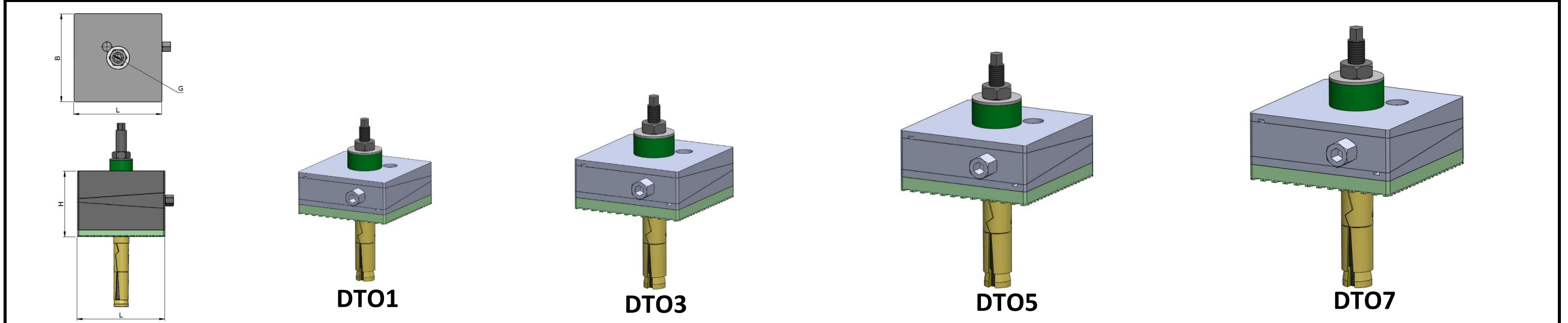


Model	Load Capacity Kg/pc	Length (L) mm	Width (B) mm	Height (H) at mean position (mm)	BORE* Ø(mm) G	Adjustment Range (mm)	Bottom pad Type	Bottom pad Thickness (mm)	SW1 (mm)	SW2 (mm)	Coeff. of Friction against Concrete	Natural Frequency at Max. Load (Hz)	Temperature Range (°C)	Color	Applications
DT01-h-26T-FG-GR	3970	115	115	59	26	+4/-4	Dh	15	19	10	0.6	45	From -16 to 90	Dark Grey/Green	

DT02-h-26T-FG-GR	6750	150	150	65	26	+5/-5	Dh	15	22	12	0.6	45	From -16 to 90	Dark Grey/Green	Applications : Very Heavy and long bed machines, long machining centres, planners etc.
DT03-h-32T-FG-GR	12000	200	200	65	32	+6/-6	Dh	15	22	12	0.6	45	From -16 to 90	Dark Grey/Green	
DT04-h-32T-FG-GR	15000	200	250	85	32	+9/-9	Dh	15	27	14	0.6	45	From -16 to 90	Dark Grey/Green	
DT05-h-42T-FG-GR	24000	250	320	90	42	+9/-9	Dh	15	32	18	0.6	45	From -16 to 90	Dark Grey/Green	
DT06-h-42T-FG-GR	36000	300	400	90	42	+10/-10	Dh	15	32	18	0.6	45	From -16 to 90	Dark Grey/Green	
DT07-h-42T-FG-GR	60000	400	500	95	42	+10/-10	Dh	15	39	22	0.6	45	From -16 to 90	Dark Grey/Green	

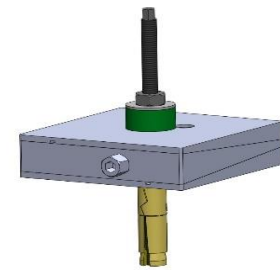
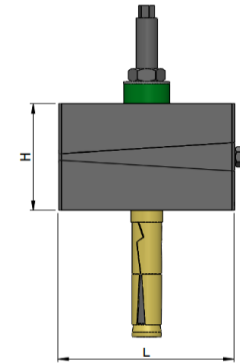
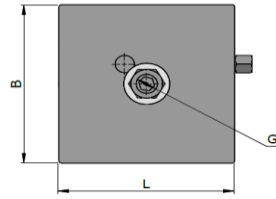


Model	Load Capacity Kg/pc	Length (L) mm	Width (B) mm	Height (H) at mean position (mm)	BORE* Ø(mm) G	Adjustment Range (mm)	Bottom pad Type	Bottom pad Thickness (mm)	SW1 (mm)	SW2 (mm)	Coeff. of Friction against Concrete	Natural Frequency at Max. Load (Hz)	Temperature Range (°C)	Color	Applications
DT01-a1-26T-FG-GR	2380	115	115	46	26	+4/-4	Da1	2	19	10	0.8	70	From -16 to 90	Dark Grey/Green	
DT02-a1-26T-FG-GR	4050	150	150	52	26	+5/-5	Da1	2	22	12	0.8	70	From -16 to 90	Dark Grey/Green	
DT03-a1-32T-FG-GR	7200	200	200	52	32	+6/-6	Da1	2	22	12	0.8	70	From -16 to 90	Dark Grey/Green	
DT04-a1-32T-FG-GR	9000	200	250	72	32	+9/-9	Da1	2	27	14	0.8	70	From -16 to 90	Dark Grey/Green	
DT05-a1-42T-FG-GR	14400	250	320	77	42	+9/-9	Da1	2	32	18	0.8	70	From -16 to 90	Dark Grey/Green	
DT06-a1-42T-FG-GR	21600	300	400	77	42	+10/-10	Da1	2	32	18	0.8	70	From -16 to 90	Dark Grey/Green	
DT07-a1-42T-FG-GR	36000	400	500	82	42	+10/-10	Da1	2	39	22	0.8	70	From -16 to 90	Dark Grey/Green	

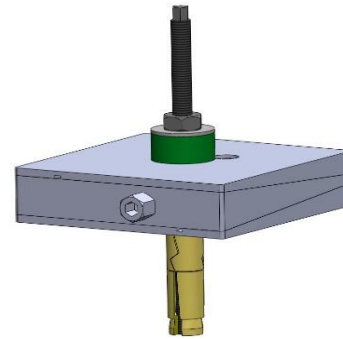


Model	Load Capacity Kg/pc	Length (L) mm	Width (B) mm	Height (H) at mean position (mm)	BORE* Ø(mm) G	Adjustment Range (mm)	Bottom pad Type	Bottom pad Thickness (mm)	SW1 (mm)	SW2 (mm)	Coeff. of Friction against Concrete	Natural Frequency at Max. Load (Hz)	Temperature Range (°C)	Color	Applications
DT01-a2-26T-FG-GR	1320	115	115	52	26	+4/-4	Da2	8	19	10	0.9	45	From -16 to 90	Dark Grey/Green	

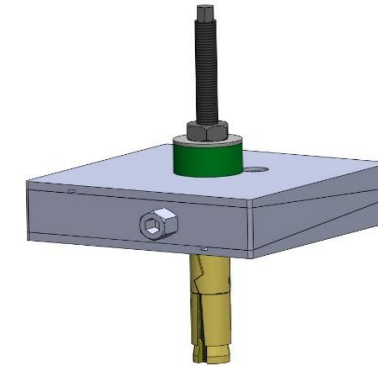
DT02-a2-26T-FG-GR	2250	150	150	58	26	+5/-5	Da2	8	22	12	0.9	45	From -16 to 90	Dark Grey/Green
DT03-a2-32T-FG-GR	4000	200	200	58	32	+6/-6	Da2	8	22	12	0.9	45	From -16 to 90	Dark Grey/Green
DT04-a2-32T-FG-GR	6500	200	250	78	32	+9/-9	Da2	8	27	14	0.9	45	From -16 to 90	Dark Grey/Green
DT05-a2-42T-FG-GR	8000	250	320	83	42	+9/-9	Da2	8	32	18	0.9	45	From -16 to 90	Dark Grey/Green
DT06-a2-42T-FG-GR	12000	300	400	83	42	+10/-10	Da2	8	32	18	0.9	45	From -16 to 90	Dark Grey/Green
DT07-a2-42T-FG-GR	20000	400	500	88	42	+10/-10	Da2	8	39	22	0.9	45	From -16 to 90	Dark Grey/Green



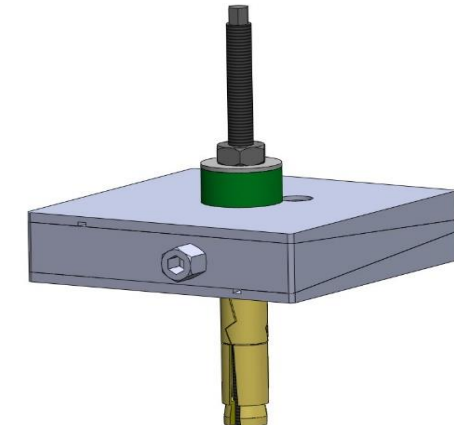
DT01



DT03



DT05



DT07

Model	Load Capacity Kg/pc	Length (L) mm	Width (B) mm	Height (H) at mean position (mm)	BORE* Ø(mm) G	Adjustment Range (mm)	Bottom pad Type	Bottom pad Thickness (mm)	SW1 (mm)	SW2 (mm)	Coeff. of Friction against Concrete	Natural Frequency at Max. Load (Hz)	Temperature Range (°C)	Color	Applications
DT01-26T-FG-GR	3600	115	115	44	26	+4/-4	X	X	19	10	X	X	From -16 to 90	Dark Grey/Green	Applications : For levelling of all Precicion Machines.
DT02-26T-FG-GR	3800	150	150	50	26	+5/-5	X	X	22	12	X	X	From -16 to 90	Dark Grey/Green	
DT03-32T-FG-GR	10400	200	200	50	32	+6/-6	X	X	22	12	X	X	From -16 to 90	Dark Grey/Green	
DT04-32T-FG-GR	13000	200	250	70	32	+9/-9	X	X	27	14	X	X	From -16 to 90	Dark Grey/Green	
DT05-42T-FG-GR	20000	250	320	75	42	+9/-9	X	X	32	18	X	X	From -16 to 90	Dark Grey/Green	
DT06-42T-FG-GR	30000	300	400	75	42	+10/-10	X	X	32	18	X	X	From -16 to 90	Dark Grey/Green	
DT07-42T-FG-GR	40000	400	500	80	42	+10/-10	X	X	39	22	X	X	From -16 to 90	Dark Grey/Green	