

DT0



DT2



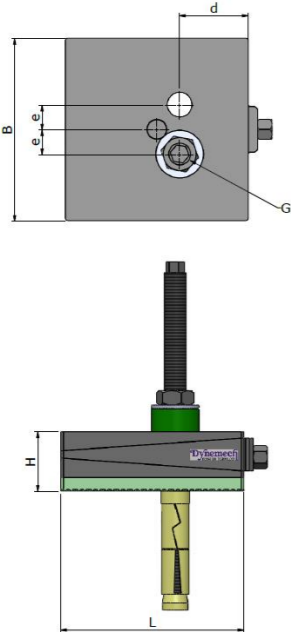
DT4



DT6

Dynemech Wedge mounts, Series DT are designed for machine tools that are top heavy or have eccentric motion or for machines which must be anchored to the ground require precision levelling, vibration reduction, and/or need to be firmly mounted with the isolator.

Model	Load Capacity Kg/pc	Length (L) mm	Width (B) mm	Height (H) at mean position (mm)	d (mm)	e (mm)	Bore G (mm)	Adjustment Range (mm)	Bottom pad Type	Bottom pad Thickness (mm)	SW1 (mm)	SW2 (mm)	Coeff. of Friction against Concrete	Natural Frequency at Max. Load (Hz)	Temperature Range (°C)	Color	Applications
DT0-u-18T-FG-DG/GR	900	100	100	53	42	23	18	+3/-3	Du	15	19	10	0.9	18	From -16 to 90	Dark Grey/Green	Applications: Tool Room Machines, Plastic Injection Moulding Machines, Pressure Die Casting Machines, Shaper, Printing and Textile Machines etc.
DT1-u-22T-FG-DG/GR	1100	115	115	59	50	24	22	+4/-4	Du	15	19	10	0.9	18	From -16 to 90	Dark Grey/Green	
DT2-u-22T-FG-DG/GR	1800	150	150	65	60	23	22	+5/-5	Du	15	22	12	0.9	18	From -16 to 90	Dark Grey/Green	
DT3-u-28T-FG-DG/GR	3200	200	200	65	75	27	28	+6/-6	Du	15	22	12	0.9	18	From -16 to 90	Dark Grey/Green	
DT4-u-28T-FG-DG/GR	4000	200	250	85	95	27	28	+9/-9	Du	15	27	14	0.9	18	From -16 to 90	Dark Grey/Green	
DT5-u-28T-FG-DG/GR	6400	250	320	90	125	55	28	+9/-9	Du	15	32	18	0.9	18	From -16 to 90	Dark Grey/Green	
DT6-u-30T-FG-DG/GR	9600	300	400	90	148	50	30	+10/-10	Du	15	32	18	0.9	18	From -16 to 90	Dark Grey/Green	
DT7-u-32T-FG-DG/GR	16000	400	500	95	200	70	32	+10/-10	Du	15	39	22	0.9	18	From -16 to 90	Dark Grey/Green	
DT0-u-10-18T-FG-DG/GR	900	100	100	48	42	23	18	+3/-3	Du-10	10	19	10	0.9	25	From -16 to 90	Dark Grey/Green	Applications: Tool Room Machines, Plastic Injection Moulding Machines, Pressure Die Casting Machines, Shaper, Printing and Textile Machines etc.
DT1-u-10-22T-FG-DG/GR	1100	115	115	54	50	24	22	+4/-4	Du-10	10	19	10	0.9	25	From -16 to 90	Dark Grey/Green	
DT2-u-10-22T-FG-DG/GR	1800	150	150	60	60	23	22	+5/-5	Du-10	10	22	12	0.9	25	From -16 to 90	Dark Grey/Green	
DT3-u-10-28T-FG-DG/GR	3200	200	200	60	75	27	28	+6/-6	Du-10	10	22	12	0.9	25	From -16 to 90	Dark Grey/Green	
DT4-u-10-28T-FG-DG/GR	4000	200	250	80	95	27	28	+9/-9	Du-10	10	27	14	0.9	25	From -16 to 90	Dark Grey/Green	
DT5-u-10-28T-FG-DG/GR	6400	250	320	85	125	55	28	+9/-9	Du-10	10	32	18	0.9	25	From -16 to 90	Dark Grey/Green	
DT6-u-10-30T-FG-DG/GR	9600	300	400	85	148	50	30	+10/-10	Du-10	10	32	18	0.9	25	From -16 to 90	Dark Grey/Green	
DT7-u-10-32T-FG-DG/GR	16000	400	500	90	200	70	32	+10/-10	Du-10	10	39	22	0.9	25	From -16 to 90	Dark Grey/Green	
DT0-u-12-18T-FG-DG/GR	900	100	100	50	42	23	18	+3/-3	Du-12	12	19	10	0.9	20	From -16 to 90	Dark Grey/Green	Applications: Tool Room Machines, Plastic Injection Moulding Machines, Pressure Die Casting Machines, Shaper, Printing and Textile Machines etc.
DT1-u-12-22T-FG-DG/GR	1100	115	115	56	50	24	22	+4/-4	Du-12	12	19	10	0.9	20	From -16 to 90	Dark Grey/Green	
DT2-u-12-22T-FG-DG/GR	1800	150	150	62	60	23	22	+5/-5	Du-12	12	22	12	0.9	20	From -16 to 90	Dark Grey/Green	
DT3-u-12-28T-FG-DG/GR	3200	200	200	62	75	27	28	+6/-6	Du-12	12	22	12	0.9	20	From -16 to 90	Dark Grey/Green	
DT4-u-12-28T-FG-DG/GR	4000	200	250	82	95	27	28	+9/-9	Du-12	12	27	14	0.9	20	From -16 to 90	Dark Grey/Green	
DT5-u-12-28T-FG-DG/GR	6400	250	320	87	125	55	28	+9/-9	Du-12	12	32	18	0.9	20	From -16 to 90	Dark Grey/Green	
DT6-u-12-30T-FG-DG/GR	9600	300	400	87	148	50	30	+10/-10	Du-12	12	32	18	0.9	20	From -16 to 90	Dark Grey/Green	
DT7-u-12-32T-FG-DG/GR	16000	400	500	92	200	70	32	+10/-10	Du-12	12	39	22	0.9	20	From -16 to 90	Dark Grey/Green	



DT0



DT2

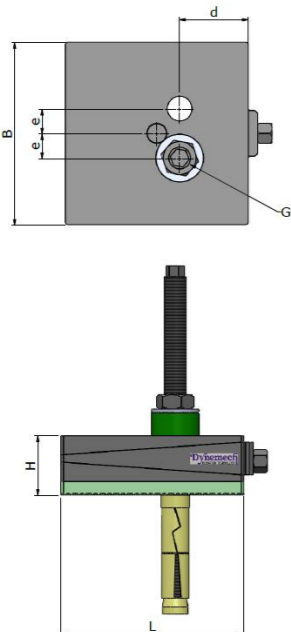


DT4



DT6

Model	Load Capacity Kg/pc	Length (L) mm	Width (B) mm	Height (H) at mean position (mm)	d (mm)	e (mm)	Bore G (mm)	Adjustment Range (mm)	Bottom pad Type	Bottom pad Thickness (mm)	SW1 (mm)	SW2 (mm)	Coeff. of Friction against Concrete	Natural Frequency at Max. Load (Hz)	Temperature Range (°C)	Color	Applications
DT0-m-18T-FG-DG/GR	1000	100	100	53	42	23	18	+3/-3	Dm	15	19	10	0.7	30	From -16 to 90	Dark Grey/Green	Applications: Power Presses, Stamping Machines, Shearing Machines, Punching Machines. For machines with high vertical impact.
DT1-m-22T-FG-DG/GR	1400	115	115	59	50	24	22	+4/-4	Dm	15	19	10	0.7	30	From -16 to 90	Dark Grey/Green	
DT2-m-22T-FG-DG/GR	2200	150	150	65	60	23	22	+5/-5	Dm	15	22	12	0.7	30	From -16 to 90	Dark Grey/Green	
DT3-m-28T-FG-DG/GR	4000	200	200	65	75	27	28	+6/-6	Dm	15	22	12	0.7	30	From -16 to 90	Dark Grey/Green	
DT4-m-28T-FG-DG/GR	5000	200	250	85	95	27	28	+9/-9	Dm	15	27	14	0.7	30	From -16 to 90	Dark Grey/Green	
DT5-m-28T-FG-DG/GR	8000	250	320	90	125	55	28	+9/-9	Dm	15	32	18	0.7	30	From -16 to 90	Dark Grey/Green	
DT6-m-30T-FG-DG/GR	12000	300	400	90	148	50	30	+10/-10	Dm	15	32	18	0.7	30	From -16 to 90	Dark Grey/Green	
DT7-m-32T-FG-DG/GR	20000	400	500	95	200	70	32	+10/-10	Dm	15	39	22	0.7	30	From -16 to 90	Dark Grey/Green	



DT0



DT2

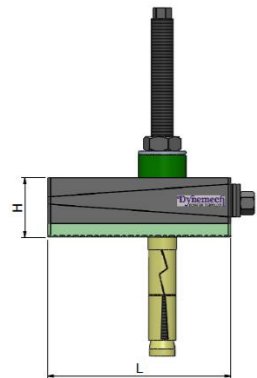
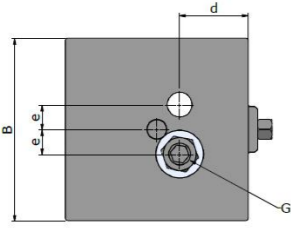


DT4



DT6

Model	Load Capacity Kg/pc	Length (L) mm	Width (B) mm	Height (H) at mean position (mm)	d (mm)	e (mm)	Bore G (mm)	Adjustment Range (mm)	Bottom pad Type	Bottom pad Thickness (mm)	SW1 (mm)	SW2 (mm)	Coeff. of Friction against Concrete	Natural Frequency at Max. Load (Hz)	Temperature Range (°C)	Color	Applications
DT0-i-18T-FG-DG/GR	1400	100	100	63	42	23	18	+3/-3	Di	25	19	10	0.8	7	From -16 to 90	Dark Grey/Green	Applications: Power Presses, Stamping Machines, Shearing Machines, Punching Machines. For machines with high vertical impact.
DT1-i-22T-FG-DG/GR	1800	115	115	69	50	24	22	+4/-4	Di	25	19	10	0.8	7	From -16 to 90	Dark Grey/Green	
DT2-i-22T-FG-DG/GR	2900	150	150	75	60	23	22	+5/-5	Di	25	22	12	0.8	7	From -16 to 90	Dark Grey/Green	
DT3-i-28T-FG-DG/GR	5200	200	200	75	75	27	28	+6/-6	Di	25	22	12	0.8	7	From -16 to 90	Dark Grey/Green	
DT4-i-28T-FG-DG/GR	6500	200	250	95	95	27	28	+9/-9	Di	25	27	14	0.8	7	From -16 to 90	Dark Grey/Green	
DT5-i-28T-FG-DG/GR	10000	250	320	100	125	55	28	+9/-9	Di	25	32	18	0.8	7	From -16 to 90	Dark Grey/Green	
DT6-i-30T-FG-DG/GR	15000	300	400	100	148	50	30	+10/-10	Di	25	32	18	0.8	7	From -16 to 90	Dark Grey/Green	
DT7-i-32T-FG-DG/GR	26000	400	500	105	200	70	32	+10/-10	Di	25	39	22	0.8	7	From -16 to 90	Dark Grey/Green	



DT0



DT2

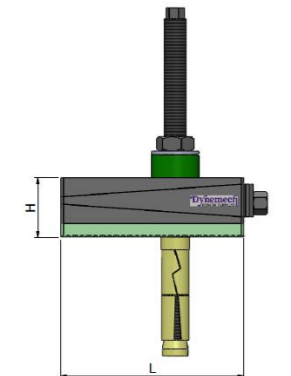
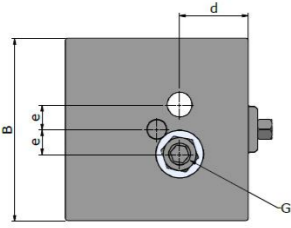


DT4



DT6

Model	Load Capacity Kg/pc	Length (L) mm	Width (B) mm	Height (H) at mean position (mm)	d (mm)	e (mm)	Bore G (mm)	Adjustment Range (mm)	Bottom pad Type	Bottom pad Thickness (mm)	SW1 (mm)	SW2 (mm)	Coeff. of Friction against Concrete	Natural Frequency at Max. Load (Hz)	Temperature Range (°C)	Color	Applications
DT0-p1-18T-FG-DG/GR	400	100	100	53	42	23	18	+3/-3	Dp1	15	19	10	0.8	7	From -16 to 90	Dark Grey/Green	Applications: Power Presses, Stamping Machines, Shearing Machines, Punching Machines. For machines with high vertical impact.
DT1-p1-22T-FG-DG/GR	530	115	115	59	50	24	22	+4/-4	Dp1	15	19	10	0.8	7	From -16 to 90	Dark Grey/Green	
DT2-p1-22T-FG-DG/GR	900	150	150	65	60	23	22	+5/-5	Dp1	15	22	12	0.8	7	From -16 to 90	Dark Grey/Green	
DT3-p1-28T-FG-DG/GR	1600	200	200	65	75	27	28	+6/-6	Dp1	15	22	12	0.8	7	From -16 to 90	Dark Grey/Green	
DT4-p1-28T-FG-DG/GR	2000	200	250	85	95	27	28	+9/-9	Dp1	15	27	14	0.8	7	From -16 to 90	Dark Grey/Green	
DT5-p1-28T-FG-DG/GR	3200	250	320	90	125	55	28	+9/-9	Dp1	15	32	18	0.8	7	From -16 to 90	Dark Grey/Green	
DT6-p1-30T-FG-DG/GR	4800	300	400	90	148	50	30	+10/-10	Dp1	15	32	18	0.8	7	From -16 to 90	Dark Grey/Green	
DT7-p1-32T-FG-DG/GR	8000	400	500	95	200	70	32	+10/-10	Dp1	15	39	22	0.8	7	From -16 to 90	Dark Grey/Green	
DT0-p2-18T-FG-DG/GR	500	100	100	58	42	23	18	+3/-3	Dp2	20	19	10	0.8	12	From -16 to 90	Dark Grey/Green	Applications: Medium Presses, Punching Presses, Centreless Grinding Machines, Gear Shapers, High Speed Machines on upper floors.
DT1-p2-22T-FG-DG/GR	660	115	115	64	50	24	22	+4/-4	Dp2	20	19	10	0.8	12	From -16 to 90	Dark Grey/Green	
DT2-p2-22T-FG-DG/GR	1120	150	150	70	60	23	22	+5/-5	Dp2	20	22	12	0.8	12	From -16 to 90	Dark Grey/Green	
DT3-p2-28T-FG-DG/GR	2000	200	200	70	75	27	28	+6/-6	Dp2	20	22	12	0.8	12	From -16 to 90	Dark Grey/Green	
DT4-p2-28T-FG-DG/GR	2500	200	250	90	95	27	28	+9/-9	Dp2	20	27	14	0.8	12	From -16 to 90	Dark Grey/Green	
DT5-p2-28T-FG-DG/GR	4000	250	320	95	125	55	28	+9/-9	Dp2	20	32	18	0.8	12	From -16 to 90	Dark Grey/Green	
DT6-p2-30T-FG-DG/GR	6000	300	400	95	148	50	30	+10/-10	Dp2	20	32	18	0.8	12	From -16 to 90	Dark Grey/Green	
DT7-p2-32T-FG-DG/GR	10000	400	500	100	200	70	32	+10/-10	Dp2	20	39	22	0.8	12	From -16 to 90	Dark Grey/Green	
DT0-p3-18T-FG-DG/GR	600	100	100	62	42	23	18	+3/-3	Dp3	24	19	10	0.8	7	From -16 to 90	Dark Grey/Green	Applications: Tool Room Machines on suspended Floors, Light Weight Presses, Compressors etc.
DT1-p3-22T-FG-DG/GR	790	115	115	68	50	24	22	+4/-4	Dp3	24	19	10	0.8	7	From -16 to 90	Dark Grey/Green	
DT2-p3-22T-FG-DG/GR	1350	150	150	74	60	23	22	+5/-5	Dp3	24	22	12	0.8	7	From -16 to 90	Dark Grey/Green	
DT3-p3-28T-FG-DG/GR	2400	200	200	74	75	27	28	+6/-6	Dp3	24	22	12	0.8	7	From -16 to 90	Dark Grey/Green	
DT4-p3-28T-FG-DG/GR	3000	200	250	94	95	27	28	+9/-9	Dp3	24	27	14	0.8	7	From -16 to 90	Dark Grey/Green	
DT5-p3-28T-FG-DG/GR	4800	250	320	99	125	55	28	+9/-9	Dp3	24	32	18	0.8	7	From -16 to 90	Dark Grey/Green	
DT6-p3-30T-FG-DG/GR	7200	300	400	99	148	50	30	+10/-10	Dp3	24	32	18	0.8	7	From -16 to 90	Dark Grey/Green	
DT7-p3-32T-FG-DG/GR	12000	400	500	104	200	70	32	+10/-10	Dp3	24	39	22	0.8	7	From -16 to 90	Dark Grey/Green	



DT0



DT2

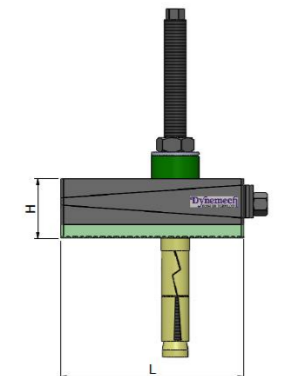
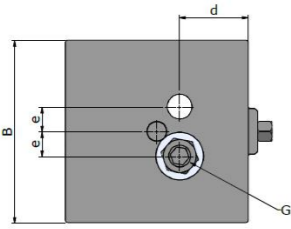


DT4



DT6

Model	Load Capacity Kg/pc	Length (L) mm	Width (B) mm	Height (H) at mean position (mm)	d (mm)	e (mm)	Bore G (mm)	Adjustment Range (mm)	Bottom pad Type	Bottom pad Thickness (mm)	SW1 (mm)	SW2 (mm)	Coeff. of Friction against Concrete	Natural Frequency at Max. Load (Hz)	Temperature Range (°C)	Color	Applications
DT0-s1-18T-FG-DG/GR	500	100	100	58	42	23	18	+3/-3	Ds1	20	19	10	0.8	15	From -16 to 90	Dark Grey/Green	Applications: Tool Room Machines, Plastic Injection Moulding Machines, Pressure Die Casting Machines, Shaper, Printing and Textile Machines etc.
DT1-s1-22T-FG-DG/GR	600	115	115	64	50	24	22	+4/-4	Ds1	20	19	10	0.8	15	From -16 to 90	Dark Grey/Green	
DT2-s1-22T-FG-DG/GR	1000	150	150	70	60	23	22	+5/-5	Ds1	20	22	12	0.8	15	From -16 to 90	Dark Grey/Green	
DT3-s1-28T-FG-DG/GR	1800	200	200	70	75	27	28	+6/-6	Ds1	20	22	12	0.8	15	From -16 to 90	Dark Grey/Green	
DT4-s1-28T-FG-DG/GR	2200	200	250	90	95	27	28	+9/-9	Ds1	20	27	14	0.8	15	From -16 to 90	Dark Grey/Green	
DT5-s1-28T-FG-DG/GR	3500	250	320	95	125	55	28	+9/-9	Ds1	20	32	18	0.8	15	From -16 to 90	Dark Grey/Green	
DT6-s1-30T-FG-DG/GR	5200	300	400	95	148	50	30	+10/-10	Ds1	20	32	18	0.8	15	From -16 to 90	Dark Grey/Green	
DT7-s1-32T-FG-DG/GR	9500	400	500	100	200	70	32	+10/-10	Ds1	20	39	22	0.8	15	From -16 to 90	Dark Grey/Green	
DT0-s2-18T-FG-DG/GR	800	100	100	63	42	23	18	+3/-3	Ds2	25	19	10	0.8	8	From -16 to 90	Dark Grey/Green	Applications: Power Presses, Stamping Machines, Shearing Machines, Punching Machines. For machines with high vertical impact.
DT1-s2-22T-FG-DG/GR	950	115	115	69	50	24	22	+4/-4	Ds2	25	19	10	0.8	8	From -16 to 90	Dark Grey/Green	
DT2-s2-22T-FG-DG/GR	1600	150	150	75	60	23	22	+5/-5	Ds2	25	22	12	0.8	8	From -16 to 90	Dark Grey/Green	
DT3-s2-28T-FG-DG/GR	2800	200	200	75	75	27	28	+6/-6	Ds2	25	22	12	0.8	8	From -16 to 90	Dark Grey/Green	
DT4-s2-28T-FG-DG/GR	3500	200	250	95	95	27	28	+9/-9	Ds2	25	27	14	0.8	8	From -16 to 90	Dark Grey/Green	
DT5-s2-28T-FG-DG/GR	5500	250	320	100	125	55	28	+9/-9	Ds2	25	32	18	0.8	8	From -16 to 90	Dark Grey/Green	
DT6-s2-30T-FG-DG/GR	8500	300	400	100	148	50	30	+10/-10	Ds2	25	32	18	0.8	8	From -16 to 90	Dark Grey/Green	
DT7-s2-32T-FG-DG/GR	14000	400	500	105	200	70	32	+10/-10	Ds2	25	39	22	0.8	8	From -16 to 90	Dark Grey/Green	



DT0



DT2



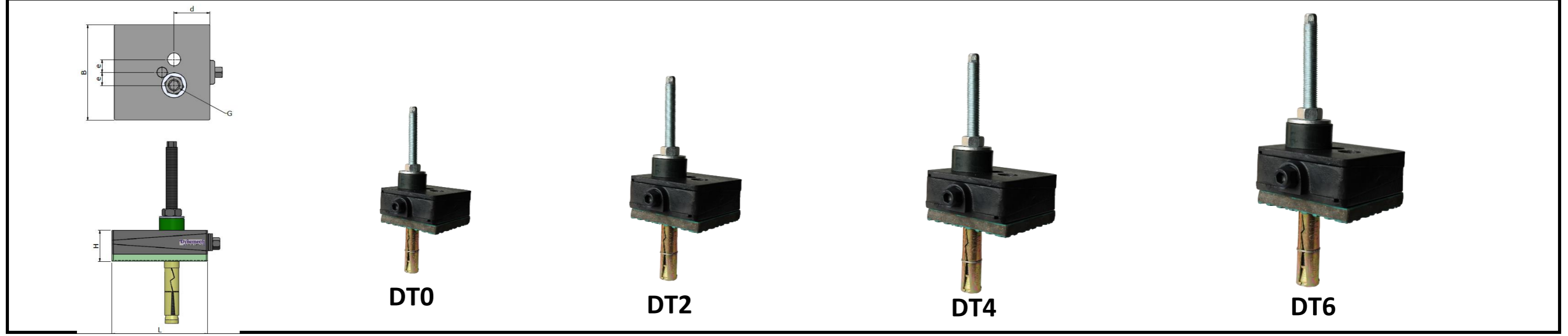
DT4



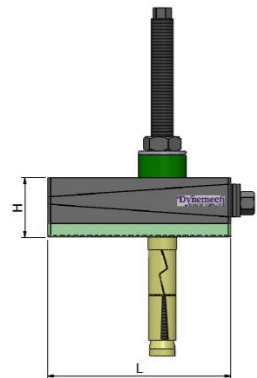
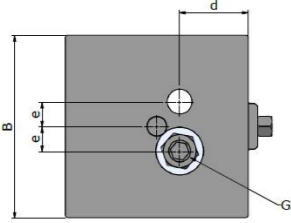
DT6

Model	Load Capacity Kg/pc	Length (L) mm	Width (B) mm	Height (H) at mean position (mm)	d (mm)	e (mm)	Bore G (mm)	Adjustment Range (mm)	Bottom pad Type	Bottom pad Thickness (mm)	SW1 (mm)	SW2 (mm)	Coeff. of Friction against Concrete	Natural Frequency at Max. Load (Hz)	Temperature Range (°C)	Color	Applications
-------	---------------------	---------------	--------------	----------------------------------	--------	--------	-------------	-----------------------	-----------------	---------------------------	----------	----------	-------------------------------------	-------------------------------------	------------------------	-------	--------------

DT0-hs1-18T-FG-DG/GR	2000	100	100	103	42	23	18	+3/-3	Dhs1	65	19	10	0.8	6	From -16 to 90	Dark Grey/Green	Applications : Forging Hammers, Heavy Gen Sets, Heavy Industrial machines, Test Rigs, Heavy presses etc.
DT1-hs1-22T-FG-DG/GR	2640	115	115	109	50	24	22	+4/-4	Dhs1	65	19	10	0.8	6	From -16 to 90	Dark Grey/Green	
DT2-hs1-22T-FG-DG/GR	4500	150	150	115	60	23	22	+5/-5	Dhs1	65	22	12	0.8	6	From -16 to 90	Dark Grey/Green	
DT3-hs1-28T-FG-DG/GR	8000	200	200	115	75	27	28	+6/-6	Dhs1	65	22	12	0.8	6	From -16 to 90	Dark Grey/Green	
DT4-hs1-28T-FG-DG/GR	10000	200	250	135	95	27	28	+9/-9	Dhs1	65	27	14	0.8	6	From -16 to 90	Dark Grey/Green	
DT5-hs1-28T-FG-DG/GR	16000	250	320	140	125	55	28	+9/-9	Dhs1	65	32	18	0.8	6	From -16 to 90	Dark Grey/Green	
DT6-hs1-30T-FG-DG/GR	24000	300	400	140	148	50	30	+10/-10	Dhs1	65	32	18	0.8	6	From -16 to 90	Dark Grey/Green	
DT7-hs1-32T-FG-DG/GR	40000	400	500	145	200	70	32	+10/-10	Dhs1	65	39	22	0.8	6	From -16 to 90	Dark Grey/Green	
DT0-hs2-18T-FG-DG/GR	800	100	100	103	42	23	18	+3/-3	Dhs2	65	19	10	0.8	4	From -16 to 90	Dark Grey/Green	Applications : Forging Hammers, Heavy Gen Sets, Heavy Industrial machines, Test Rigs, Heavy presses, crushers etc.
DT1-hs2-22T-FG-DG/GR	1060	115	115	109	50	24	22	+4/-4	Dhs2	65	19	10	0.8	4	From -16 to 90	Dark Grey/Green	
DT2-hs2-22T-FG-DG/GR	1800	150	150	115	60	23	22	+5/-5	Dhs2	65	22	12	0.8	4	From -16 to 90	Dark Grey/Green	
DT3-hs2-28T-FG-DG/GR	3200	200	200	115	75	27	28	+6/-6	Dhs2	65	22	12	0.8	4	From -16 to 90	Dark Grey/Green	
DT4-hs2-28T-FG-DG/GR	4000	200	250	135	95	27	28	+9/-9	Dhs2	65	27	14	0.8	4	From -16 to 90	Dark Grey/Green	
DT5-hs2-28T-FG-DG/GR	6400	250	320	140	125	55	28	+9/-9	Dhs2	65	32	18	0.8	4	From -16 to 90	Dark Grey/Green	
DT6-hs2-30T-FG-DG/GR	9600	300	400	140	148	50	30	+10/-10	Dhs2	65	32	18	0.8	4	From -16 to 90	Dark Grey/Green	
DT7-hs2-32T-FG-DG/GR	16000	400	500	145	200	70	32	+10/-10	Dhs2	65	39	22	0.8	4	From -16 to 90	Dark Grey/Green	
DT0-hs3-18T-FG-DG/GR	2800	100	100	88	42	23	18	+3/-3	Dhs3	50	19	10	0.8	7	From -16 to 90	Dark Grey/Green	Applications : Forging Hammers, Heavy Gen Sets, Heavy Industrial machines, Test Rigs, Heavy presses etc.
DT1-hs3-22T-FG-DG/GR	3700	115	115	94	50	24	22	+4/-4	Dhs3	50	19	10	0.8	7	From -16 to 90	Dark Grey/Green	
DT2-hs3-22T-FG-DG/GR	6300	150	150	100	60	23	22	+5/-5	Dhs3	50	22	12	0.8	7	From -16 to 90	Dark Grey/Green	
DT3-hs3-28T-FG-DG/GR	11200	200	200	100	75	27	28	+6/-6	Dhs3	50	22	12	0.8	7	From -16 to 90	Dark Grey/Green	
DT4-hs3-28T-FG-DG/GR	14000	200	250	120	95	27	28	+9/-9	Dhs3	50	27	14	0.8	7	From -16 to 90	Dark Grey/Green	
DT5-hs3-28T-FG-DG/GR	22400	250	320	125	125	55	28	+9/-9	Dhs3	50	32	18	0.8	7	From -16 to 90	Dark Grey/Green	
DT6-hs3-30T-FG-DG/GR	33600	300	400	125	148	50	30	+10/-10	Dhs3	50	32	18	0.8	7	From -16 to 90	Dark Grey/Green	
DT7-hs3-32T-FG-DG/GR	56000	400	500	130	200	70	32	+10/-10	Dhs3	50	39	22	0.8	7	From -16 to 90	Dark Grey/Green	
DT0-hs4-18T-FG-DG/GR	1200	100	100	88	42	23	18	+3/-3	Dhs4	50	19	10	0.8	5	From -16 to 90	Dark Grey/Green	Applications : Forging Hammers, Heavy Gen Sets, Heavy Industrial machines, Test Rigs, Heavy presses, crushers etc.
DT1-hs4-22T-FG-DG/GR	1580	115	115	94	50	24	22	+4/-4	Dhs4	50	19	10	0.8	5	From -16 to 90	Dark Grey/Green	
DT2-hs4-22T-FG-DG/GR	2700	150	150	100	60	23	22	+5/-5	Dhs4	50	22	12	0.8	5	From -16 to 90	Dark Grey/Green	
DT3-hs4-28T-FG-DG/GR	4800	200	200	100	75	27	28	+6/-6	Dhs4	50	22	12	0.8	5	From -16 to 90	Dark Grey/Green	
DT4-hs4-28T-FG-DG/GR	6000	200	250	120	95	27	28	+9/-9	Dhs4	50	27	14	0.8	5	From -16 to 90	Dark Grey/Green	
DT5-hs4-28T-FG-DG/GR	9600	250	320	125	125	55	28	+9/-9	Dhs4	50	32	18	0.8	5	From -16 to 90	Dark Grey/Green	
DT6-hs4-30T-FG-DG/GR	14400	300	400	125	148	50	30	+10/-10	Dhs4	50	32	18	0.8	5	From -16 to 90	Dark Grey/Green	
DT7-hs4-32T-FG-DG/GR	24000	400	500	130	200	70	32	+10/-10	Dhs4	50	39	22	0.8	5	From -16 to 90	Dark Grey/Green	
DT0-hs5-18T-FG-DG/GR	2800	100	100	118	42	23	18	+3/-3	Dhs5	80	19	10	0.8	5	From -16 to 90	Dark Grey/Green	Applications : Forging Hammers, Heavy Gen Sets, Heavy Industrial machines, Test Rigs, Heavy presses etc.
DT1-hs5-22T-FG-DG/GR	3700	115	115	124	50	24	22	+4/-4	Dhs5	80	19	10	0.8	5	From -16 to 90	Dark Grey/Green	
DT2-hs5-22T-FG-DG/GR	6300	150	150	130	60	23	22	+5/-5	Dhs5	80	22	12	0.8	5	From -16 to 90	Dark Grey/Green	
DT3-hs5-28T-FG-DG/GR	11200	200	200	130	75	27	28	+6/-6	Dhs5	80	22	12	0.8	5	From -16 to 90	Dark Grey/Green	
DT4-hs5-28T-FG-DG/GR	14000	200	250	150	95	27	28	+9/-9	Dhs5	80	27	14	0.8	5	From -16 to 90	Dark Grey/Green	
DT5-hs5-28T-FG-DG/GR	22400	250	320	155	125	55	28	+9/-9	Dhs5	80	32	18	0.8	5	From -16 to 90	Dark Grey/Green	
DT6-hs5-30T-FG-DG/GR	33600	300	400	155	148	50	30	+10/-10	Dhs5	80	32	18	0.8	5	From -16 to 90	Dark Grey/Green	
DT7-hs5-32T-FG-DG/GR	56000	400	500	160	200	70	32	+10/-10	Dhs5	80	39	22	0.8	5	From -16 to 90	Dark Grey/Green	



Model	Load Capacity Kg/pc	Length (L) mm	Width (B) mm	Height (H) at mean position (mm)	d (mm)	e (mm)	Bore G (mm)	Adjustment Range (mm)	Bottom pad Type	Bottom pad Thickness (mm)	SW1 (mm)	SW2 (mm)	Coeff. of Friction against Concrete	Natural Frequency at Max. Load (Hz)	Temperature Range (°C)	Color	Applications
DT0-h-18T-FG-DG/GR	3000	100	100	53	42	23	18	+3/-3	Dh	15	19	10	0.6	45	From -16 to 90	Dark Grey/Green	Applications : Very Heavy and long bed machines, long machining centres, planners etc.
DT1-h-22T-FG-DG/GR	3970	115	115	59	50	24	22	+4/-4	Dh	15	19	10	0.6	45	From -16 to 90	Dark Grey/Green	
DT2-h-22T-FG-DG/GR	6750	150	150	65	60	23	22	+5/-5	Dh	15	22	12	0.6	45	From -16 to 90	Dark Grey/Green	
DT3-h-28T-FG-DG/GR	12000	200	200	65	75	27	28	+6/-6	Dh	15	22	12	0.6	45	From -16 to 90	Dark Grey/Green	
DT4-h-28T-FG-DG/GR	15000	200	250	85	95	27	28	+9/-9	Dh	15	27	14	0.6	45	From -16 to 90	Dark Grey/Green	
DT5-h-28T-FG-DG/GR	24000	250	320	90	125	55	28	+9/-9	Dh	15	32	18	0.6	45	From -16 to 90	Dark Grey/Green	
DT6-h-30T-FG-DG/GR	36000	300	400	90	148	50	30	+10/-10	Dh	15	32	18	0.6	45	From -16 to 90	Dark Grey/Green	
DT7-h-32T-FG-DG/GR	60000	400	500	95	200	70	32	+10/-10	Dh	15	39	22	0.6	45	From -16 to 90	Dark Grey/Green	



DT0



DT2

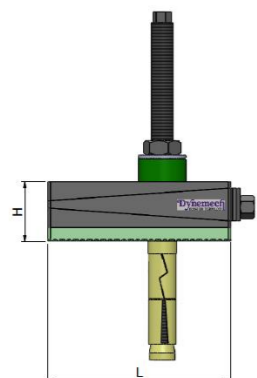
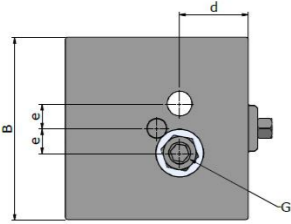


DT4



DT6

Model	Load Capacity Kg/pc	Length (L) mm	Width (B) mm	Height (H) at mean position (mm)	d (mm)	e (mm)	Bore G (mm)	Adjustment Range (mm)	Bottom pad Type	Bottom pad Thickness (mm)	SW1 (mm)	SW2 (mm)	Coeff. of Friction against Concrete	Natural Frequency at Max. Load (Hz)	Temperature Range (°C)	Color	Applications
DT0-a1-18T-FG-DG/GR	1800	100	100	40	42	23	18	+3/-3	Da1	2	19	10	0.8	70	From -16 to 90	Dark Grey/Green	
DT1-a1-22T-FG-DG/GR	2300	115	115	46	50	24	22	+4/-4	Da1	2	19	10	0.8	70	From -16 to 90	Dark Grey/Green	
DT2-a1-22T-FG-DG/GR	4000	150	150	52	60	23	22	+5/-5	Da1	2	22	12	0.8	70	From -16 to 90	Dark Grey/Green	
DT3-a1-28T-FG-DG/GR	7200	200	200	52	75	27	28	+6/-6	Da1	2	22	12	0.8	70	From -16 to 90	Dark Grey/Green	
DT4-a1-28T-FG-DG/GR	9000	200	250	72	95	27	28	+9/-9	Da1	2	27	14	0.8	70	From -16 to 90	Dark Grey/Green	
DT5-a1-28T-FG-DG/GR	14400	250	320	77	125	55	28	+9/-9	Da1	2	32	18	0.8	70	From -16 to 90	Dark Grey/Green	
DT6-a1-30T-FG-DG/GR	21600	300	400	77	148	50	30	+10/-10	Da1	2	32	18	0.8	70	From -16 to 90	Dark Grey/Green	
DT7-a1-32T-FG-DG/GR	36000	400	500	82	200	70	32	+10/-10	Da1	2	39	22	0.8	70	From -16 to 90	Dark Grey/Green	



DT0



DT2

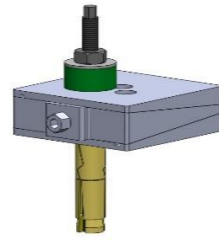
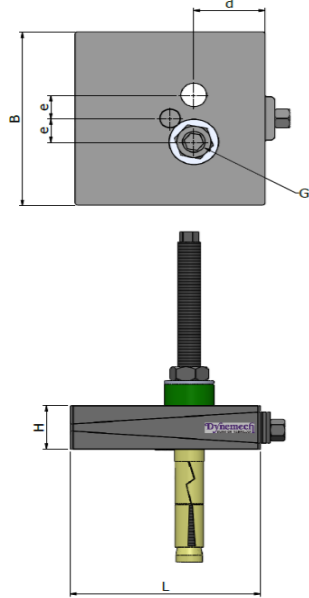


DT4

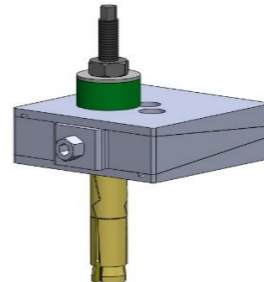


DT6

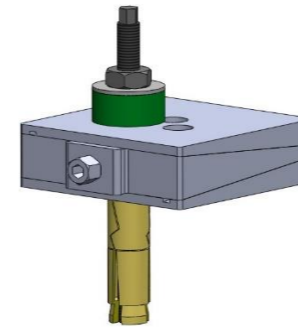
Model	Load Capacity Kg/pc	Length (L) mm	Width (B) mm	Height (H) at mean position (mm)	d (mm)	e (mm)	Bore G (mm)	Adjustment Range (mm)	Bottom pad Type	Bottom pad Thickness (mm)	SW1 (mm)	SW2 (mm)	Coeff. of Friction against Concrete	Natural Frequency at Max. Load (Hz)	Temperature Range (°C)	Color	Applications
DT0-a2-18T-FG-DG/GR	1000	100	100	46	42	23	18	+3/-3	Da2	8	19	10	0.9	45	From -16 to 90	Dark Grey/Green	
DT1-a2-22T-FG-DG/GR	1300	115	115	52	50	24	22	+4/-4	Da2	8	19	10	0.9	45	From -16 to 90	Dark Grey/Green	
DT2-a2-22T-FG-DG/GR	2250	150	150	58	60	23	22	+5/-5	Da2	8	22	12	0.9	45	From -16 to 90	Dark Grey/Green	
DT3-a2-28T-FG-DG/GR	4000	200	200	58	75	27	28	+6/-6	Da2	8	22	12	0.9	45	From -16 to 90	Dark Grey/Green	
DT4-a2-28T-FG-DG/GR	5000	200	250	78	95	27	28	+9/-9	Da2	8	27	14	0.9	45	From -16 to 90	Dark Grey/Green	
DT5-a2-28T-FG-DG/GR	8000	250	320	83	125	55	28	+9/-9	Da2	8	32	18	0.9	45	From -16 to 90	Dark Grey/Green	
DT6-a2-30T-FG-DG/GR	12000	300	400	83	148	50	30	+10/-10	Da2	8	32	18	0.9	45	From -16 to 90	Dark Grey/Green	
DT7-a2-32T-FG-DG/GR	20000	400	500	88	200	70	32	+10/-10	Da2	8	39	22	0.9	45	From -16 to 90	Dark Grey/Green	



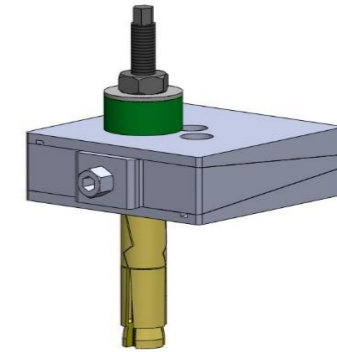
DT0



DT2



DT4



DT6

Model	Load Capacity Kg/pc	Length (L) mm	Width (B) mm	Height (H) at mean position (mm)	d (mm)	e (mm)	Bore G (mm)	Adjustment Range (mm)	Bottom pad Type	Bottom pad Thickness (mm)	SW1 (mm)	SW2 (mm)	Coeff. of Friction against Concrete	Natural Frequency at Max. Load (Hz)	Temperature Range (°C)	Color	Applications
DT0-18T-FG-DG/GR	2600	100	100	38	42	23	18	+3/-3	X	X	19	10	X	X	From -16 to 90	Dark Grey/Green	Applications : For levelling of all Precicion Machines.
DT1-22T-FG-DG/GR	3600	115	115	44	50	24	22	+4/-4	X	X	19	10	X	X	From -16 to 90	Dark Grey/Green	
DT2-22T-FG-DG/GR	5800	150	150	50	60	23	22	+5/-5	X	X	22	12	X	X	From -16 to 90	Dark Grey/Green	
DT3-28T-FG-DG/GR	10400	200	200	50	75	27	28	+6/-6	X	X	22	12	X	X	From -16 to 90	Dark Grey/Green	
DT4-28T-FG-DG/GR	13000	200	250	70	95	27	28	+9/-9	X	X	27	14	X	X	From -16 to 90	Dark Grey/Green	
DT5-28T-FG-DG/GR	20000	250	320	75	125	55	28	+9/-9	X	X	32	18	X	X	From -16 to 90	Dark Grey/Green	
DT6-30T-FG-DG/GR	30000	300	400	75	148	50	30	+10/-10	X	X	32	18	X	X	From -16 to 90	Dark Grey/Green	
DT7-32T-FG-DG/GR	52000	400	500	80	160	70	32	+10/-10	X	X	39	22	X	X	From -16 to 90	Dark Grey/Green	