

DFP1

DFP3

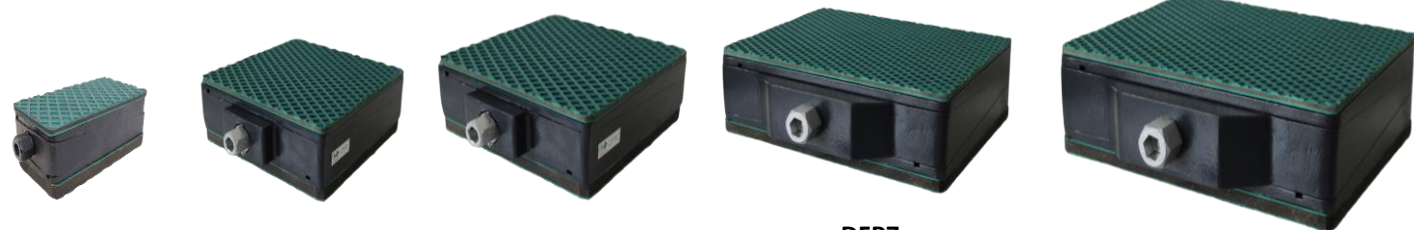
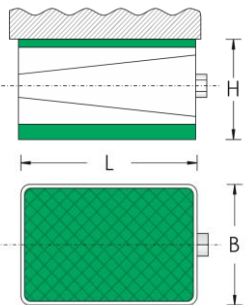
DFP5

DFP7

DFP8

Dynemech Wedge Mounts, Series DFP-150 are designed for industrial machine tools that require precision levelling. Series DFP, have a height of 100mm at mean position to help proper cleaning and repairing under the machine. All other specifications are similar to Series DF.

Model	Load Kg/pc	Length (L) mm	Width (B) mm	Height (H) at mean position (mm)	Adjustment range (mm)	Bottom pad Type	Bottom pad Thickness (mm)	Top pad Type	Top pad Thickness (mm)	SW1 (mm)	SW2 (mm)	Coeff. of Friction against Concrete	Natural Frequency at Max. Load (Hz)	Temperature Range (°C)	Color	Applications
DFP1-u-158-A2-FG-DG	400	105	55	158	+4/-4	Du	15	Da2	8	16	8	0.9	18	From -16 to 90	Dark Grey/Green	Applications: Tool Room Machines, Plastic Injection Moulding Machines, Pressure Die Casting Machines, Shaper, Printing and Textile Machines etc.
DFP2-u-158-A2-FG-DG	900	150	75	158	+5/-5	Du	15	Da2	8	19	10	0.9	18	From -16 to 90	Dark Grey/Green	
DFP3-u-158-A2-FG-DG	1500	200	100	158	+5/-5	Du	15	Da2	8	22	12	0.9	18	From -16 to 90	Dark Grey/Green	
DFP4-u-158-A2-FG-DG	3200	200	200	158	+6/-6	Du	15	Da2	8	22	12	0.9	18	From -16 to 90	Dark Grey/Green	
DFP5-u-158-A2-FG-DG	4000	200	250	158	+9/-9	Du	15	Da2	8	27	14	0.9	18	From -16 to 90	Dark Grey/Green	
DFP6-u-158-A2-FG-DG	6400	250	320	158	+9/-9	Du	15	Da2	8	32	18	0.9	18	From -16 to 90	Dark Grey/Green	
DFP7-u-158-A2-FG-DG	9600	300	400	158	+10/-10	Du	15	Da2	8	32	18	0.9	18	From -16 to 90	Dark Grey/Green	
DFP8-u-158-A2-FG-DG	16000	400	500	158	+10/-10	Du	15	Da2	8	39	22	0.9	18	From -16 to 90	Dark Grey/Green	
DFP1-u-10-153-A2-FG-DG	400	105	55	153	+4/-4	Du-10	10	Da2	8	16	8	0.9	25	From -16 to 90	Dark Grey/Green	Applications: Tool Room Machines, Plastic Injection Moulding Machines, Pressure Die Casting Machines, Shaper, Printing and Textile Machines etc.
DFP2-u-10-153-A2-FG-DG	900	150	75	153	+5/-5	Du-10	10	Da2	8	19	10	0.9	25	From -16 to 90	Dark Grey/Green	
DFP3-u-10-153-A2-FG-DG	1500	200	100	153	+5/-5	Du-10	10	Da2	8	22	12	0.9	25	From -16 to 90	Dark Grey/Green	
DFP4-u-10-153-A2-FG-DG	3200	200	200	153	+6/-6	Du-10	10	Da2	8	22	12	0.9	25	From -16 to 90	Dark Grey/Green	
DFP5-u-10-153-A2-FG-DG	4000	200	250	153	+9/-9	Du-10	10	Da2	8	27	14	0.9	25	From -16 to 90	Dark Grey/Green	
DFP6-u-10-153-A2-FG-DG	6400	250	320	153	+9/-9	Du-10	10	Da2	8	32	18	0.9	25	From -16 to 90	Dark Grey/Green	
DFP7-u-10-153-A2-FG-DG	9600	300	400	153	+10/-10	Du-10	10	Da2	8	32	18	0.9	25	From -16 to 90	Dark Grey/Green	
DFP8-u-10-153-A2-FG-DG	16000	400	500	153	+10/-10	Du-10	10	Da2	8	39	22	0.9	25	From -16 to 90	Dark Grey/Green	
DFP1-u-12-155-A2-FG-DG	400	105	55	155	+4/-4	Du-12	12	Da2	8	16	8	0.9	20	From -16 to 90	Dark Grey/Green	Applications: Tool Room Machines, Plastic Injection Moulding Machines, Pressure Die Casting Machines, Shaper, Printing and Textile Machines etc.
DFP2-u-12-155-A2-FG-DG	900	150	75	155	+5/-5	Du-12	12	Da2	8	19	10	0.9	20	From -16 to 90	Dark Grey/Green	
DFP3-u-12-155-A2-FG-DG	1500	200	100	155	+5/-5	Du-12	12	Da2	8	22	12	0.9	20	From -16 to 90	Dark Grey/Green	
DFP4-u-12-155-A2-FG-DG	3200	200	200	155	+6/-6	Du-12	12	Da2	8	22	12	0.9	20	From -16 to 90	Dark Grey/Green	
DFP5-u-12-155-A2-FG-DG	4000	200	250	155	+9/-9	Du-12	12	Da2	8	27	14	0.9	20	From -16 to 90	Dark Grey/Green	
DFP6-u-12-155-A2-FG-DG	6400	250	320	155	+9/-9	Du-12	12	Da2	8	32	18	0.9	20	From -16 to 90	Dark Grey/Green	
DFP7-u-12-155-A2-FG-DG	9600	300	400	155	+10/-10	Du-12	12	Da2	8	32	18	0.9	20	From -16 to 90	Dark Grey/Green	
DFP8-u-12-155-A2-FG-DG	16000	400	500	155	+10/-10	Du-12	12	Da2	8	39	22	0.9	20	From -16 to 90	Dark Grey/Green	



DFP1

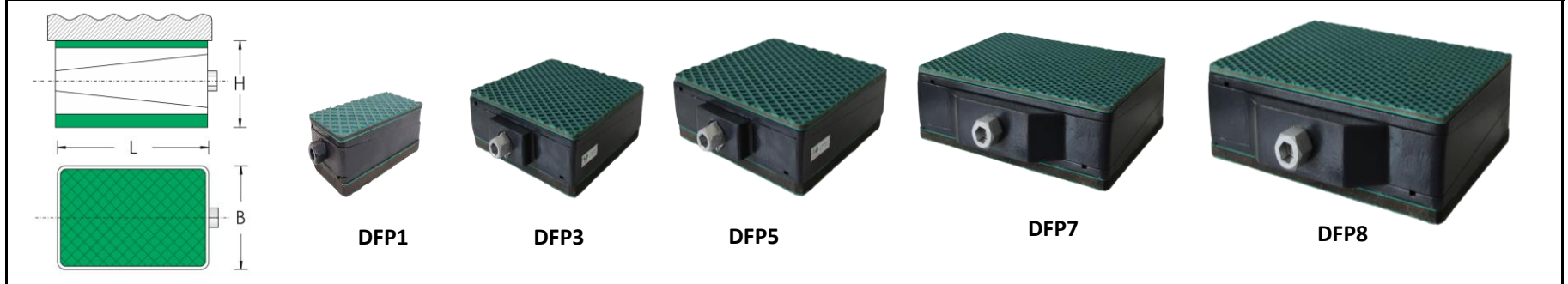
DFP3

DFP5

DFP7

DFP8

Model	Load Kg/pc	Length (L) mm	Width (B) mm	Height (H) at mean position (mm)	Adjustment range (mm)	Bottom pad Type	Bottom pad Thickness (mm)	Top pad Type	Top pad Thickness (mm)	SW1 (mm)	SW2 (mm)	Coeff. of Friction against Concrete	Natural Frequency at Max. Load (Hz)	Temperature Range (°C)	Color	Applications
DFP1-m-152-A1-FG-DG	500	105	55	152	+4/-4	Dm	15	Da1	2	16	8	0.7	30	From -16 to 90	Dark Grey/Green	Applications: Lathe Machines, Machining Centres, Milling Machines, Precision Grinding Machines, Drilling Machines, Turning Centres, Transfer Lines etc.
DFP2-m-152-A1-FG-DG	1200	150	75	152	+5/-5	Dm	15	Da1	2	19	10	0.7	30	From -16 to 90	Dark Grey/Green	
DFP3-m-152-A1-FG-DG	2000	200	100	152	+5/-5	Dm	15	Da1	2	22	12	0.7	30	From -16 to 90	Dark Grey/Green	
DFP4-m-152-A1-FG-DG	4000	200	200	152	+6/-6	Dm	15	Da1	2	22	12	0.7	30	From -16 to 90	Dark Grey/Green	
DFP5-m-152-A1-FG-DG	5000	200	250	152	+9/-9	Dm	15	Da1	2	27	14	0.7	30	From -16 to 90	Dark Grey/Green	
DFP6-m-152-A1-FG-DG	8000	250	320	152	+9/-9	Dm	15	Da1	2	32	18	0.7	30	From -16 to 90	Dark Grey/Green	
DFP7-m-152-A1-FG-DG	12000	300	400	152	+10/-10	Dm	15	Da1	2	32	18	0.7	30	From -16 to 90	Dark Grey/Green	
DFP8-m-152-A1-FG-DG	20000	400	500	152	+10/-10	Dm	15	Da1	2	39	22	0.7	30	From -16 to 90	Dark Grey/Green	



Model	Load Kg/pc	Length (L) mm	Width (B) mm	Height (H) at mean position (mm)	Adjustment range (mm)	Bottom pad Type	Bottom pad Thickness (mm)	Top pad Type	Top pad Thickness (mm)	SW1 (mm)	SW2 (mm)	Coeff. of Friction against Concrete	Natural Frequency at Max. Load (Hz)	Temperature Range (°C)	Color	Applications
DFP1-i-168-A2-FG-DG	600	105	55	168	+4/-4	Di	25	Da2	8	16	8	0.8	7	From -16 to 90	Dark Grey/Green	Applications: Power Presses, Stamping Machines, Shearing Machines, Punching Machines.
DFP2-i-168-A2-FG-DG	1500	150	75	168	+5/-5	Di	25	Da2	8	19	10	0.8	7	From -16 to 90	Dark Grey/Green	
DFP3-i-168-A2-FG-DG	2500	200	100	168	+5/-5	Di	25	Da2	8	22	12	0.8	7	From -16 to 90	Dark Grey/Green	
DFP4-i-168-A2-FG-DG	5200	200	200	168	+6/-6	Di	25	Da2	8	22	12	0.8	7	From -16 to 90	Dark Grey/Green	
DFP5-i-168-A2-FG-DG	6500	200	250	168	+9/-9	Di	25	Da2	8	27	14	0.8	7	From -16 to 90	Dark Grey/Green	
DFP6-i-168-A2-FG-DG	10000	250	320	168	+9/-9	Di	25	Da2	8	32	18	0.8	7	From -16 to 90	Dark Grey/Green	
DFP7-i-168-A2-FG-DG	15000	300	400	168	+10/-10	Di	25	Da2	8	32	18	0.8	7	From -16 to 90	Dark Grey/Green	
DFP8-i-168-A2-FG-DG	26000	400	500	168	+10/-10	Di	25	Da2	8	39	22	0.8	7	From -16 to 90	Dark Grey/Green	

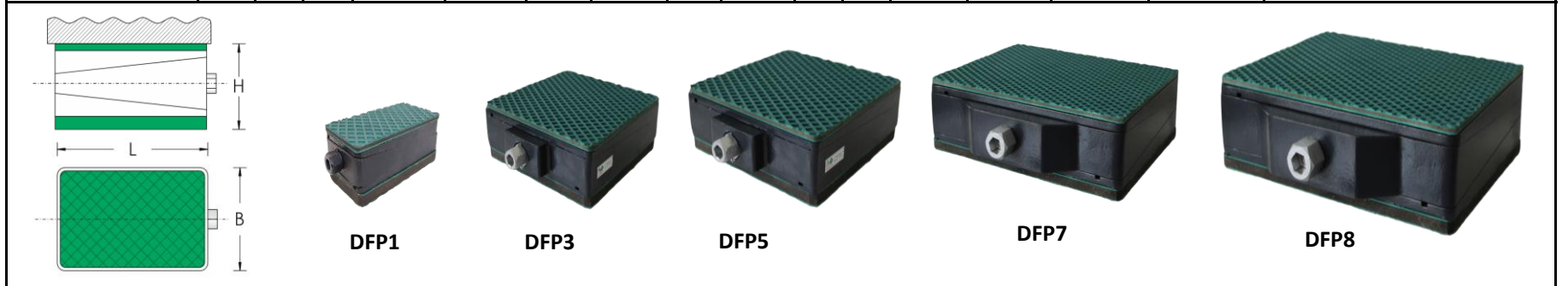


Model	Load Kg/pc	Length (L) mm	Width (B) mm	Height (H) at mean position (mm)	Adjustment range (mm)	Bottom pad Type	Bottom pad Thickness (mm)	Top pad Type	Top pad Thickness (mm)	SW1 (mm)	SW2 (mm)	Coeff. of Friction against Concrete	Natural Frequency at Max. Load (Hz)	Temperature Range (°C)	Color	Applications
DFP1-p1-152-A1-FG-DG	230	105	55	152	+4/-4	Dp1	15	Da1	2	16	8	0.8	7	From -16 to 90	Dark Grey/Green	Applications: Passive vibration control of measuring & Testing Machines, Grinders etc.
DFP2-p1-152-A1-FG-DG	450	150	75	152	+5/-5	Dp1	15	Da1	2	19	10	0.8	7	From -16 to 90	Dark Grey/Green	
DFP3-p1-152-A1-FG-DG	800	200	100	152	+5/-5	Dp1	15	Da1	2	22	12	0.8	7	From -16 to 90	Dark Grey/Green	
DFP4-p1-152-A1-FG-DG	1600	200	200	152	+6/-6	Dp1	15	Da1	2	22	12	0.8	7	From -16 to 90	Dark Grey/Green	
DFP5-p1-152-A1-FG-DG	2000	200	250	152	+9/-9	Dp1	15	Da1	2	27	14	0.8	7	From -16 to 90	Dark Grey/Green	

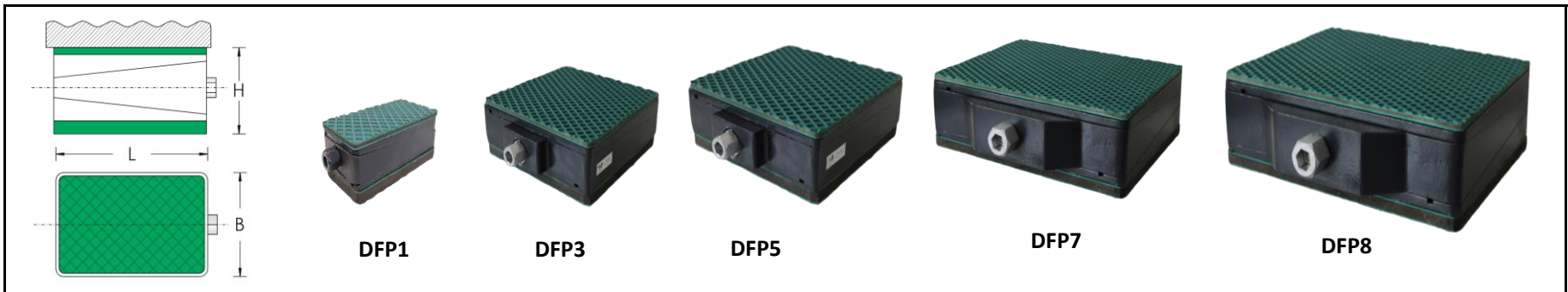
DFP6-p1-152-A1-FG-DG	3200	250	320	152	+9/-9	Dp1	15	Da1	2	32	18	0.8	7	From -16 to 90	Dark Grey/Green
DFP7-p1-152-A1-FG-DG	4800	300	400	152	+10/-10	Dp1	15	Da1	2	32	18	0.8	7	From -16 to 90	Dark Grey/Green
DFP8-p1-152-A1-FG-DG	8000	400	500	152	+10/-10	Dp1	15	Da1	2	39	22	0.8	7	From -16 to 90	Dark Grey/Green
DFP1-p2-157-A1-FG-DG	180	105	55	157	+4/-4	Dp2	20	Da1	2	16	8	0.8	12	From -16 to 90	Dark Grey/Green
DFP2-p2-157-A1-FG-DG	400	150	75	157	+5/-5	Dp2	20	Da1	2	19	10	0.8	12	From -16 to 90	Dark Grey/Green
DFP3-p2-157-A1-FG-DG	725	200	100	157	+5/-5	Dp2	20	Da1	2	22	12	0.8	12	From -16 to 90	Dark Grey/Green
DFP4-p2-157-A1-FG-DG	1450	200	200	157	+6/-6	Dp2	20	Da1	2	22	12	0.8	12	From -16 to 90	Dark Grey/Green
DFP5-p2-157-A1-FG-DG	1800	200	250	157	+9/-9	Dp2	20	Da1	2	27	14	0.8	12	From -16 to 90	Dark Grey/Green
DFP6-p2-157-A1-FG-DG	2900	250	320	157	+9/-9	Dp2	20	Da1	2	32	18	0.8	12	From -16 to 90	Dark Grey/Green
DFP7-p2-157-A1-FG-DG	4400	300	400	157	+10/-10	Dp2	20	Da1	2	32	18	0.8	12	From -16 to 90	Dark Grey/Green
DFP8-p2-157-A1-FG-DG	7500	400	500	157	+10/-10	Dp2	20	Da1	2	39	22	0.8	12	From -16 to 90	Dark Grey/Green
DFP1-p3-161-A1-FG-DG	340	105	55	161	+4/-4	Dp3	24	Da1	2	16	8	0.8	7	From -16 to 90	Dark Grey/Green
DFP2-p3-161-A1-FG-DG	670	150	75	161	+5/-5	Dp3	24	Da1	2	19	10	0.8	7	From -16 to 90	Dark Grey/Green
DFP3-p3-161-A1-FG-DG	1200	200	100	161	+5/-5	Dp3	24	Da1	2	22	12	0.8	7	From -16 to 90	Dark Grey/Green
DFP4-p3-161-A1-FG-DG	2400	200	200	161	+6/-6	Dp3	24	Da1	2	22	12	0.8	7	From -16 to 90	Dark Grey/Green
DFP5-p3-161-A1-FG-DG	3000	200	250	161	+9/-9	Dp3	24	Da1	2	27	14	0.8	7	From -16 to 90	Dark Grey/Green
DFP6-p3-161-A1-FG-DG	4800	250	320	161	+9/-9	Dp3	24	Da1	2	32	18	0.8	7	From -16 to 90	Dark Grey/Green
DFP7-p3-161-A1-FG-DG	7200	300	400	161	+10/-10	Dp3	24	Da1	2	32	18	0.8	7	From -16 to 90	Dark Grey/Green
DFP8-p3-161-A1-FG-DG	12000	400	500	161	+10/-10	Dp3	24	Da1	2	39	22	0.8	7	From -16 to 90	Dark Grey/Green

Applications : Measuring & Testing Machines, Surface Plates, Hardness Testers, Microscopes, EDM Machines, Profile Projectors etc.

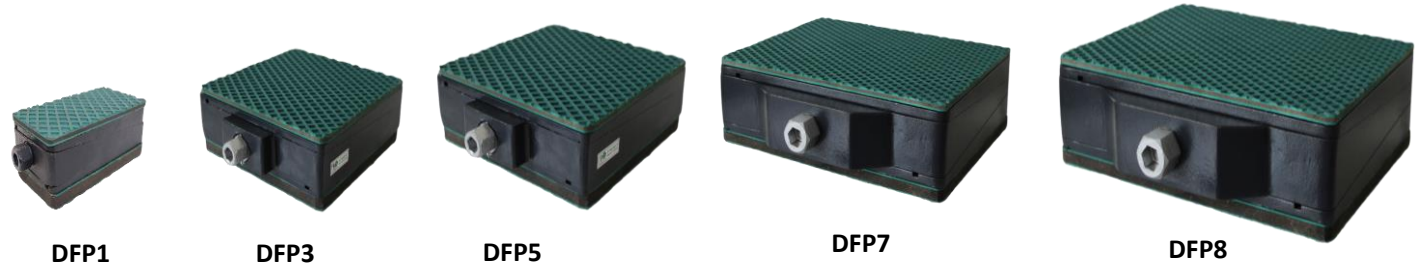
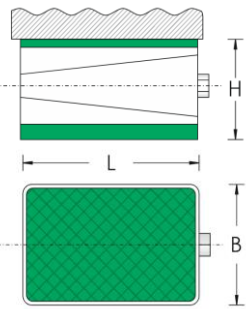
Applications : Measuring & Testing Machines, Surface Plates, Hardness Testers, Microscopes, EDM Machines, Profile Projectors etc.



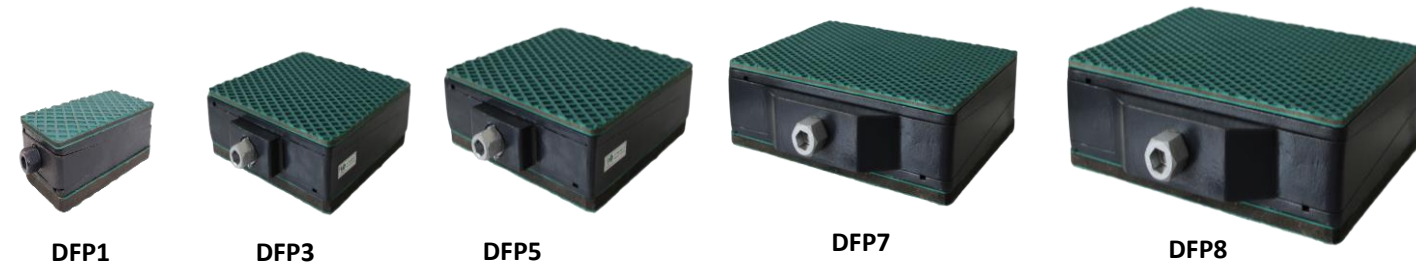
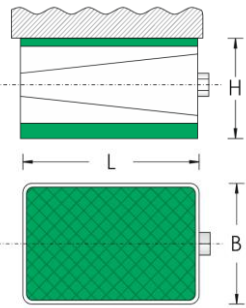
Model	Load Kg/pc	Length (L) mm	Width (B) mm	Height (H) at mean position (mm)	Adjustment range (mm)	Bottom pad Type	Bottom pad Thickness (mm)	Top pad Type	Top pad Thickness (mm)	SW1 (mm)	SW2 (mm)	Coeff. of Friction against Concrete	Natural Frequency at Max. Load (Hz)	Temperature Range (°C)	Color	Applications
DFP1-s1-157-A1-FG-DG	280	105	55	157	+4/-4	Ds1	20	Da1	2	16	8	0.8	15	From -16 to 90	Dark Grey/Green	Applications : Active & Passive vibration isolation of metrology and production machines.
DFP2-s1-157-A1-FG-DG	560	150	75	157	+5/-5	Ds1	20	Da1	2	19	10	0.8	15	From -16 to 90	Dark Grey/Green	
DFP3-s1-157-A1-FG-DG	1000	200	100	157	+5/-5	Ds1	20	Da1	2	22	12	0.8	15	From -16 to 90	Dark Grey/Green	
DFP4-s1-157-A1-FG-DG	2000	200	200	157	+6/-6	Ds1	20	Da1	2	22	12	0.8	15	From -16 to 90	Dark Grey/Green	
DFP5-s1-157-A1-FG-DG	2500	200	250	157	+9/-9	Ds1	20	Da1	2	27	14	0.8	15	From -16 to 90	Dark Grey/Green	
DFP6-s1-157-A1-FG-DG	4000	250	320	157	+9/-9	Ds1	20	Da1	2	32	18	0.8	15	From -16 to 90	Dark Grey/Green	
DFP7-s1-157-A1-FG-DG	6000	300	400	157	+10/-10	Ds1	20	Da1	2	32	18	0.8	15	From -16 to 90	Dark Grey/Green	
DFP8-s1-157-A1-FG-DG	10000	400	500	157	+10/-10	Ds1	20	Da1	2	39	22	0.8	15	From -16 to 90	Dark Grey/Green	
DFP1-s2-162-A1-FG-DG	350	105	55	162	+4/-4	Ds2	25	Da1	2	16	8	0.8	8	From -16 to 90	Dark Grey/Green	Applications : Medium Presses, Stamping machines, also well suited for high speed rotating machines on upper floors.
DFP2-s2-162-A1-FG-DG	800	150	75	162	+5/-5	Ds2	25	Da1	2	19	10	0.8	8	From -16 to 90	Dark Grey/Green	
DFP3-s2-162-A1-FG-DG	1400	200	100	162	+5/-5	Ds2	25	Da1	2	22	12	0.8	8	From -16 to 90	Dark Grey/Green	
DFP4-s2-162-A1-FG-DG	2800	200	200	162	+6/-6	Ds2	25	Da1	2	22	12	0.8	8	From -16 to 90	Dark Grey/Green	
DFP5-s2-162-A1-FG-DG	3500	200	250	162	+9/-9	Ds2	25	Da1	2	27	14	0.8	8	From -16 to 90	Dark Grey/Green	
DFP6-s2-162-A1-FG-DG	5500	250	320	162	+9/-9	Ds2	25	Da1	2	32	18	0.8	8	From -16 to 90	Dark Grey/Green	
DFP7-s2-162-A1-FG-DG	8500	300	400	162	+10/-10	Ds2	25	Da1	2	32	18	0.8	8	From -16 to 90	Dark Grey/Green	
DFP8-s2-162-A1-FG-DG	14000	400	500	162	+10/-10	Ds2	25	Da1	2	39	22	0.8	8	From -16 to 90	Dark Grey/Green	



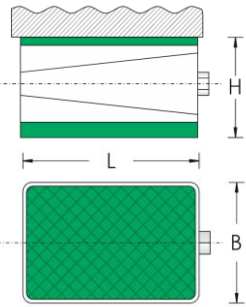
Model	Load Kg/pc	Length (L) mm	Width (B) mm	Height (H) at mean position (mm)	Adjustment range (mm)	Bottom pad Type	Bottom pad Thickness (mm)	Top pad Type	Top pad Thickness (mm)	SW1 (mm)	SW2 (mm)	Coeff. of Friction against Concrete	Natural Frequency at Max. Load (Hz)	Temperature Range (°C)	Color	Applications
DFP1-hs1-208-A2-FG-DG	1155	105	55	208	+4/-4	Dhs1	65	Da2	8	16	8	0.8	6	From -16 to 90	Dark Grey/Green	Applications : Forging Hammers, Heavy Gen Sets, Heavy Industrial machines, Test Rigs, Heavy presses etc.
DFP2-hs1-208-A2-FG-DG	2250	150	75	208	+5/-5	Dhs1	65	Da2	8	19	10	0.8	6	From -16 to 90	Dark Grey/Green	
DFP3-hs1-208-A2-FG-DG	4000	200	100	208	+5/-5	Dhs1	65	Da2	8	22	12	0.8	6	From -16 to 90	Dark Grey/Green	
DFP4-hs1-208-A2-FG-DG	8000	200	200	208	+6/-6	Dhs1	65	Da2	8	22	12	0.8	6	From -16 to 90	Dark Grey/Green	
DFP5-hs1-208-A2-FG-DG	10000	200	250	208	+9/-9	Dhs1	65	Da2	8	27	14	0.8	6	From -16 to 90	Dark Grey/Green	
DFP6-hs1-208-A2-FG-DG	16000	250	320	208	+9/-9	Dhs1	65	Da2	8	32	18	0.8	6	From -16 to 90	Dark Grey/Green	
DFP7-hs1-208-A2-FG-DG	24000	300	400	208	+10/-10	Dhs1	65	Da2	8	32	18	0.8	6	From -16 to 90	Dark Grey/Green	
DFP8-hs1-208-A2-FG-DG	40000	400	500	208	+10/-10	Dhs1	65	Da2	8	39	22	0.8	6	From -16 to 90	Dark Grey/Green	
DFP1-hs2-202-A1-FG-DG	460	105	55	202	+4/-4	Dhs2	65	Da1	2	16	8	0.8	4	From -16 to 90	Dark Grey/Green	Applications : Forging Hammers, Heavy Gen Sets, Heavy Industrial machines, Test Rigs, Heavy presses, crushers etc.
DFP2-hs2-202-A1-FG-DG	900	150	75	202	+5/-5	Dhs2	65	Da1	2	19	10	0.8	4	From -16 to 90	Dark Grey/Green	
DFP3-hs2-202-A1-FG-DG	1600	200	100	202	+5/-5	Dhs2	65	Da1	2	22	12	0.8	4	From -16 to 90	Dark Grey/Green	
DFP4-hs2-202-A1-FG-DG	3200	200	200	202	+6/-6	Dhs2	65	Da1	2	22	12	0.8	4	From -16 to 90	Dark Grey/Green	
DFP5-hs2-202-A1-FG-DG	4000	200	250	202	+9/-9	Dhs2	65	Da1	2	27	14	0.8	4	From -16 to 90	Dark Grey/Green	
DFP6-hs2-202-A1-FG-DG	6400	250	320	202	+9/-9	Dhs2	65	Da1	2	32	18	0.8	4	From -16 to 90	Dark Grey/Green	
DFP7-hs2-202-A1-FG-DG	9600	300	400	202	+10/-10	Dhs2	65	Da1	2	32	18	0.8	4	From -16 to 90	Dark Grey/Green	
DFP8-hs2-202-A1-FG-DG	16000	400	500	202	+10/-10	Dhs2	65	Da1	2	39	22	0.8	4	From -16 to 90	Dark Grey/Green	
DFP1-hs3-193-A2-FG-DG	1600	105	55	193	+4/-4	Dhs3	50	Da2	8	16	8	0.8	7	From -16 to 90	Dark Grey/Green	Applications : Forging Hammers, Heavy Gen Sets, Heavy Industrial machines, Test Rigs, Heavy presses etc.
DFP2-hs3-193-A2-FG-DG	3100	150	75	193	+5/-5	Dhs3	50	Da2	8	19	10	0.8	7	From -16 to 90	Dark Grey/Green	
DFP3-hs3-193-A2-FG-DG	5600	200	100	193	+5/-5	Dhs3	50	Da2	8	22	12	0.8	7	From -16 to 90	Dark Grey/Green	
DFP4-hs3-193-A2-FG-DG	11200	200	200	193	+6/-6	Dhs3	50	Da2	8	22	12	0.8	7	From -16 to 90	Dark Grey/Green	
DFP5-hs3-193-A2-FG-DG	14000	200	250	193	+9/-9	Dhs3	50	Da2	8	27	14	0.8	7	From -16 to 90	Dark Grey/Green	
DFP6-hs3-193-A2-FG-DG	22400	250	320	193	+9/-9	Dhs3	50	Da2	8	32	18	0.8	7	From -16 to 90	Dark Grey/Green	
DFP7-hs3-193-A2-FG-DG	33600	300	400	193	+10/-10	Dhs3	50	Da2	8	32	18	0.8	7	From -16 to 90	Dark Grey/Green	
DFP8-hs3-193-A2-FG-DG	56000	400	500	193	+10/-10	Dhs3	50	Da2	8	39	22	0.8	7	From -16 to 90	Dark Grey/Green	
DFP1-hs4-187-A1-FG-DG	690	105	55	187	+4/-4	Dhs4	50	Da1	2	16	8	0.8	5	From -16 to 90	Dark Grey/Green	Applications : Forging Hammers, Heavy Gen Sets, Heavy Industrial machines, Test Rigs, Heavy presses, crushers etc.
DFP2-hs4-187-A1-FG-DG	1300	150	75	187	+5/-5	Dhs4	50	Da1	2	19	10	0.8	5	From -16 to 90	Dark Grey/Green	
DFP3-hs4-187-A1-FG-DG	2400	200	100	187	+5/-5	Dhs4	50	Da1	2	22	12	0.8	5	From -16 to 90	Dark Grey/Green	
DFP4-hs4-187-A1-FG-DG	4800	200	200	187	+6/-6	Dhs4	50	Da1	2	22	12	0.8	5	From -16 to 90	Dark Grey/Green	
DFP5-hs4-187-A1-FG-DG	6000	200	250	187	+9/-9	Dhs4	50	Da1	2	27	14	0.8	5	From -16 to 90	Dark Grey/Green	
DFP6-hs4-187-A1-FG-DG	9600	250	320	187	+9/-9	Dhs4	50	Da1	2	32	18	0.8	5	From -16 to 90	Dark Grey/Green	
DFP7-hs4-187-A1-FG-DG	14400	300	400	187	+10/-10	Dhs4	50	Da1	2	32	18	0.8	5	From -16 to 90	Dark Grey/Green	
DFP8-hs4-187-A1-FG-DG	24000	400	500	187	+10/-10	Dhs4	50	Da1	2	39	22	0.8	5	From -16 to 90	Dark Grey/Green	
DFP1-hs5-223-A2-FG-DG	1600	105	55	223	+4/-4	Dhs5	80	Da2	8	16	8	0.8	5	From -16 to 90	Dark Grey/Green	Applications : Forging Hammers, Heavy Gen Sets, Heavy Industrial machines, Test Rigs, Heavy presses etc.
DFP2-hs5-223-A2-FG-DG	3100	150	75	223	+5/-5	Dhs5	80	Da2	8	19	10	0.8	5	From -16 to 90	Dark Grey/Green	
DFP3-hs5-223-A2-FG-DG	5600	200	100	223	+5/-5	Dhs5	80	Da2	8	22	12	0.8	5	From -16 to 90	Dark Grey/Green	
DFP4-hs5-223-A2-FG-DG	11200	200	200	223	+6/-6	Dhs5	80	Da2	8	22	12	0.8	5	From -16 to 90	Dark Grey/Green	
DFP5-hs5-223-A2-FG-DG	14000	200	250	223	+9/-9	Dhs5	80	Da2	8	27	14	0.8	5	From -16 to 90	Dark Grey/Green	
DFP6-hs5-223-A2-FG-DG	22400	250	320	223	+9/-9	Dhs5	80	Da2	8	32	18	0.8	5	From -16 to 90	Dark Grey/Green	
DFP7-hs5-223-A2-FG-DG	33600	300	400	223	+10/-10	Dhs5	80	Da2	8	32	18	0.8	5	From -16 to 90	Dark Grey/Green	
DFP8-hs5-223-A2-FG-DG	56000	400	500	223	+10/-10	Dhs5	80	Da2	8	39	22	0.8	5	From -16 to 90	Dark Grey/Green	



Model	Load Kg/pc	Length (L) mm	Width (B) mm	Height (H) at mean position (mm)	Adjustment range (mm)	Bottom pad Type	Bottom pad Thickness (mm)	Top pad Type	Top pad Thickness (mm)	SW1 (mm)	SW2 (mm)	Coeff. of Friction against Concrete	Natural Frequency at Max. Load (Hz)	Temperature Range (°C)	Color	Applications
DFP1-h-158-A2-FG-DG	1740	105	55	158	+4/-4	Dh	15	Da2	8	16	8	0.6	45	From -16 to 90	Dark Grey/Green	Applications : Very Heavy and long bed machines, long machining centres, planners etc.
DFP2-h-158-A2-FG-DG	3380	150	75	158	+5/-5	Dh	15	Da2	8	19	10	0.6	45	From -16 to 90	Dark Grey/Green	
DFP3-h-158-A2-FG-DG	6000	200	100	158	+5/-5	Dh	15	Da2	8	22	12	0.6	45	From -16 to 90	Dark Grey/Green	
DFP4-h-158-A2-FG-DG	12000	200	200	158	+6/-6	Dh	15	Da2	8	22	12	0.6	45	From -16 to 90	Dark Grey/Green	
DFP5-h-158-A2-FG-DG	15000	200	250	158	+9/-9	Dh	15	Da2	8	27	14	0.6	45	From -16 to 90	Dark Grey/Green	
DFP6-h-158-A2-FG-DG	24000	250	320	158	+9/-9	Dh	15	Da2	8	32	18	0.6	45	From -16 to 90	Dark Grey/Green	
DFP7-h-158-A2-FG-DG	36000	300	400	158	+10/-10	Dh	15	Da2	8	32	18	0.6	45	From -16 to 90	Dark Grey/Green	
DFP8-h-158-A2-FG-DG	60000	400	500	158	+10/-10	Dh	15	Da2	8	39	22	0.6	45	From -16 to 90	Dark Grey/Green	



Model	Load Kg/pc	Length (L) mm	Width (B) mm	Height (H) at mean position (mm)	Adjustment range (mm)	Bottom pad Type	Bottom pad Thickness (mm)	Top pad Type	Top pad Thickness (mm)	SW1 (mm)	SW2 (mm)	Coeff. of Friction against Concrete	Natural Frequency at Max. Load (Hz)	Temperature Range (°C)	Color	Applications
DFP1-a1-139-A1-FG-DG	1030	105	55	139	+4/-4	Da1	2	Da1	2	16	8	0.8	70	From -16 to 90	Dark Grey/Green	
DFP2-a1-139-A1-FG-DG	2000	150	75	139	+5/-5	Da1	2	Da1	2	19	10	0.8	70	From -16 to 90	Dark Grey/Green	
DFP3-a1-139-A1-FG-DG	3600	200	100	139	+5/-5	Da1	2	Da1	2	22	12	0.8	70	From -16 to 90	Dark Grey/Green	
DFP4-a1-139-A1-FG-DG	7200	200	200	139	+6/-6	Da1	2	Da1	2	22	12	0.8	70	From -16 to 90	Dark Grey/Green	
DFP5-a1-139-A1-FG-DG	9000	200	250	139	+9/-9	Da1	2	Da1	2	27	14	0.8	70	From -16 to 90	Dark Grey/Green	
DFP6-a1-139-A1-FG-DG	14400	250	320	139	+9/-9	Da1	2	Da1	2	32	18	0.8	70	From -16 to 90	Dark Grey/Green	
DFP7-a1-139-A1-FG-DG	21600	300	400	139	+10/-10	Da1	2	Da1	2	32	18	0.8	70	From -16 to 90	Dark Grey/Green	
DFP8-a1-139-A1-FG-DG	36000	400	500	139	+10/-10	Da1	2	Da1	2	39	22	0.8	70	From -16 to 90	Dark Grey/Green	



DFP1



DFP3



DFP5

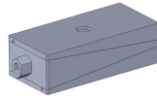
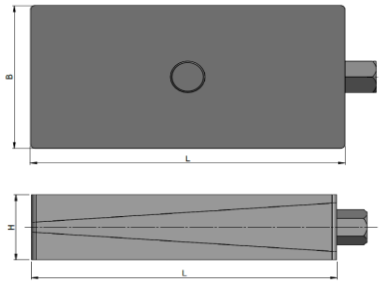


DFP7

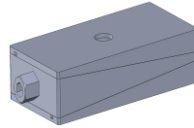


DFP8

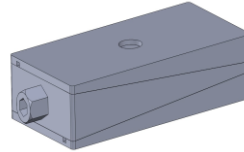
Model	Load Kg/pc	Length (L) mm	Width (B) mm	Height (H) at mean position (mm)	Adjustment range (mm)	Bottom pad Type	Bottom pad Thickness (mm)	Top pad Type	Top pad Thickness (mm)	SW1 (mm)	SW2 (mm)	Coeff. of Friction against Concrete	Natural Frequency at Max. Load (Hz)	Temperature Range (°C)	Color	Applications
DFP1-a2-151-A2-FG-DG	570	105	55	151	+4/-4	Da2	8	Da2	8	16	8	0.9	45	From -16 to 90	Dark Grey/Green	
DFP2-a2-151-A2-FG-DG	1120	150	75	151	+5/-5	Da2	8	Da2	8	19	10	0.9	45	From -16 to 90	Dark Grey/Green	
DFP3-a2-151-A2-FG-DG	2000	200	100	151	+5/-5	Da2	8	Da2	8	22	12	0.9	45	From -16 to 90	Dark Grey/Green	
DFP4-a2-151-A2-FG-DG	4000	200	200	151	+6/-6	Da2	8	Da2	8	22	12	0.9	45	From -16 to 90	Dark Grey/Green	
DFP5-a2-151-A2-FG-DG	5000	200	250	151	+9/-9	Da2	8	Da2	8	27	14	0.9	45	From -16 to 90	Dark Grey/Green	
DFP6-a2-151-A2-FG-DG	8000	250	320	151	+9/-9	Da2	8	Da2	8	32	18	0.9	45	From -16 to 90	Dark Grey/Green	
DFP7-a2-151-A2-FG-DG	12000	300	400	151	+10/-10	Da2	8	Da2	8	32	18	0.9	45	From -16 to 90	Dark Grey/Green	
DFP8-a2-151-A2-FG-DG	20000	400	500	151	+10/-10	Da2	8	Da2	8	39	22	0.9	45	From -16 to 90	Dark Grey/Green	



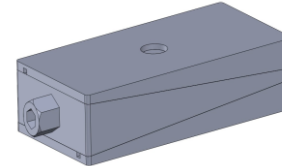
DFP1



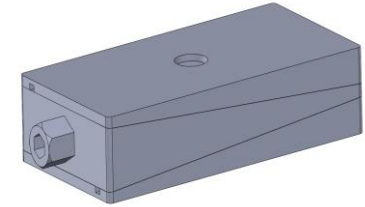
DFP3



DFP5



DFP7



DFP8

Model	Load Kg/pc	Length (L) mm	Width (B) mm	Height (H) at mean position (mm)	Adjustment range (mm)	Bottom pad Type	Bottom pad Thickness (mm)	Top pad Type	Top pad Thickness (mm)	SW1 (mm)	SW2 (mm)	Coeff. of Friction against Concrete	Natural Frequency at Max. Load (Hz)	Temperature Range (°C)	Color	Applications
DFP1-135-FG-DG	1200	105	55	135	+4/-4	X	X	X	X	16	8	X	X	From -16 to 90	Dark Grey/Green	Applications : For levelling of all Precision Machines.
DFP2-135-FG-DG	3000	150	75	135	+5/-5	X	X	X	X	19	10	X	X	From -16 to 90	Dark Grey/Green	
DFP3-135-FG-DG	5000	200	100	135	+5/-5	X	X	X	X	22	12	X	X	From -16 to 90	Dark Grey/Green	
DFP4-135-FG-DG	10400	200	200	135	+6/-6	X	X	X	X	22	12	X	X	From -16 to 90	Dark Grey/Green	
DFP5-135-FG-DG	13000	200	250	135	+9/-9	X	X	X	X	27	14	X	X	From -16 to 90	Dark Grey/Green	
DFP6-135-FG-DG	20000	250	320	135	+9/-9	X	X	X	X	32	18	X	X	From -16 to 90	Dark Grey/Green	
DFP7-135-FG-DG	30000	300	400	135	+10/-10	X	X	X	X	32	18	X	X	From -16 to 90	Dark Grey/Green	
DFP8-135-FG-DG	40000	400	500	135	+10/-10	X	X	X	X	39	22	X	X	From -16 to 90	Dark Grey/Green	