

DBP0



DBP2



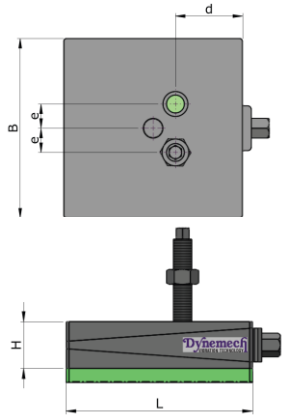
DBP4



DBP6

Dynemecf Wedge mounts, Series DBP-100 have a height of 100mm at mean position to help proper cleaning and repairing under the machines, with specs similar to series DB.

Model	Load Capacity Kg/pc	Length (L) mm	Width (B) mm	Height (H) at mean position (mm)	d (mm)	e (mm)	Bolt Size (mm)	Adjustment Range (mm)	Bottom pad Type	Bottom pad Thickness (mm)	SW1 (mm)	SW2 (mm)	Coeff. of Friction against Concrete	Natural Frequency at Max. Load (Hz)	Temperature Range (°C)	Color	Applications
DBP0-u-100-FG-M12x1.75x150-S-Z-8-DG	900	100	100	100	42	23	M12	+3/-3	Du	15	19	10	0.9	18	From -16 to 90	Dark Grey/Green	Applications: Tool Room Machines, Plastic Injection Moulding Machines, Pressure Die Casting Machines, Shaper, Printing and Textile Machines etc.
DBP1-u-100-FG-M16x1.75x150-S-Z-8-DG	1100	115	115	100	50	24	M16	+4/-4	Du	15	19	10	0.9	18	From -16 to 90	Dark Grey/Green	
DBP2-u-100-FG-M18x2.5x150-S-Z-8-DG	1800	150	150	100	60	23	M18	+5/-5	Du	15	22	12	0.9	18	From -16 to 90	Dark Grey/Green	
DBP3-u-100-FG-M20x2.5x150-S-Z-8-DG	3200	200	200	100	75	27	M20	+6/-6	Du	15	22	12	0.9	18	From -16 to 90	Dark Grey/Green	
DBP4-u-100-FG-M20x2.5x200-S-Z-8-DG	4000	200	250	100	95	27	M20	+9/-9	Du	15	27	14	0.9	18	From -16 to 90	Dark Grey/Green	
DBP5-u-100-FG-M24x3.0x200-S-Z-8-DG	6400	250	320	100	125	55	M24	+9/-9	Du	15	32	18	0.9	18	From -16 to 90	Dark Grey/Green	
DBP6-u-100-FG-M24x3.0x200-S-Z-8-DG	9600	300	400	100	148	50	M24	+10/-10	Du	15	32	18	0.9	18	From -16 to 90	Dark Grey/Green	
DBP7-u-100-FG-M24x3.0x200-S-Z-8-DG	16000	400	500	100	200	70	M24	+10/-10	Du	15	39	22	0.9	18	From -16 to 90	Dark Grey/Green	Applications: Tool Room Machines, Plastic Injection Moulding Machines, Pressure Die Casting Machines, Shaper, Printing and Textile Machines etc.
DBP0-u-10-95-FG-M12x1.75x150-S-Z-8-DG	900	100	100	95	42	23	M12	+3/-3	Du-10	10	19	10	0.9	25	From -16 to 90	Dark Grey/Green	
DBP1-u-10-95-FG-M16x1.75x150-S-Z-8-DG	1100	115	115	95	50	24	M16	+4/-4	Du-10	10	19	10	0.9	25	From -16 to 90	Dark Grey/Green	
DBP2-u-10-95-FG-M18x2.5x150-S-Z-8-DG	1800	150	150	95	60	23	M18	+5/-5	Du-10	10	22	12	0.9	25	From -16 to 90	Dark Grey/Green	
DBP3-u-10-95-FG-M20x2.5x150-S-Z-8-DG	3200	200	200	95	75	27	M20	+6/-6	Du-10	10	22	12	0.9	25	From -16 to 90	Dark Grey/Green	
DBP4-u-10-95-FG-M20x2.5x200-S-Z-8-DG	4000	200	250	95	95	27	M20	+9/-9	Du-10	10	27	14	0.9	25	From -16 to 90	Dark Grey/Green	
DBP5-u-10-95-FG-M24x3.0x200-S-Z-8-DG	6400	250	320	95	125	55	M24	+9/-9	Du-10	10	32	18	0.9	25	From -16 to 90	Dark Grey/Green	
DBP6-u-10-95-FG-M24x3.0x200-S-Z-8-DG	9600	300	400	95	148	50	M24	+10/-10	Du-10	10	32	18	0.9	25	From -16 to 90	Dark Grey/Green	Applications: Tool Room Machines, Plastic Injection Moulding Machines, Pressure Die Casting Machines, Shaper, Printing and Textile Machines etc.
DBP7-u-10-95-FG-M24x3.0x200-S-Z-8-DG	16000	400	500	95	200	70	M24	+10/-10	Du-10	10	39	22	0.9	25	From -16 to 90	Dark Grey/Green	
DBP0-u-12-97-FG-M12x1.75x150-S-Z-8-DG	900	100	100	97	42	23	M12	+3/-3	Du-12	12	19	10	0.9	20	From -16 to 90	Dark Grey/Green	
DBP1-u-12-97-FG-M16x1.75x150-S-Z-8-DG	1100	115	115	97	50	24	M16	+4/-4	Du-12	12	19	10	0.9	20	From -16 to 90	Dark Grey/Green	
DBP2-u-12-97-FG-M18x2.5x150-S-Z-8-DG	1800	150	150	97	60	23	M18	+5/-5	Du-12	12	22	12	0.9	20	From -16 to 90	Dark Grey/Green	
DBP3-u-12-97-FG-M20x2.5x150-S-Z-8-DG	3200	200	200	97	75	27	M20	+6/-6	Du-12	12	22	12	0.9	20	From -16 to 90	Dark Grey/Green	
DBP4-u-12-97-FG-M20x2.5x200-S-Z-8-DG	4000	200	250	97	95	27	M20	+9/-9	Du-12	12	27	14	0.9	20	From -16 to 90	Dark Grey/Green	
DBP5-u-12-97-FG-M24x3.0x200-S-Z-8-DG	6400	250	320	97	125	55	M24	+9/-9	Du-12	12	32	18	0.9	20	From -16 to 90	Dark Grey/Green	
DBP6-u-12-97-FG-M24x3.0x200-S-Z-8-DG	9600	300	400	97	148	50	M24	+10/-10	Du-12	12	32	18	0.9	20	From -16 to 90	Dark Grey/Green	Applications: Tool Room Machines, Plastic Injection Moulding Machines, Pressure Die Casting Machines, Shaper, Printing and Textile Machines etc.
DBP7-u-12-97-FG-M24x3.0x200-S-Z-8-DG	16000	400	500	97	200	70	M24	+10/-10	Du-12	12	39	22	0.9	20	From -16 to 90	Dark Grey/Green	



DBP0



DBP2

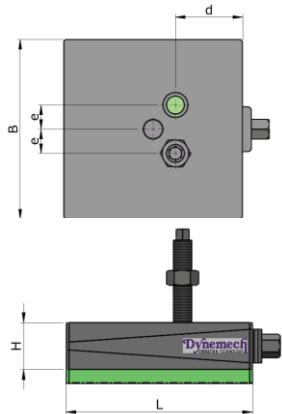


DBP4



DBP6

Model	Load Capacity Kg/pc	Length (L) mm	Width (B) mm	Height (H) at mean position (mm)	d (mm)	e (mm)	Bolt Size (mm)	Adjustment Range (mm)	Bottom pad Type	Bottom pad Thickness (mm)	SW1 (mm)	SW2 (mm)	Coeff. of Friction against Concrete	Natural Frequency at Max. Load (Hz)	Temperature Range (°C)	Color	Applications
DBP0-m-100-FG-M12x1.75x150-S-Z-8-DG	1000	100	100	100	42	23	M12	+3/-3	Dm	15	19	10	0.7	30	From -16 to 90	Dark Grey/Green	Applications: Power Presses, Stamping Machines, Shearing Machines, Punching Machines. For machines with high vertical impact.
DBP1-m-100-FG-M16x1.75x150-S-Z-8-DG	1400	115	115	100	50	24	M16	+4/-4	Dm	15	19	10	0.7	30	From -16 to 90	Dark Grey/Green	
DBP2-m-100-FG-M18x2.5x150-S-Z-8-DG	2200	150	150	100	60	23	M18	+5/-5	Dm	15	22	12	0.7	30	From -16 to 90	Dark Grey/Green	
DBP3-m-100-FG-M20x2.5x150-S-Z-8-DG	4000	200	200	100	75	27	M20	+6/-6	Dm	15	22	12	0.7	30	From -16 to 90	Dark Grey/Green	
DBP4-m-100-FG-M20x2.5x200-S-Z-8-DG	5000	200	250	100	95	27	M20	+9/-9	Dm	15	27	14	0.7	30	From -16 to 90	Dark Grey/Green	
DBP5-m-100-FG-M24x3.0x200-S-Z-8-DG	8000	250	320	100	125	55	M24	+9/-9	Dm	15	32	18	0.7	30	From -16 to 90	Dark Grey/Green	
DBP6-m-100-FG-M24x3.0x200-S-Z-8-DG	12000	300	400	100	148	50	M24	+10/-10	Dm	15	32	18	0.7	30	From -16 to 90	Dark Grey/Green	
DBP7-m-100-FG-M24x3.0x200-S-Z-8-DG	20000	400	500	100	200	70	M24	+10/-10	Dm	15	39	22	0.7	30	From -16 to 90	Dark Grey/Green	



DBP0



DBP2

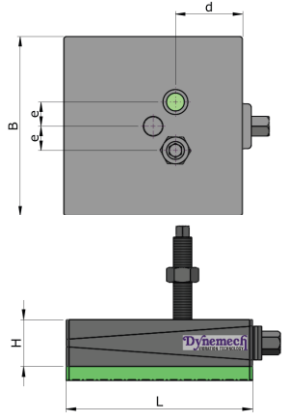


DBP4



DBP6

Model	Load Capacity Kg/pc	Length (L) mm	Width (B) mm	Height (H) at mean position (mm)	d (mm)	e (mm)	Bolt Size (mm)	Adjustment Range (mm)	Bottom pad Type	Bottom pad Thickness (mm)	SW1 (mm)	SW2 (mm)	Coeff. of Friction against Concrete	Natural Frequency at Max. Load (Hz)	Temperature Range (°C)	Color	Applications
DBP0-i-110-FG-M12x1.75x150-S-Z-8-DG	1400	100	100	110	42	23	M12	+3/-3	Di	25	19	10	0.8	7	From -16 to 90	Dark Grey/Green	Applications: Power Presses, Stamping Machines, Shearing Machines, Punching Machines. For machines with high vertical impact.
DBP1-i-110-FG-M16x1.75x150-S-Z-8-DG	1800	115	115	110	50	24	M16	+4/-4	Di	25	19	10	0.8	7	From -16 to 90	Dark Grey/Green	
DBP2-i-110-FG-M18x2.5x150-S-Z-8-DG	2900	150	150	110	60	23	M18	+5/-5	Di	25	22	12	0.8	7	From -16 to 90	Dark Grey/Green	
DBP3-i-110-FG-M20x2.5x150-S-Z-8-DG	5200	200	200	110	75	27	M20	+6/-6	Di	25	22	12	0.8	7	From -16 to 90	Dark Grey/Green	
DBP4-i-110-FG-M20x2.5x200-S-Z-8-DG	6500	200	250	110	95	27	M20	+9/-9	Di	25	27	14	0.8	7	From -16 to 90	Dark Grey/Green	
DBP5-i-110-FG-M24x3.0x200-S-Z-8-DG	10000	250	320	110	125	55	M24	+9/-9	Di	25	32	18	0.8	7	From -16 to 90	Dark Grey/Green	
DBP6-i-110-FG-M24x3.0x200-S-Z-8-DG	15000	300	400	110	148	50	M24	+10/-10	Di	25	32	18	0.8	7	From -16 to 90	Dark Grey/Green	
DBP7-i-110-FG-M24x3.0x200-S-Z-8-DG	26000	400	500	110	200	70	M24	+10/-10	Di	25	39	22	0.8	7	From -16 to 90	Dark Grey/Green	



DBP0



DBP2

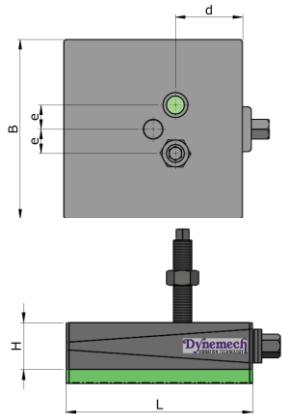


DBP4



DBP6

Model	Load Capacity Kg/pc	Length (L) mm	Width (B) mm	Height (H) at mean position (mm)	d (mm)	e (mm)	Bolt Size (mm)	Adjustment Range (mm)	Bottom pad Type	Bottom pad Thickness (mm)	SW1 (mm)	SW2 (mm)	Coeff. of Friction against Concrete	Natural Frequency at Max. Load (Hz)	Temperature Range (°C)	Color	Applications
DBP0-p1-100-FG-M12x1.75x150-S-Z-8-DG	400	100	100	100	42	23	M12	+3/-3	Dp1	15	19	10	0.8	7	From -16 to 90	Dark Grey/Green	Applications: Power Presses, Stamping Machines, Shearing Machines, Punching Machines. For machines with high vertical impact.
DBP1-p1-100-FG-M16x1.75x150-S-Z-8-DG	530	115	115	100	50	24	M16	+4/-4	Dp1	15	19	10	0.8	7	From -16 to 90	Dark Grey/Green	
DBP2-p1-100-FG-M18x2.5x150-S-Z-8-DG	900	150	150	100	60	23	M18	+5/-5	Dp1	15	22	12	0.8	7	From -16 to 90	Dark Grey/Green	
DBP3-p1-100-FG-M20x2.5x150-S-Z-8-DG	1600	200	200	100	75	27	M20	+6/-6	Dp1	15	22	12	0.8	7	From -16 to 90	Dark Grey/Green	
DBP4-p1-100-FG-M20x2.5x200-S-Z-8-DG	2000	200	250	100	95	27	M20	+9/-9	Dp1	15	27	14	0.8	7	From -16 to 90	Dark Grey/Green	
DBP5-p1-100-FG-M24x3.0x200-S-Z-8-DG	3200	250	320	100	125	55	M24	+9/-9	Dp1	15	32	18	0.8	7	From -16 to 90	Dark Grey/Green	
DBP6-p1-100-FG-M24x3.0x200-S-Z-8-DG	4800	300	400	100	148	50	M24	+10/-10	Dp1	15	32	18	0.8	7	From -16 to 90	Dark Grey/Green	
DBP7-p1-100-FG-M24x3.0x200-S-Z-8-DG	8000	400	500	100	200	70	M24	+10/-10	Dp1	15	39	22	0.8	7	From -16 to 90	Dark Grey/Green	Applications: Medium Presses, Punching Presses, Centreless Grinding Machines, Gear Shapers, High Speed Machines on upper floors.
DBP0-p2-105-FG-M12x1.75x150-S-Z-8-DG	500	100	100	105	42	23	M12	+3/-3	Dp2	20	19	10	0.8	12	From -16 to 90	Dark Grey/Green	
DBP1-p2-105-FG-M16x1.75x150-S-Z-8-DG	660	115	115	105	50	24	M16	+4/-4	Dp2	20	19	10	0.8	12	From -16 to 90	Dark Grey/Green	
DBP2-p2-105-FG-M18x2.5x150-S-Z-8-DG	1120	150	150	105	60	23	M18	+5/-5	Dp2	20	22	12	0.8	12	From -16 to 90	Dark Grey/Green	
DBP3-p2-105-FG-M20x2.5x150-S-Z-8-DG	2000	200	200	105	75	27	M20	+6/-6	Dp2	20	22	12	0.8	12	From -16 to 90	Dark Grey/Green	
DBP4-p2-105-FG-M20x2.5x200-S-Z-8-DG	2500	200	250	105	95	27	M20	+9/-9	Dp2	20	27	14	0.8	12	From -16 to 90	Dark Grey/Green	
DBP5-p2-105-FG-M24x3.0x200-S-Z-8-DG	4000	250	320	105	125	55	M24	+9/-9	Dp2	20	32	18	0.8	12	From -16 to 90	Dark Grey/Green	
DBP6-p2-105-FG-M24x3.0x200-S-Z-8-DG	6000	300	400	105	148	50	M24	+10/-10	Dp2	20	32	18	0.8	12	From -16 to 90	Dark Grey/Green	
DBP7-p2-105-FG-M24x3.0x200-S-Z-8-DG	10000	400	500	105	200	70	M24	+10/-10	Dp2	20	39	22	0.8	12	From -16 to 90	Dark Grey/Green	Applications: Tool Room Machines on suspended Floors, Light Weight Presses, Compressors etc.
DBP0-p3-109-FG-M12x1.75x150-S-Z-8-DG	600	100	100	109	42	23	M12	+3/-3	Dp3	24	19	10	0.8	7	From -16 to 90	Dark Grey/Green	
DBP1-p3-109-FG-M16x1.75x150-S-Z-8-DG	790	115	115	109	50	24	M16	+4/-4	Dp3	24	19	10	0.8	7	From -16 to 90	Dark Grey/Green	
DBP2-p3-109-FG-M18x2.5x150-S-Z-8-DG	1350	150	150	109	60	23	M18	+5/-5	Dp3	24	22	12	0.8	7	From -16 to 90	Dark Grey/Green	
DBP3-p3-109-FG-M20x2.5x150-S-Z-8-DG	2400	200	200	109	75	27	M20	+6/-6	Dp3	24	22	12	0.8	7	From -16 to 90	Dark Grey/Green	
DBP4-p3-109-FG-M20x2.5x200-S-Z-8-DG	3000	200	250	109	95	27	M20	+9/-9	Dp3	24	27	14	0.8	7	From -16 to 90	Dark Grey/Green	
DBP5-p3-109-FG-M24x3.0x200-S-Z-8-DG	4800	250	320	109	125	55	M24	+9/-9	Dp3	24	32	18	0.8	7	From -16 to 90	Dark Grey/Green	
DBP6-p3-109-FG-M24x3.0x200-S-Z-8-DG	7200	300	400	109	148	50	M24	+10/-10	Dp3	24	32	18	0.8	7	From -16 to 90	Dark Grey/Green	
DBP7-p3-109-FG-M24x3.0x200-S-Z-8-DG	12000	400	500	109	200	70	M24	+10/-10	Dp3	24	39	22	0.8	7	From -16 to 90	Dark Grey/Green	



DBP0



DBP2

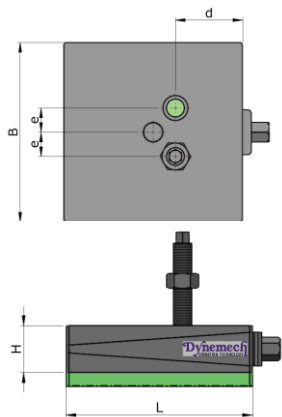


DBP4



DBP6

Model	Load Capacity Kg/pc	Length (L) mm	Width (B) mm	Height (H) at mean position (mm)	d (mm)	e (mm)	Bolt Size (mm)	Adjustment Range (mm)	Bottom pad Type	Bottom pad Thickness (mm)	SW1 (mm)	SW2 (mm)	Coeff. of Friction against Concrete	Natural Frequency at Max. Load (Hz)	Temperature Range (°C)	Color	Applications
DBP0-s1-105-FG-M12x1.75x150-S-Z-8-DG	500	100	100	105	42	23	M12	+3/-3	Ds1	20	19	10	0.8	15	From -16 to 90	Dark Grey/Green	Applications: Tool Room Machines, Plastic Injection Moulding Machines, Pressure Die Casting Machines, Shaper, Printing and Textile Machines etc.
DBP1-s1-105-FG-M16x1.75x150-S-Z-8-DG	600	115	115	105	50	24	M16	+4/-4	Ds1	20	19	10	0.8	15	From -16 to 90	Dark Grey/Green	
DBP2-s1-105-FG-M18x2.5x150-S-Z-8-DG	1000	150	150	105	60	23	M18	+5/-5	Ds1	20	22	12	0.8	15	From -16 to 90	Dark Grey/Green	
DBP3-s1-105-FG-M20x2.5x150-S-Z-8-DG	1800	200	200	105	75	27	M20	+6/-6	Ds1	20	22	12	0.8	15	From -16 to 90	Dark Grey/Green	
DBP4-s1-105-FG-M20x2.5x200-S-Z-8-DG	2200	200	250	105	95	27	M20	+9/-9	Ds1	20	27	14	0.8	15	From -16 to 90	Dark Grey/Green	
DBP5-s1-105-FG-M24x3.0x200-S-Z-8-DG	3500	250	320	105	125	55	M24	+9/-9	Ds1	20	32	18	0.8	15	From -16 to 90	Dark Grey/Green	
DBP6-s1-105-FG-M24x3.0x200-S-Z-8-DG	5200	300	400	105	148	50	M24	+10/-10	Ds1	20	32	18	0.8	15	From -16 to 90	Dark Grey/Green	
DBP7-s1-105-FG-M24x3.0x200-S-Z-8-DG	9500	400	500	105	200	70	M24	+10/-10	Ds1	20	39	22	0.8	15	From -16 to 90	Dark Grey/Green	
DBP0-s2-110-FG-M12x1.75x150-S-Z-8-DG	800	100	100	110	42	23	M12	+3/-3	Ds2	25	19	10	0.8	8	From -16 to 90	Dark Grey/Green	Applications: Power Presses, Stamping Machines, Shearing Machines, Punching Machines. For machines with high vertical impact.
DBP1-s2-110-FG-M16x1.75x150-S-Z-8-DG	950	115	115	110	50	24	M16	+4/-4	Ds2	25	19	10	0.8	8	From -16 to 90	Dark Grey/Green	
DBP2-s2-110-FG-M18x2.5x150-S-Z-8-DG	1600	150	150	110	60	23	M18	+5/-5	Ds2	25	22	12	0.8	8	From -16 to 90	Dark Grey/Green	
DBP3-s2-110-FG-M20x2.5x150-S-Z-8-DG	2800	200	200	110	75	27	M20	+6/-6	Ds2	25	22	12	0.8	8	From -16 to 90	Dark Grey/Green	
DBP4-s2-110-FG-M20x2.5x200-S-Z-8-DG	3500	200	250	110	95	27	M20	+9/-9	Ds2	25	27	14	0.8	8	From -16 to 90	Dark Grey/Green	
DBP5-s2-110-FG-M24x3.0x200-S-Z-8-DG	5500	250	320	110	125	55	M24	+9/-9	Ds2	25	32	18	0.8	8	From -16 to 90	Dark Grey/Green	
DBP6-s2-110-FG-M24x3.0x200-S-Z-8-DG	8500	300	400	110	148	50	M24	+10/-10	Ds2	25	32	18	0.8	8	From -16 to 90	Dark Grey/Green	
DBP7-s2-110-FG-M24x3.0x200-S-Z-8-DG	14000	400	500	110	200	70	M24	+10/-10	Ds2	25	39	22	0.8	8	From -16 to 90	Dark Grey/Green	



DBP0



DBP2



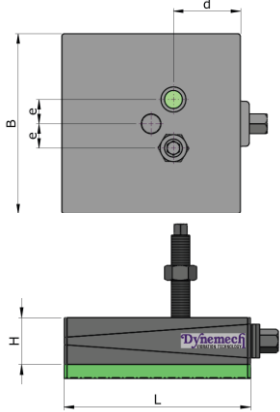
DBP4



DBP6

Model	Load Capacity Kg/pc	Length (L) mm	Width (B) mm	Height (H) at mean position (mm)	d (mm)	e (mm)	Bolt Size (mm)	Adjustment Range (mm)	Bottom pad Type	Bottom pad Thickness (mm)	SW1 (mm)	SW2 (mm)	Coeff. of Friction against Concrete	Natural Frequency at Max. Load (Hz)	Temperature Range (°C)	Color	Applications
DBP0-hs1-150-FG-M12x1.75x150-S-Z-8-DG	2000	100	100	150	42	23	M12	+3/-3	Dhs1	65	19	10	0.8	6	From -16 to 90	Dark Grey/Green	Applications : Forging Hammers, Heavy Gen Sets, Heavy Industrial machines, Test Rigs, Heavy presses etc.
DBP1-hs1-150-FG-M16x1.75x150-S-Z-8-DG	2640	115	115	150	50	24	M16	+4/-4	Dhs1	65	19	10	0.8	6	From -16 to 90	Dark Grey/Green	
DBP2-hs1-150-FG-M18x2.5x150-S-Z-8-DG	4500	150	150	150	60	23	M18	+5/-5	Dhs1	65	22	12	0.8	6	From -16 to 90	Dark Grey/Green	
DBP3-hs1-150-FG-M20x2.5x150-S-Z-8-DG	8000	200	200	150	75	27	M20	+6/-6	Dhs1	65	22	12	0.8	6	From -16 to 90	Dark Grey/Green	
DBP4-hs1-150-FG-M20x2.5x200-S-Z-8-DG	10000	200	250	150	95	27	M20	+9/-9	Dhs1	65	27	14	0.8	6	From -16 to 90	Dark Grey/Green	
DBP5-hs1-150-FG-M24x3.0x200-S-Z-8-DG	16000	250	320	150	125	55	M24	+9/-9	Dhs1	65	32	18	0.8	6	From -16 to 90	Dark Grey/Green	
DBP6-hs1-150-FG-M24x3.0x200-S-Z-8-DG	24000	300	400	150	148	50	M24	+10/-10	Dhs1	65	32	18	0.8	6	From -16 to 90	Dark Grey/Green	
DBP7-hs1-150-FG-M24x3.0x200-S-Z-8-DG	40000	400	500	150	200	70	M24	+10/-10	Dhs1	65	39	22	0.8	6	From -16 to 90	Dark Grey/Green	
DBP0-hs2-150-FG-M12x1.75x150-S-Z-8-DG	800	100	100	150	42	23	M12	+3/-3	Dhs2	65	19	10	0.8	4	From -16 to 90	Dark Grey/Green	Applications : Forging Hammers, Heavy Gen Sets, Heavy Industrial machines, Test Rigs, Heavy presses, crushers etc.
DBP1-hs2-150-FG-M16x1.75x150-S-Z-8-DG	1060	115	115	150	50	24	M16	+4/-4	Dhs2	65	19	10	0.8	4	From -16 to 90	Dark Grey/Green	
DBP2-hs2-150-FG-M18x2.5x150-S-Z-8-DG	1800	150	150	150	60	23	M18	+5/-5	Dhs2	65	22	12	0.8	4	From -16 to 90	Dark Grey/Green	
DBP3-hs2-150-FG-M20x2.5x150-S-Z-8-DG	3200	200	200	150	75	27	M20	+6/-6	Dhs2	65	22	12	0.8	4	From -16 to 90	Dark Grey/Green	
DBP4-hs2-150-FG-M20x2.5x200-S-Z-8-DG	4000	200	250	150	95	27	M20	+9/-9	Dhs2	65	27	14	0.8	4	From -16 to 90	Dark Grey/Green	
DBP5-hs2-150-FG-M24x3.0x200-S-Z-8-DG	6400	250	320	150	125	55	M24	+9/-9	Dhs2	65	32	18	0.8	4	From -16 to 90	Dark Grey/Green	
DBP6-hs2-150-FG-M24x3.0x200-S-Z-8-DG	9600	300	400	150	148	50	M24	+10/-10	Dhs2	65	32	18	0.8	4	From -16 to 90	Dark Grey/Green	
DBP7-hs2-150-FG-M24x3.0x200-S-Z-8-DG	16000	400	500	150	200	70	M24	+10/-10	Dhs2	65	39	22	0.8	4	From -16 to 90	Dark Grey/Green	
DBP0-hs3-135-FG-M12x1.75x150-S-Z-8-DG	2800	100	100	135	42	23	M12	+3/-3	Dhs3	50	19	10	0.8	7	From -16 to 90	Dark Grey/Green	Applications : Forging Hammers, Heavy Gen Sets, Heavy Industrial machines, Test Rigs, Heavy presses etc.
DBP1-hs3-135-FG-M16x1.75x150-S-Z-8-DG	3700	115	115	135	50	24	M16	+4/-4	Dhs3	50	19	10	0.8	7	From -16 to 90	Dark Grey/Green	
DBP2-hs3-135-FG-M18x2.5x150-S-Z-8-DG	6300	150	150	135	60	23	M18	+5/-5	Dhs3	50	22	12	0.8	7	From -16 to 90	Dark Grey/Green	
DBP3-hs3-135-FG-M20x2.5x150-S-Z-8-DG	11200	200	200	135	75	27	M20	+6/-6	Dhs3	50	22	12	0.8	7	From -16 to 90	Dark Grey/Green	
DBP4-hs3-135-FG-M20x2.5x200-S-Z-8-DG	14000	200	250	135	95	27	M20	+9/-9	Dhs3	50	27	14	0.8	7	From -16 to 90	Dark Grey/Green	
DBP5-hs3-135-FG-M24x3.0x200-S-Z-8-DG	22400	250	320	135	125	55	M24	+9/-9	Dhs3	50	32	18	0.8	7	From -16 to 90	Dark Grey/Green	
DBP6-hs3-135-FG-M24x3.0x200-S-Z-8-DG	33600	300	400	135	148	50	M24	+10/-10	Dhs3	50	32	18	0.8	7	From -16 to 90	Dark Grey/Green	

DBP7-hs3-135-FG-M24x3.0x200-S-Z-8-DG	56000	400	500	135	200	70	M24	+10/-10	Dhs3	50	39	22	0.8	7	From -16 to 90	Dark Grey/Green	Applications : Forging Hammers, Heavy Gen Sets, Heavy Industrial machines, Test Rigs, Heavy presses, crushers etc.
DBP0-hs4-135-FG-M12x1.75x150-S-Z-8-DG	1200	100	100	135	42	23	M12	+3/-3	Dhs4	50	19	10	0.8	5	From -16 to 90	Dark Grey/Green	
DBP1-hs4-135-FG-M16x1.75x150-S-Z-8-DG	1580	115	115	135	50	24	M16	+4/-4	Dhs4	50	19	10	0.8	5	From -16 to 90	Dark Grey/Green	
DBP2-hs4-135-FG-M18x2.5x150-S-Z-8-DG	2700	150	150	135	60	23	M18	+5/-5	Dhs4	50	22	12	0.8	5	From -16 to 90	Dark Grey/Green	
DBP3-hs4-135-FG-M20x2.5x150-S-Z-8-DG	4800	200	200	135	75	27	M20	+6/-6	Dhs4	50	22	12	0.8	5	From -16 to 90	Dark Grey/Green	
DBP4-hs4-135-FG-M20x2.5x200-S-Z-8-DG	6000	200	250	135	95	27	M20	+9/-9	Dhs4	50	27	14	0.8	5	From -16 to 90	Dark Grey/Green	
DBP5-hs4-135-FG-M24x3.0x200-S-Z-8-DG	9600	250	320	135	125	55	M24	+9/-9	Dhs4	50	32	18	0.8	5	From -16 to 90	Dark Grey/Green	
DBP6-hs4-135-FG-M24x3.0x200-S-Z-8-DG	14400	300	400	135	148	50	M24	+10/-10	Dhs4	50	32	18	0.8	5	From -16 to 90	Dark Grey/Green	
DBP7-hs4-135-FG-M24x3.0x200-S-Z-8-DG	24000	400	500	135	200	70	M24	+10/-10	Dhs4	50	39	22	0.8	5	From -16 to 90	Dark Grey/Green	
DBP0-hs5-165-FG-M12x1.75x150-S-Z-8-DG	2800	100	100	165	42	23	M12	+3/-3	Dhs5	80	19	10	0.8	5	From -16 to 90	Dark Grey/Green	
DBP1-hs5-165-FG-M16x1.75x150-S-Z-8-DG	3700	115	115	165	50	24	M16	+4/-4	Dhs5	80	19	10	0.8	5	From -16 to 90	Dark Grey/Green	
DBP2-hs5-165-FG-M18x2.5x150-S-Z-8-DG	6300	150	150	165	60	23	M18	+5/-5	Dhs5	80	22	12	0.8	5	From -16 to 90	Dark Grey/Green	
DBP3-hs5-165-FG-M20x2.5x150-S-Z-8-DG	11200	200	200	165	75	27	M20	+6/-6	Dhs5	80	22	12	0.8	5	From -16 to 90	Dark Grey/Green	
DBP4-hs5-165-FG-M20x2.5x200-S-Z-8-DG	14000	200	250	165	95	27	M20	+9/-9	Dhs5	80	27	14	0.8	5	From -16 to 90	Dark Grey/Green	
DBP5-hs5-165-FG-M24x3.0x200-S-Z-8-DG	22400	250	320	165	125	55	M24	+9/-9	Dhs5	80	32	18	0.8	5	From -16 to 90	Dark Grey/Green	
DBP6-hs5-165-FG-M24x3.0x200-S-Z-8-DG	33600	300	400	165	148	50	M24	+10/-10	Dhs5	80	32	18	0.8	5	From -16 to 90	Dark Grey/Green	
DBP7-hs5-165-FG-M24x3.0x200-S-Z-8-DG	56000	400	500	165	200	70	M24	+10/-10	Dhs5	80	39	22	0.8	5	From -16 to 90	Dark Grey/Green	



DBP0



DBP2

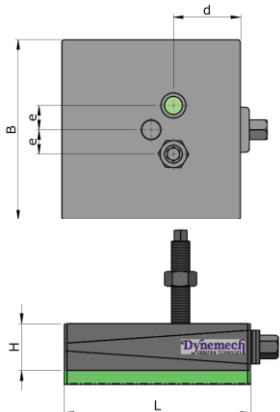


DBP4



DBP6

Model	Load Capacity Kg/pc	Length (L) mm	Width (B) mm	Height (H) at mean position (mm)	d (mm)	e (mm)	Bolt Size (mm)	Adjustment Range (mm)	Bottom pad Type	Bottom pad Thickness (mm)	SW1 (mm)	SW2 (mm)	Coeff. of Friction against Concrete	Natural Frequency at Max. Load (Hz)	Temperature Range (°C)	Color	Applications
DBP0-h-100-FG-M12x1.75x150-S-Z-8-DG	3000	100	100	100	42	23	M12	+3/-3	Dh	15	19	10	0.6	45	From -16 to 90	Dark Grey/Green	Applications : Very Heavy and long bed machines, long machining centres, planners etc.
DBP1-h-100-FG-M16x1.75x150-S-Z-8-DG	3970	115	115	100	50	24	M16	+4/-4	Dh	15	19	10	0.6	45	From -16 to 90	Dark Grey/Green	
DBP2-h-100-FG-M18x2.5x150-S-Z-8-DG	6750	150	150	100	60	23	M18	+5/-5	Dh	15	22	12	0.6	45	From -16 to 90	Dark Grey/Green	
DBP3-h-100-FG-M20x2.5x150-S-Z-8-DG	12000	200	200	100	75	27	M20	+6/-6	Dh	15	22	12	0.6	45	From -16 to 90	Dark Grey/Green	
DBP4-h-100-FG-M20x2.5x200-S-Z-8-DG	15000	200	250	100	95	27	M20	+9/-9	Dh	15	27	14	0.6	45	From -16 to 90	Dark Grey/Green	
DBP5-h-100-FG-M24x3.0x200-S-Z-8-DG	24000	250	320	100	125	55	M24	+9/-9	Dh	15	32	18	0.6	45	From -16 to 90	Dark Grey/Green	
DBP6-h-100-FG-M24x3.0x200-S-Z-8-DG	36000	300	400	100	148	50	M24	+10/-10	Dh	15	32	18	0.6	45	From -16 to 90	Dark Grey/Green	
DBP7-h-100-FG-M24x3.0x200-S-Z-8-DG	60000	400	500	100	200	70	M24	+10/-10	Dh	15	39	22	0.6	45	From -16 to 90	Dark Grey/Green	



DBP0



DBP2

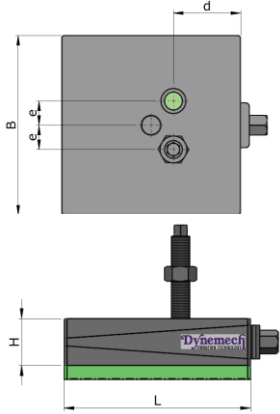


DBP4



DBP6

Model	Load Capacity Kg/pc	Length (L) mm	Width (B) mm	Height (H) at mean position (mm)	d (mm)	e (mm)	Bolt Size (mm)	Adjustment Range (mm)	Bottom pad Type	Bottom pad Thickness (mm)	SW1 (mm)	SW2 (mm)	Coeff. of Friction against Concrete	Natural Frequency at Max. Load (Hz)	Temperature Range (°C)	Color	Applications
DBP0-a1-87-FG-M12x1.75x150-S-Z-8-DG	1800	100	100	87	42	23	M12	+3/-3	Da1	2	19	10	0.8	70	From -16 to 90	Dark Grey/Green	
DBP1-a1-87-FG-M16x1.75x150-S-Z-8-DG	2300	115	115	87	50	24	M16	+4/-4	Da1	2	19	10	0.8	70	From -16 to 90	Dark Grey/Green	
DBP2-a1-87-FG-M18x2.5x150-S-Z-8-DG	4000	150	150	87	60	23	M18	+5/-5	Da1	2	22	12	0.8	70	From -16 to 90	Dark Grey/Green	
DBP3-a1-87-FG-M20x2.5x150-S-Z-8-DG	7200	200	200	87	75	27	M20	+6/-6	Da1	2	22	12	0.8	70	From -16 to 90	Dark Grey/Green	
DBP4-a1-87-FG-M20x2.5x200-S-Z-8-DG	9000	200	250	87	95	27	M20	+9/-9	Da1	2	27	14	0.8	70	From -16 to 90	Dark Grey/Green	
DBP5-a1-87-FG-M24x3.0x200-S-Z-8-DG	14400	250	320	87	125	55	M24	+9/-9	Da1	2	32	18	0.8	70	From -16 to 90	Dark Grey/Green	
DBP6-a1-87-FG-M24x3.0x200-S-Z-8-DG	21600	300	400	87	148	50	M24	+10/-10	Da1	2	32	18	0.8	70	From -16 to 90	Dark Grey/Green	
DBP7-a1-87-FG-M24x3.0x200-S-Z-8-DG	36000	400	500	87	200	70	M24	+10/-10	Da1	2	39	22	0.8	70	From -16 to 90	Dark Grey/Green	



DBP0



DBP2

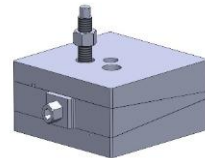
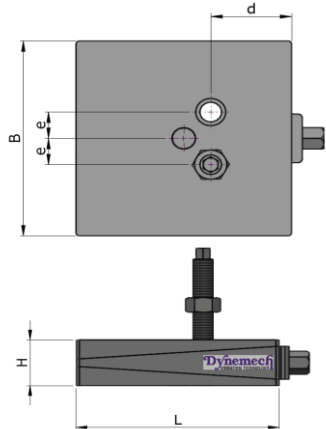


DBP4

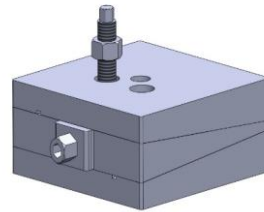


DBP6

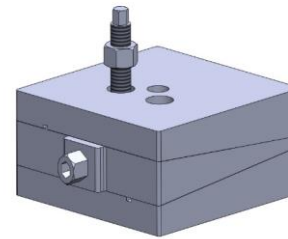
Model	Load Capacity Kg/pc	Length (L) mm	Width (B) mm	Height (H) at mean position (mm)	d (mm)	e (mm)	Bolt Size (mm)	Adjustment Range (mm)	Bottom pad Type	Bottom pad Thickness (mm)	SW1 (mm)	SW2 (mm)	Coeff. of Friction against Concrete	Natural Frequency at Max. Load (Hz)	Temperature Range (°C)	Color	Applications
DBP0-a2-93-FG-M12x1.75x150-S-Z-8-DG	1000	100	100	93	42	23	M12	+3/-3	Da2	8	19	10	0.9	45	From -16 to 90	Dark Grey/Green	
DBP1-a2-93-FG-M16x1.75x150-S-Z-8-DG	1300	115	115	93	50	24	M16	+4/-4	Da2	8	19	10	0.9	45	From -16 to 90	Dark Grey/Green	
DBP2-a2-93-FG-M18x2.5x150-S-Z-8-DG	2250	150	150	93	60	23	M18	+5/-5	Da2	8	22	12	0.9	45	From -16 to 90	Dark Grey/Green	
DBP3-a2-93-FG-M20x2.5x150-S-Z-8-DG	4000	200	200	93	75	27	M20	+6/-6	Da2	8	22	12	0.9	45	From -16 to 90	Dark Grey/Green	
DBP4-a2-93-FG-M20x2.5x200-S-Z-8-DG	5000	200	250	93	95	27	M20	+9/-9	Da2	8	27	14	0.9	45	From -16 to 90	Dark Grey/Green	
DBP5-a2-93-FG-M24x3.0x200-S-Z-8-DG	8000	250	320	93	125	55	M24	+9/-9	Da2	8	32	18	0.9	45	From -16 to 90	Dark Grey/Green	
DBP6-a2-93-FG-M24x3.0x200-S-Z-8-DG	12000	300	400	93	148	50	M24	+10/-10	Da2	8	32	18	0.9	45	From -16 to 90	Dark Grey/Green	
DBP7-a2-93-FG-M24x3.0x200-S-Z-8-DG	20000	400	500	93	200	70	M24	+10/-10	Da2	8	39	22	0.9	45	From -16 to 90	Dark Grey/Green	



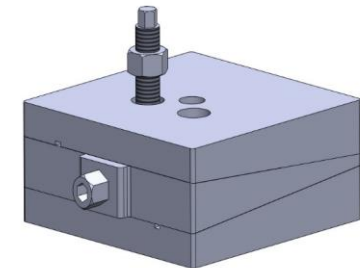
DBP0



DBP2



DBP4



DBP6

Model	Load Capacity Kg/pc	Length (L) mm	Width (B) mm	Height (H) at mean position (mm)	d (mm)	e (mm)	Bolt Size (mm)	Adjustment Range (mm)	Bottom pad Type	Bottom pad Thickness (mm)	SW1 (mm)	SW2 (mm)	Coeff. of Friction against Concrete	Natural Frequency at Max. Load (Hz)	Temperature Range (°C)	Color	Applications
DBP0-85-FG-M12x1.75x150-S-Z-8-DG	2600	100	100	85	42	23	M12	+3/-3	X	X	19	10	X	X	From -16 to 90	Dark Grey/Green	Applications : For levelling of all Precicion Machines.
DBP1-85-FG-M16x1.75x150-S-Z-8-DG	3600	115	115	85	50	24	M16	+4/-4	X	X	19	10	X	X	From -16 to 90	Dark Grey/Green	
DBP2-85-FG-M18x2.5x150-S-Z-8-DG	5800	150	150	85	60	23	M18	+5/-5	X	X	22	12	X	X	From -16 to 90	Dark Grey/Green	
DBP3-85-FG-M20x2.5x150-S-Z-8-DG	10400	200	200	85	75	27	M20	+6/-6	X	X	22	12	X	X	From -16 to 90	Dark Grey/Green	
DBP4-85-FG-M20x2.5x200-S-Z-8-DG	13000	200	250	85	95	27	M20	+9/-9	X	X	27	14	X	X	From -16 to 90	Dark Grey/Green	
DBP5-85-FG-M24x3.0x200-S-Z-8-DG	20000	250	320	85	125	55	M24	+9/-9	X	X	32	18	X	X	From -16 to 90	Dark Grey/Green	
DBP6-85-FG-M24x3.0x200-S-Z-8-DG	30000	300	400	85	148	50	M24	+10/-10	X	X	32	18	X	X	From -16 to 90	Dark Grey/Green	
DBP7-85-FG-M24x3.0x200-S-Z-8-DG	52000	400	500	85	160	70	M24	+10/-10	X	X	39	22	X	X	From -16 to 90	Dark Grey/Green	