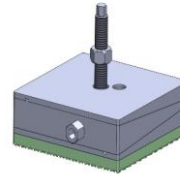
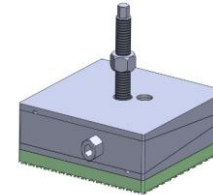


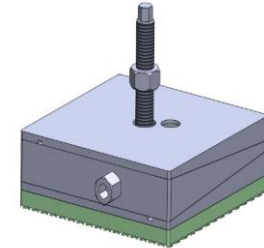
DBOP1



DBOP3



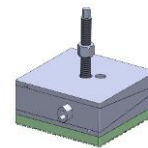
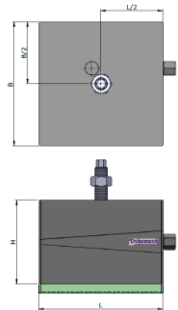
DBOP5



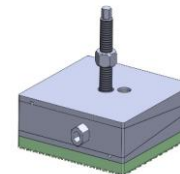
DBOP7

Dynemech Wedge mounts, Series DBOP-100 are designed for industrial machine tools that require precision levelling, vibration reduction, and/or need to be firmly mounted with the isolator.

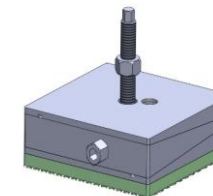
Model	Load Capacity Kg/pc	Length (L) mm	Width (B) mm	d (mm)	Height (H) at mean position (mm)	BOLT SIZE (mm)	Adjust ment Range (mm)	Bottom pad Type	Bottom pad Thickness (mm)	SW1 (mm)	SW2 (mm)	Coeff. of Friction against Concrete	Natural Frequency at Max. Load (Hz)	Temperature Range (°C)	Color	Applications
DBOP1-u-100-FG-S-Z-GR	1100	115	115	57.5	100	M16/18/20/22/24	+4/-4	Du	15	19	10	0.9	18	From -16 to 90	Dark Grey/Green	Applications: Tool Room Machines, Plastic Injection Moulding Machines, Pressure Die Casting Machines, Shaper, Printing and Textile Machines etc.
DBOP2-u-100-FG-S-Z-GR	1800	150	150	75	100	M16/18/20/22/24	+5/-5	Du	15	22	12	0.9	18	From -16 to 90	Dark Grey/Green	
DBOP3-u-100-FG-S-Z-GR	3200	200	200	100	100	M16/18/20/22/24	+6/-6	Du	15	22	12	0.9	18	From -16 to 90	Dark Grey/Green	
DBOP4-u-100-FG-S-Z-GR	4000	200	250	100	100	M16/18/20/22/24	+9/-9	Du	15	27	14	0.9	18	From -16 to 90	Dark Grey/Green	
DBOP5-u-100-FG-S-Z-GR	6400	250	320	125	100	M16/18/20/22/24	+9/-9	Du	15	32	18	0.9	18	From -16 to 90	Dark Grey/Green	
DBOP6-u-100-FG-S-Z-GR	9600	300	400	150	100	M16/18/20/22/24	+10/-10	Du	15	32	18	0.9	18	From -16 to 90	Dark Grey/Green	
DBOP7-u-100-FG-S-Z-GR	16000	400	500	200	100	M16/18/20/22/24	+10/-10	Du	15	39	22	0.9	18	From -16 to 90	Dark Grey/Green	
DBOP1-u-10-95-FG-S-Z-GR	1100	115	115	57.5	95	M16/18/20/22/24	+4/-4	Du-10	10	19	10	0.9	25	From -16 to 90	Dark Grey/Green	Applications: Tool Room Machines, Plastic Injection Moulding Machines, Pressure Die Casting Machines, Shaper, Printing and Textile Machines etc.
DBOP2-u-10-95-FG-S-Z-GR	1800	150	150	75	95	M16/18/20/22/24	+5/-5	Du-10	10	22	12	0.9	25	From -16 to 90	Dark Grey/Green	
DBOP3-u-10-95-FG-S-Z-GR	3200	200	200	100	95	M16/18/20/22/24	+6/-6	Du-10	10	22	12	0.9	25	From -16 to 90	Dark Grey/Green	
DBOP4-u-10-95-FG-S-Z-GR	4000	200	250	100	95	M16/18/20/22/24	+9/-9	Du-10	10	27	14	0.9	25	From -16 to 90	Dark Grey/Green	
DBOP5-u-10-95-FG-S-Z-GR	6400	250	320	125	95	M16/18/20/22/24	+9/-9	Du-10	10	32	18	0.9	25	From -16 to 90	Dark Grey/Green	
DBOP6-u-10-95-FG-S-Z-GR	9600	300	400	150	95	M16/18/20/22/24	+10/-10	Du-10	10	32	18	0.9	25	From -16 to 90	Dark Grey/Green	
DBOP7-u-10-95-FG-S-Z-GR	16000	400	500	200	95	M16/18/20/22/24	+10/-10	Du-10	10	39	22	0.9	25	From -16 to 90	Dark Grey/Green	
DBOP1-u-12-97-FG-S-Z-GR	1100	115	115	57.5	97	M16/18/20/22/24	+4/-4	Du-12	12	19	10	0.9	20	From -16 to 90	Dark Grey/Green	Applications: Tool Room Machines, Plastic Injection Moulding Machines, Pressure Die Casting Machines, Shaper, Printing and Textile Machines etc.
DBOP2-u-12-97-FG-S-Z-GR	1800	150	150	75	97	M16/18/20/22/24	+5/-5	Du-12	12	22	12	0.9	20	From -16 to 90	Dark Grey/Green	
DBOP3-u-12-97-FG-S-Z-GR	3200	200	200	100	97	M16/18/20/22/24	+6/-6	Du-12	12	22	12	0.9	20	From -16 to 90	Dark Grey/Green	
DBOP4-u-12-97-FG-S-Z-GR	4000	200	250	100	97	M16/18/20/22/24	+9/-9	Du-12	12	27	14	0.9	20	From -16 to 90	Dark Grey/Green	
DBOP5-u-12-97-FG-S-Z-GR	6400	250	320	125	97	M16/18/20/22/24	+9/-9	Du-12	12	32	18	0.9	20	From -16 to 90	Dark Grey/Green	
DBOP6-u-12-97-FG-S-Z-GR	9600	300	400	150	97	M16/18/20/22/24	+10/-10	Du-12	12	32	18	0.9	20	From -16 to 90	Dark Grey/Green	
DBOP7-u-12-97-FG-S-Z-GR	16000	400	500	200	97	M16/18/20/22/24	+10/-10	Du-12	12	39	22	0.9	20	From -16 to 90	Dark Grey/Green	



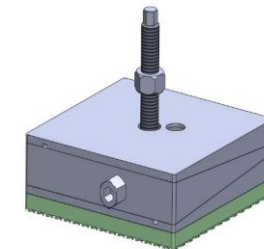
DBOP1



DBOP3

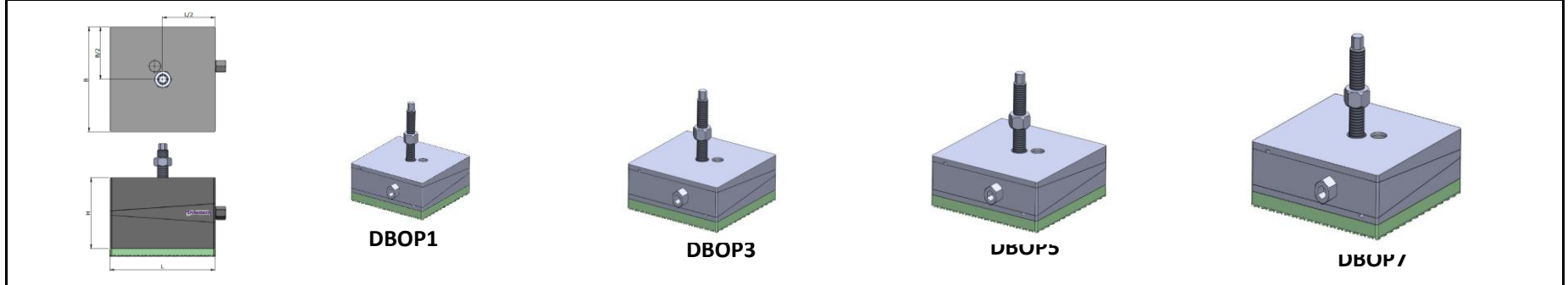


DBOP5

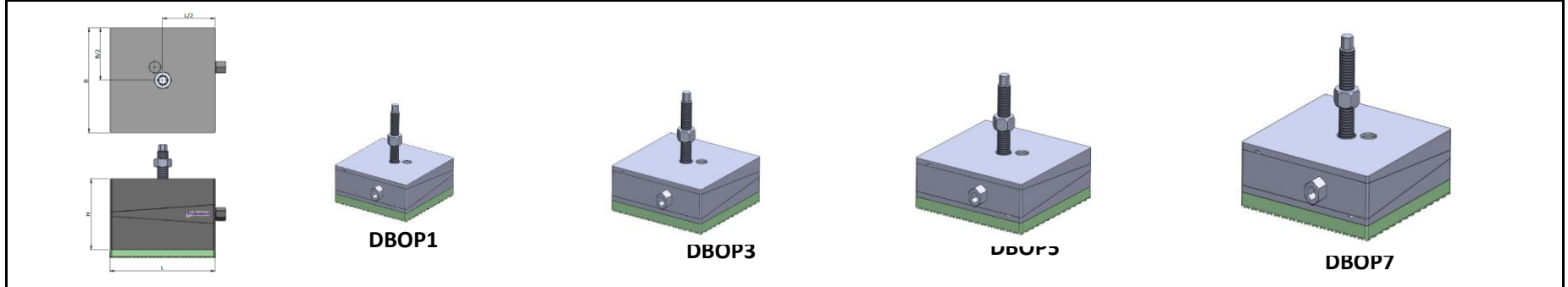


DBOP7

Model	Load Capacity Kg/pc	Length (L) mm	Width (B) mm	d (mm)	Height (H) at mean position (mm)	BOLT SIZE (mm)	Adjustment Range (mm)	Bottom pad Type	Bottom pad Thickness (mm)	SW1 (mm)	SW2 (mm)	Coeff. of Friction against Concrete	Natural Frequency at Max. Load (Hz)	Temperature Range (°C)	Color	Applications
DBOP1-m-100-FG-S-Z-GR	1400	115	115	57.5	100	M16/18/20/22/24	+4/-4	Dm	15	19	10	0.7	30	From -16 to 90	Dark Grey/Green	Applications: Power Presses, Stamping Machines, Shearing Machines, Punching Machines. For machines with high vertical impact.
DBOP2-m-100-FG-S-Z-GR	2200	150	150	75	100	M16/18/20/22/24	+5/-5	Dm	15	22	12	0.7	30	From -16 to 90	Dark Grey/Green	
DBOP3-m-100-FG-S-Z-GR	4000	200	200	100	100	M16/18/20/22/24	+6/-6	Dm	15	22	12	0.7	30	From -16 to 90	Dark Grey/Green	
DBOP4-m-100-FG-S-Z-GR	5000	200	250	100	100	M16/18/20/22/24	+9/-9	Dm	15	27	14	0.7	30	From -16 to 90	Dark Grey/Green	
DBOP5-m-100-FG-S-Z-GR	8000	250	320	125	100	M16/18/20/22/24	+9/-9	Dm	15	32	18	0.7	30	From -16 to 90	Dark Grey/Green	
DBOP6-m-100-FG-S-Z-GR	12000	300	400	150	100	M16/18/20/22/24	+10/-10	Dm	15	32	18	0.7	30	From -16 to 90	Dark Grey/Green	
DBOP7-m-100-FG-S-Z-GR	20000	400	500	200	100	M16/18/20/22/24	+10/-10	Dm	15	39	22	0.7	30	From -16 to 90	Dark Grey/Green	

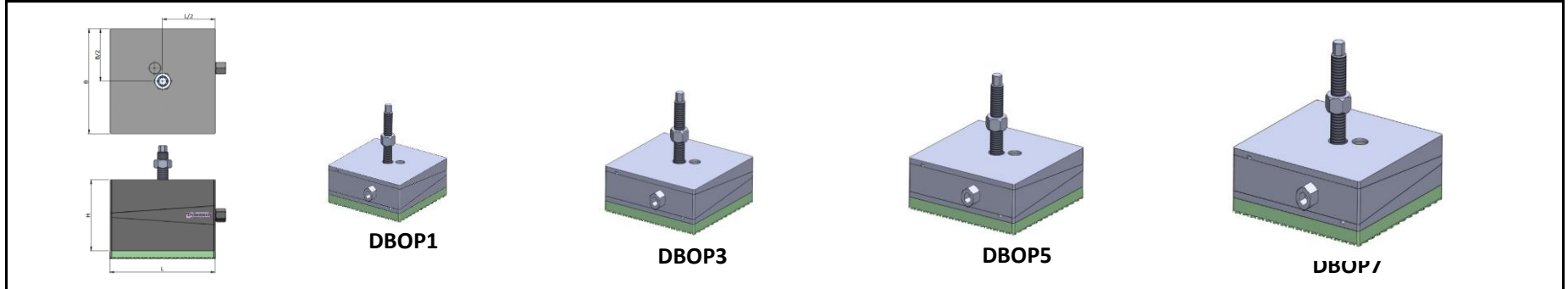


Model	Load Capacity Kg/pc	Length (L) mm	Width (B) mm	d (mm)	Height (H) at mean position (mm)	BOLT SIZE (mm)	Adjustment Range (mm)	Bottom pad Type	Bottom pad Thickness (mm)	SW1 (mm)	SW2 (mm)	Coeff. of Friction against Concrete	Natural Frequency at Max. Load (Hz)	Temperature Range (°C)	Color	Applications
DBOP1-i-110-FG-S-Z-GR	1800	115	115	57.5	110	M16/18/20/22/24	+4/-4	Di	25	19	10	0.8	7	From -16 to 90	Dark Grey/Green	Applications: Power Presses, Stamping Machines, Shearing Machines, Punching Machines. For machines with high vertical impact.
DBOP2-i-110-FG-S-Z-GR	2900	150	150	75	110	M16/18/20/22/24	+5/-5	Di	25	22	12	0.8	7	From -16 to 90	Dark Grey/Green	
DBOP3-i-110-FG-S-Z-GR	5200	200	200	100	110	M16/18/20/22/24	+6/-6	Di	25	22	12	0.8	7	From -16 to 90	Dark Grey/Green	
DBOP4-i-110-FG-S-Z-GR	6500	200	250	100	110	M16/18/20/22/24	+9/-9	Di	25	27	14	0.8	7	From -16 to 90	Dark Grey/Green	
DBOP5-i-110-FG-S-Z-GR	10000	250	320	125	110	M16/18/20/22/24	+9/-9	Di	25	32	18	0.8	7	From -16 to 90	Dark Grey/Green	
DBOP6-i-110-FG-S-Z-GR	15000	300	400	150	110	M16/18/20/22/24	+10/-10	Di	25	32	18	0.8	7	From -16 to 90	Dark Grey/Green	
DBOP7-i-110-FG-S-Z-GR	26000	400	500	200	110	M16/18/20/22/24	+10/-10	Di	25	39	22	0.8	7	From -16 to 90	Dark Grey/Green	

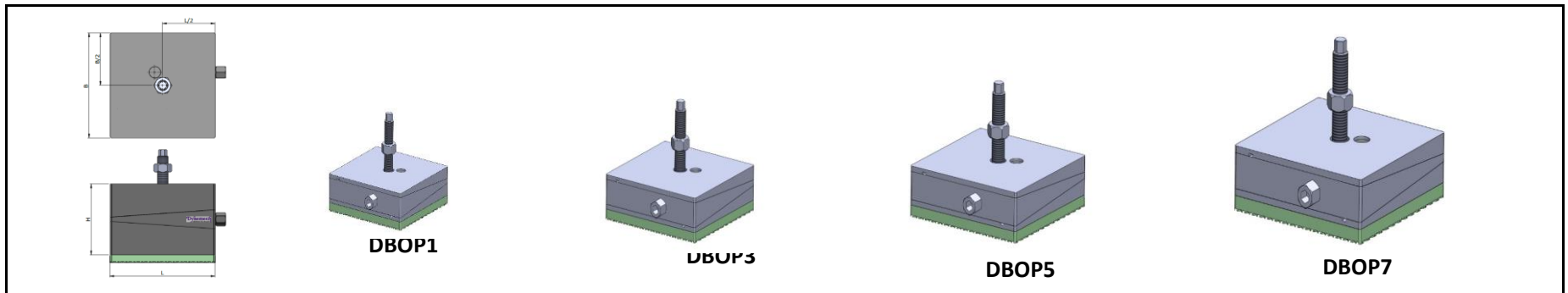


Model	Load Capacity Kg/pc	Length (L) mm	Width (B) mm	d (mm)	Height (H) at mean position (mm)	BOLT SIZE (mm)	Adjustment Range (mm)	Bottom pad Type	Bottom pad Thickness (mm)	SW1 (mm)	SW2 (mm)	Coeff. of Friction against Concrete	Natural Frequency at Max. Load (Hz)	Temperature Range (°C)	Color	Applications
DBOP1-p1-100-FG-S-Z-GR	530	115	115	57.5	100	M16/18/20/22/24	+4/-4	Dp1	15	19	10	0.8	7	From -16 to 90	Dark Grey/Green	Applications: Power Presses,
DBOP2-p1-100-FG-S-Z-GR	900	150	150	75	100	M16/18/20/22/24	+5/-5	Dp1	15	22	12	0.8	7	From -16 to 90	Dark Grey/Green	

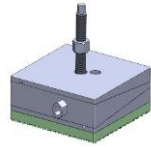
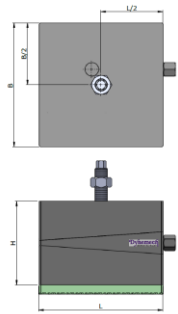
DBOP3-p1-100-FG-S-Z-GR	1600	200	200	100	100	M16/18/20/22/24	+6/-6	Dp1	15	22	12	0.8	7	From -16 to 90	Dark Grey/Green	Stamping Machines, Shearing Machines, Punching Machines. For machines with high vertical impact.	
DBOP4-p1-100-FG-S-Z-GR	2000	200	250	100	100	M16/18/20/22/24	+9/-9	Dp1	15	27	14	0.8	7	From -16 to 90	Dark Grey/Green		
DBOP5-p1-100-FG-S-Z-GR	3200	250	320	125	100	M16/18/20/22/24	+9/-9	Dp1	15	32	18	0.8	7	From -16 to 90	Dark Grey/Green		
DBOP6-p1-100-FG-S-Z-GR	4800	300	400	150	100	M16/18/20/22/24	+10/-10	Dp1	15	32	18	0.8	7	From -16 to 90	Dark Grey/Green		
DBOP7-p1-100-FG-S-Z-GR	8000	400	500	200	100	M16/18/20/22/24	+10/-10	Dp1	15	39	22	0.8	7	From -16 to 90	Dark Grey/Green		
DBOP1-p2-105-FG-S-Z-GR	660	115	115	57.5	105	M16/18/20/22/24	+4/-4	Dp2	20	19	10	0.8	12	From -16 to 90	Dark Grey/Green		Applications: Medium Presses, Punching Presses, Centreless Grinding Machines, Gear Shapers, High Speed Machines on upper floors.
DBOP2-p2-105-FG-S-Z-GR	1130	150	150	75	105	M16/18/20/22/24	+5/-5	Dp2	20	22	12	0.8	12	From -16 to 90	Dark Grey/Green		
DBOP3-p2-105-FG-S-Z-GR	2000	200	200	100	105	M16/18/20/22/24	+6/-6	Dp2	20	22	12	0.8	12	From -16 to 90	Dark Grey/Green		
DBOP4-p2-105-FG-S-Z-GR	2500	200	250	100	105	M16/18/20/22/24	+9/-9	Dp2	20	27	14	0.8	12	From -16 to 90	Dark Grey/Green		
DBOP5-p2-105-FG-S-Z-GR	4000	250	320	125	105	M16/18/20/22/24	+9/-9	Dp2	20	32	18	0.8	12	From -16 to 90	Dark Grey/Green		
DBOP6-p2-105-FG-S-Z-GR	6000	300	400	150	105	M16/18/20/22/24	+10/-10	Dp2	20	32	18	0.8	12	From -16 to 90	Dark Grey/Green		
DBOP7-p2-105-FG-S-Z-GR	10000	400	500	200	105	M16/18/20/22/24	+10/-10	Dp2	20	39	22	0.8	12	From -16 to 90	Dark Grey/Green		
DBOP1-p3-109-FG-S-Z-GR	790	115	115	57.5	109	M16/18/20/22/24	+4/-4	Dp3	24	19	10	0.8	7	From -16 to 90	Dark Grey/Green	Applications: Tool Room Machines on suspended Floors, Light Weight Presses, Compressors etc.	
DBOP2-p3-109-FG-S-Z-GR	1350	150	150	75	109	M16/18/20/22/24	+5/-5	Dp3	24	22	12	0.8	7	From -16 to 90	Dark Grey/Green		
DBOP3-p3-109-FG-S-Z-GR	2400	200	200	100	109	M16/18/20/22/24	+6/-6	Dp3	24	22	12	0.8	7	From -16 to 90	Dark Grey/Green		
DBOP4-p3-109-FG-S-Z-GR	3000	200	250	100	109	M16/18/20/22/24	+9/-9	Dp3	24	27	14	0.8	7	From -16 to 90	Dark Grey/Green		
DBOP5-p3-109-FG-S-Z-GR	4800	250	320	125	109	M16/18/20/22/24	+9/-9	Dp3	24	32	18	0.8	7	From -16 to 90	Dark Grey/Green		
DBOP6-p3-109-FG-S-Z-GR	7200	300	400	150	109	M16/18/20/22/24	+10/-10	Dp3	24	32	18	0.8	7	From -16 to 90	Dark Grey/Green		
DBOP7-p3-109-FG-S-Z-GR	12000	400	500	200	109	M16/18/20/22/24	+10/-10	Dp3	24	39	22	0.8	7	From -16 to 90	Dark Grey/Green		



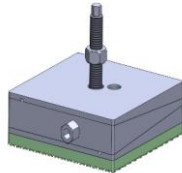
Model	Load Capacity Kg/pc	Length (L) mm	Width (B) mm	d (mm)	Height (H) at mean position (mm)	BOLT SIZE (mm)	Adjust ment Range (mm)	Bottom pad Type	Bottom pad Thickness (mm)	SW1 (mm)	SW2 (mm)	Coeff. of Friction against Concrete	Natural Frequency at Max. Load (Hz)	Temperature Range (°C)	Color	Applications
DBOP1-s1-105-FG-S-Z-GR	660	115	115	57.5	105	M16/18/20/22/24	+4/-4	Ds1	20	19	10	0.8	15	From -16 to 90	Dark Grey/Green	Applications: Tool Room Machines, Plastic Injection Moulding Machines, Pressure Die Casting Machines, Shaper, Printing and Textile Machines etc.
DBOP2-s1-105-FG-S-Z-GR	1130	150	150	75	105	M16/18/20/22/24	+5/-5	Ds1	20	22	12	0.8	15	From -16 to 90	Dark Grey/Green	
DBOP3-s1-105-FG-S-Z-GR	2000	200	200	100	105	M16/18/20/22/24	+6/-6	Ds1	20	22	12	0.8	15	From -16 to 90	Dark Grey/Green	
DBOP4-s1-105-FG-S-Z-GR	2500	200	250	100	105	M16/18/20/22/24	+9/-9	Ds1	20	27	14	0.8	15	From -16 to 90	Dark Grey/Green	
DBOP5-s1-105-FG-S-Z-GR	4000	250	320	125	105	M16/18/20/22/24	+9/-9	Ds1	20	32	18	0.8	15	From -16 to 90	Dark Grey/Green	
DBOP6-s1-105-FG-S-Z-GR	6000	300	400	150	105	M16/18/20/22/24	+10/-10	Ds1	20	32	18	0.8	15	From -16 to 90	Dark Grey/Green	
DBOP7-s1-105-FG-S-Z-GR	10000	400	500	200	105	M16/18/20/22/24	+10/-10	Ds1	20	39	22	0.8	15	From -16 to 90	Dark Grey/Green	
DBOP1-s2-110-FG-S-Z-GR	950	115	115	57.5	110	M16/18/20/22/24	+4/-4	Ds2	25	19	10	0.8	8	From -16 to 90	Dark Grey/Green	Applications: Power Presses, Stamping Machines, Shearing Machines, Punching Machines. For machines with high vertical impact.
DBOP2-s2-110-FG-S-Z-GR	1600	150	150	75	110	M16/18/20/22/24	+5/-5	Ds2	25	22	12	0.8	8	From -16 to 90	Dark Grey/Green	
DBOP3-s2-110-FG-S-Z-GR	2800	200	200	100	110	M16/18/20/22/24	+6/-6	Ds2	25	22	12	0.8	8	From -16 to 90	Dark Grey/Green	
DBOP4-s2-110-FG-S-Z-GR	3500	200	250	100	110	M16/18/20/22/24	+9/-9	Ds2	25	27	14	0.8	8	From -16 to 90	Dark Grey/Green	
DBOP5-s2-110-FG-S-Z-GR	5500	250	320	125	110	M16/18/20/22/24	+9/-9	Ds2	25	32	18	0.8	8	From -16 to 90	Dark Grey/Green	
DBOP6-s2-110-FG-S-Z-GR	8500	300	400	150	110	M16/18/20/22/24	+10/-10	Ds2	25	32	18	0.8	8	From -16 to 90	Dark Grey/Green	
DBOP7-s2-110-FG-S-Z-GR	14000	400	500	200	110	M16/18/20/22/24	+10/-10	Ds2	25	39	22	0.8	8	From -16 to 90	Dark Grey/Green	



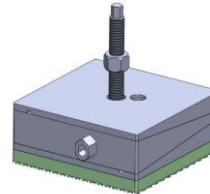
Model	Load Capacity Kg/pc	Length (L) mm	Width (B) mm	d (mm)	Height (H) at mean position (mm)	BOLT SIZE (mm)	Adjustment Range (mm)	Bottom pad Type	Bottom pad Thickness (mm)	SW1 (mm)	SW2 (mm)	Coeff. of Friction against Concrete	Natural Frequency at Max. Load (Hz)	Temperature Range (°C)	Color	Applications
DBOP1-hs1-150-FG-S-Z-GR	2650	115	115	57.5	150	M16/18/20/22/24	+4/-4	Dhs1	65	19	10	0.8	6	From -16 to 90	Dark Grey/Green	Applications : Forging Hammers, Heavy Gen Sets, Heavy Industrial machines, Test Rigs, Heavy presses etc.
DBOP2-hs1-150-FG-S-Z-GR	4500	150	150	75	150	M16/18/20/22/24	+5/-5	Dhs1	65	22	12	0.8	6	From -16 to 90	Dark Grey/Green	
DBOP3-hs1-150-FG-S-Z-GR	8000	200	200	100	150	M16/18/20/22/24	+6/-6	Dhs1	65	22	12	0.8	6	From -16 to 90	Dark Grey/Green	
DBOP4-hs1-150-FG-S-Z-GR	14000	200	250	100	150	M16/18/20/22/24	+9/-9	Dhs1	65	27	14	0.8	6	From -16 to 90	Dark Grey/Green	
DBOP5-hs1-150-FG-S-Z-GR	16000	250	320	125	150	M16/18/20/22/24	+9/-9	Dhs1	65	32	18	0.8	6	From -16 to 90	Dark Grey/Green	
DBOP6-hs1-150-FG-S-Z-GR	24000	300	400	150	150	M16/18/20/22/24	+10/-10	Dhs1	65	32	18	0.8	6	From -16 to 90	Dark Grey/Green	
DBOP7-hs1-150-FG-S-Z-GR	40000	400	500	200	150	M16/18/20/22/24	+10/-10	Dhs1	65	39	22	0.8	6	From -16 to 90	Dark Grey/Green	
DBOP1-hs2-150-FG-S-Z-GR	1060	115	115	57.5	150	M16/18/20/22/24	+4/-4	Dhs2	65	19	10	0.8	4	From -16 to 90	Dark Grey/Green	Applications : Forging Hammers, Heavy Gen Sets, Heavy Industrial machines, Test Rigs, Heavy presses, crushers etc.
DBOP2-hs2-150-FG-S-Z-GR	1800	150	150	75	150	M16/18/20/22/24	+5/-5	Dhs2	65	22	12	0.8	4	From -16 to 90	Dark Grey/Green	
DBOP3-hs2-150-FG-S-Z-GR	3200	200	200	100	150	M16/18/20/22/24	+6/-6	Dhs2	65	22	12	0.8	4	From -16 to 90	Dark Grey/Green	
DBOP4-hs2-150-FG-S-Z-GR	4000	200	250	100	150	M16/18/20/22/24	+9/-9	Dhs2	65	27	14	0.8	4	From -16 to 90	Dark Grey/Green	
DBOP5-hs2-150-FG-S-Z-GR	6400	250	320	125	150	M16/18/20/22/24	+9/-9	Dhs2	65	32	18	0.8	4	From -16 to 90	Dark Grey/Green	
DBOP6-hs2-150-FG-S-Z-GR	9600	300	400	150	150	M16/18/20/22/24	+10/-10	Dhs2	65	32	18	0.8	4	From -16 to 90	Dark Grey/Green	
DBOP7-hs2-150-FG-S-Z-GR	16000	400	500	200	150	M16/18/20/22/24	+10/-10	Dhs2	65	39	22	0.8	4	From -16 to 90	Dark Grey/Green	
DBOP1-hs3-135-FG-S-Z-GR	3700	115	115	57.5	135	M16/18/20/22/24	+4/-4	Dhs3	50	19	10	0.8	7	From -16 to 90	Dark Grey/Green	Applications : Forging Hammers, Heavy Gen Sets, Heavy Industrial machines, Test Rigs, Heavy presses etc.
DBOP2-hs3-135-FG-S-Z-GR	6300	150	150	75	135	M16/18/20/22/24	+5/-5	Dhs3	50	22	12	0.8	7	From -16 to 90	Dark Grey/Green	
DBOP3-hs3-135-FG-S-Z-GR	11200	200	200	100	135	M16/18/20/22/24	+6/-6	Dhs3	50	22	12	0.8	7	From -16 to 90	Dark Grey/Green	
DBOP4-hs3-135-FG-S-Z-GR	14000	200	250	100	135	M16/18/20/22/24	+9/-9	Dhs3	50	27	14	0.8	7	From -16 to 90	Dark Grey/Green	
DBOP5-hs3-135-FG-S-Z-GR	22400	250	320	125	135	M16/18/20/22/24	+9/-9	Dhs3	50	32	18	0.8	7	From -16 to 90	Dark Grey/Green	
DBOP6-hs3-135-FG-S-Z-GR	33600	300	400	150	135	M16/18/20/22/24	+10/-10	Dhs3	50	32	18	0.8	7	From -16 to 90	Dark Grey/Green	
DBOP7-hs3-135-FG-S-Z-GR	56000	400	500	200	135	M16/18/20/22/24	+10/-10	Dhs3	50	39	22	0.8	7	From -16 to 90	Dark Grey/Green	
DBOP1-hs4-135-FG-S-Z-GR	1590	115	115	57.5	135	M16/18/20/22/24	+4/-4	Dhs4	50	19	10	0.8	5	From -16 to 90	Dark Grey/Green	Applications : Forging Hammers, Heavy Gen Sets, Heavy Industrial machines, Test Rigs, Heavy presses, crushers etc.
DBOP2-hs4-135-FG-S-Z-GR	2700	150	150	75	135	M16/18/20/22/24	+5/-5	Dhs4	50	22	12	0.8	5	From -16 to 90	Dark Grey/Green	
DBOP3-hs4-135-FG-S-Z-GR	4800	200	200	100	135	M16/18/20/22/24	+6/-6	Dhs4	50	22	12	0.8	5	From -16 to 90	Dark Grey/Green	
DBOP4-hs4-135-FG-S-Z-GR	6000	200	250	100	135	M16/18/20/22/24	+9/-9	Dhs4	50	27	14	0.8	5	From -16 to 90	Dark Grey/Green	
DBOP5-hs4-135-FG-S-Z-GR	9600	250	320	125	135	M16/18/20/22/24	+9/-9	Dhs4	50	32	18	0.8	5	From -16 to 90	Dark Grey/Green	
DBOP6-hs4-135-FG-S-Z-GR	14000	300	400	150	135	M16/18/20/22/24	+10/-10	Dhs4	50	32	18	0.8	5	From -16 to 90	Dark Grey/Green	
DBOP7-hs4-135-FG-S-Z-GR	24000	400	500	200	135	M16/18/20/22/24	+10/-10	Dhs4	50	39	22	0.8	5	From -16 to 90	Dark Grey/Green	
DBOP1-hs5-165-FG-S-Z-GR	3700	115	115	57.5	165	M16/18/20/22/24	+4/-4	Dhs5	80	19	10	0.8	5	From -16 to 90	Dark Grey/Green	Applications : Forging Hammers, Heavy Gen Sets, Heavy Industrial machines, Test Rigs, Heavy presses etc.
DBOP2-hs5-165-FG-S-Z-GR	6300	150	150	75	165	M16/18/20/22/24	+5/-5	Dhs5	80	22	12	0.8	5	From -16 to 90	Dark Grey/Green	
DBOP3-hs5-165-FG-S-Z-GR	11200	200	200	100	165	M16/18/20/22/24	+6/-6	Dhs5	80	22	12	0.8	5	From -16 to 90	Dark Grey/Green	
DBOP4-hs5-165-FG-S-Z-GR	14000	200	250	100	165	M16/18/20/22/24	+9/-9	Dhs5	80	27	14	0.8	5	From -16 to 90	Dark Grey/Green	
DBOP5-hs5-165-FG-S-Z-GR	22400	250	320	125	165	M16/18/20/22/24	+9/-9	Dhs5	80	32	18	0.8	5	From -16 to 90	Dark Grey/Green	
DBOP6-hs5-165-FG-S-Z-GR	33600	300	400	150	165	M16/18/20/22/24	+10/-10	Dhs5	80	32	18	0.8	5	From -16 to 90	Dark Grey/Green	
DBOP7-hs5-165-FG-S-Z-GR	56000	400	500	200	165	M16/18/20/22/24	+10/-10	Dhs5	80	39	22	0.8	5	From -16 to 90	Dark Grey/Green	



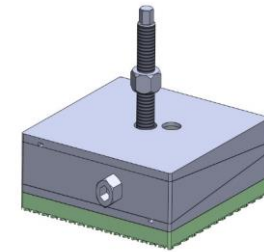
DBOP1



DBOP3

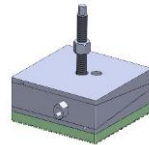
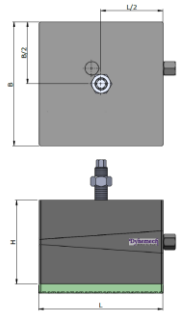


DBOP5

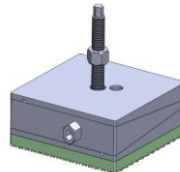


DBOP7

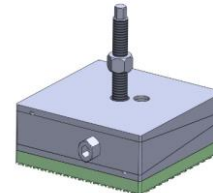
Model	Load Capacity Kg/pc	Length (L) mm	Width (B) mm	d (mm)	Height (H) at mean position (mm)	BOLT SIZE (mm)	Adjustment Range (mm)	Bottom pad Type	Bottom pad Thickness (mm)	SW1 (mm)	SW2 (mm)	Coeff. of Friction against Concrete	Natural Frequency at Max. Load (Hz)	Temperature Range (°C)	Color	Applications
DBOP1-h-100-FG-S-Z-GR	3970	115	115	57.5	100	M16/18/20/22/24	+4/-4	Dh	15	19	10	0.6	45	From -16 to 90	Dark Grey/Green	Applications : Very Heavy and long bed machines, long machining centres, planners etc.
DBOP2-h-100-FG-S-Z-GR	6750	150	150	75	100	M16/18/20/22/24	+5/-5	Dh	15	22	12	0.6	45	From -16 to 90	Dark Grey/Green	
DBOP3-h-100-FG-S-Z-GR	12000	200	200	100	100	M16/18/20/22/24	+6/-6	Dh	15	22	12	0.6	45	From -16 to 90	Dark Grey/Green	
DBOP4-h-100-FG-S-Z-GR	15000	200	250	100	100	M16/18/20/22/24	+9/-9	Dh	15	27	14	0.6	45	From -16 to 90	Dark Grey/Green	
DBOP5-h-100-FG-S-Z-GR	24000	250	320	125	100	M16/18/20/22/24	+9/-9	Dh	15	32	18	0.6	45	From -16 to 90	Dark Grey/Green	
DBOP6-h-100-FG-S-Z-GR	36000	300	400	150	100	M16/18/20/22/24	+10/-10	Dh	15	32	18	0.6	45	From -16 to 90	Dark Grey/Green	
DBOP7-h-100-FG-S-Z-GR	60000	400	500	200	100	M16/18/20/22/24	+10/-10	Dh	15	39	22	0.6	45	From -16 to 90	Dark Grey/Green	



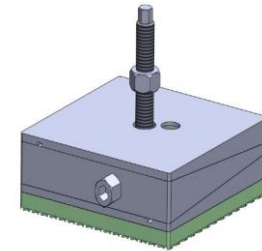
DBOP1



DBOP3

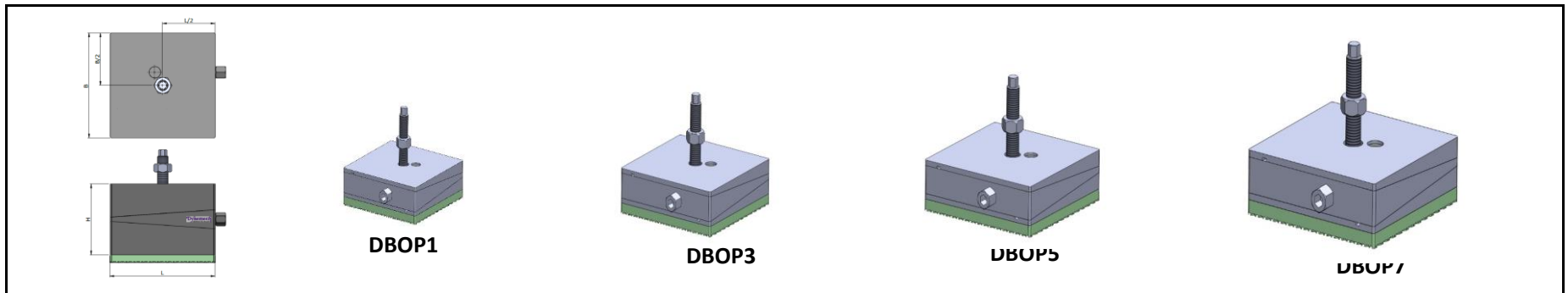


DBOP5

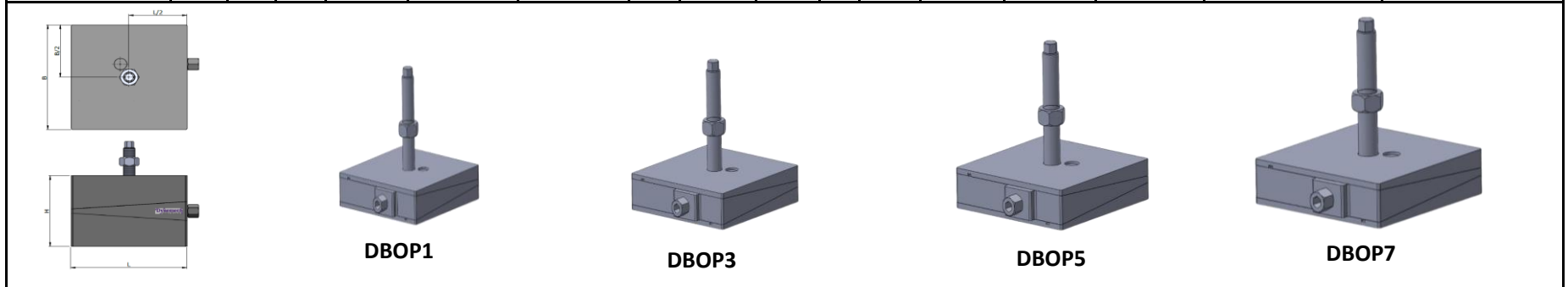


DBOP7

Model	Load Capacity Kg/pc	Length (L) mm	Width (B) mm	d (mm)	Height (H) at mean position (mm)	BOLT SIZE (mm)	Adjustment Range (mm)	Bottom pad Type	Bottom pad Thickness (mm)	SW1 (mm)	SW2 (mm)	Coeff. of Friction against Concrete	Natural Frequency at Max. Load (Hz)	Temperature Range (°C)	Color	Applications
DBOP1-a1-87-FG-S-Z-GR	2380	115	115	57.5	87	M16/18/20/22/24	+4/-4	Da1	2	19	10	0.8	70	From -16 to 90	Dark Grey/Green	
DBOP2-a1-87-FG-S-Z-GR	4050	150	150	75	87	M16/18/20/22/24	+5/-5	Da1	2	22	12	0.8	70	From -16 to 90	Dark Grey/Green	
DBOP3-a1-87-FG-S-Z-GR	7200	200	200	100	87	M16/18/20/22/24	+6/-6	Da1	2	22	12	0.8	70	From -16 to 90	Dark Grey/Green	
DBOP4-a1-87-FG-S-Z-GR	9000	200	250	100	87	M16/18/20/22/24	+9/-9	Da1	2	27	14	0.8	70	From -16 to 90	Dark Grey/Green	
DBOP5-a1-87-FG-S-Z-GR	14400	250	320	125	87	M16/18/20/22/24	+9/-9	Da1	2	32	18	0.8	70	From -16 to 90	Dark Grey/Green	
DBOP6-a1-87-FG-S-Z-GR	21600	300	400	150	87	M16/18/20/22/24	+10/-10	Da1	2	32	18	0.8	70	From -16 to 90	Dark Grey/Green	
DBOP7-a1-87-FG-S-Z-GR	36000	400	500	200	87	M16/18/20/22/24	+10/-10	Da1	2	39	22	0.8	70	From -16 to 90	Dark Grey/Green	



Model	Load Capacity Kg/pc	Length (L) mm	Width (B) mm	d (mm)	Height (H) at mean position (mm)	BOLT SIZE (mm)	Adjustment Range (mm)	Bottom pad Type	Bottom pad Thickness (mm)	SW1 (mm)	SW2 (mm)	Coeff. of Friction against Concrete	Natural Frequency at Max. Load (Hz)	Temperature Range (°C)	Color	Applications
DBOP1-a2-93-FG-S-Z-GR	1320	115	115	57.5	93	M16/18/20/22/24	+4/-4	Da2	8	19	10	0.9	45	From -16 to 90	Dark Grey/Green	
DBOP2-a2-93-FG-S-Z-GR	2250	150	150	75	93	M16/18/20/22/24	+5/-5	Da2	8	22	12	0.9	45	From -16 to 90	Dark Grey/Green	
DBOP3-a2-93-FG-S-Z-GR	4000	200	200	100	93	M16/18/20/22/24	+6/-6	Da2	8	22	12	0.9	45	From -16 to 90	Dark Grey/Green	
DBOP4-a2-93-FG-S-Z-GR	6500	200	250	100	93	M16/18/20/22/24	+9/-9	Da2	8	27	14	0.9	45	From -16 to 90	Dark Grey/Green	
DBOP5-a2-93-FG-S-Z-GR	8000	250	320	125	93	M16/18/20/22/24	+9/-9	Da2	8	32	18	0.9	45	From -16 to 90	Dark Grey/Green	
DBOP6-a2-93-FG-S-Z-GR	12000	300	400	150	93	M16/18/20/22/24	+10/-10	Da2	8	32	18	0.9	45	From -16 to 90	Dark Grey/Green	
DBOP7-a2-93-FG-S-Z-GR	20000	400	500	200	93	M16/18/20/22/24	+10/-10	Da2	8	39	22	0.9	45	From -16 to 90	Dark Grey/Green	



Model	Load Capacity Kg/pc	Length (L) mm	Width (B) mm	d (mm)	Height (H) at mean position (mm)	BOLT SIZE (mm)	Adjustment Range (mm)	Bottom pad Type	Bottom pad Thickness (mm)	SW1 (mm)	SW2 (mm)	Coeff. of Friction against Concrete	Natural Frequency at Max. Load (Hz)	Temperature Range (°C)	Color	Applications
DBOP1-85-FG-S-Z-GR	3600	115	115	57.5	85	M16/18/20/22/24	+4/-4	X	X	19	10	X	X	From -16 to 90	Dark Grey/Green	Applications : For levelling of all Precision Machines.
DBOP2-85-FG-S-Z-GR	3800	150	150	75	85	M16/18/20/22/24	+5/-5	X	X	22	12	X	X	From -16 to 90	Dark Grey/Green	
DBOP3-85-FG-S-Z-GR	10400	200	200	100	85	M16/18/20/22/24	+6/-6	X	X	22	12	X	X	From -16 to 90	Dark Grey/Green	
DBOP4-85-FG-S-Z-GR	13000	200	250	100	85	M16/18/20/22/24	+9/-9	X	X	27	14	X	X	From -16 to 90	Dark Grey/Green	
DBOP5-85-FG-S-Z-GR	20000	250	320	125	85	M16/18/20/22/24	+9/-9	X	X	32	18	X	X	From -16 to 90	Dark Grey/Green	
DBOP6-85-FG-S-Z-GR	30000	300	400	150	85	M16/18/20/22/24	+10/-10	X	X	32	18	X	X	From -16 to 90	Dark Grey/Green	
DBOP7-85-FG-S-Z-GR	40000	400	500	200	85	M16/18/20/22/24	+10/-10	X	X	39	22	X	X	From -16 to 90	Dark Grey/Green	