

DBHP1



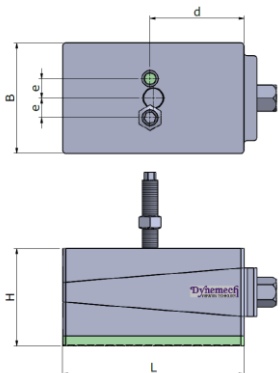
DBHP2



DBHP3

Dynemech Wedge mounts, Series DBPH-150 mounts are sturdy in construction. Wedge mounts are bolted with the machine base. High levelling adjustment avoids the need of extra shims for installations on steep slope surfaces. DBPH has a height of 150mm to meet TPM requirements. Respective insulation plates are assembled to meet various applications.

Model	Load Capacity Kg/pc	Length (L) mm	Width (B) mm	Height (H) at mean position (mm)	d (mm)	e (mm)	BOLT SIZE (mm)	Adjustment Range (mm)	Bottom pad Type	Bottom pad Thickness (mm)	SW1 (mm)	SW2 (mm)	Coeff. of Friction against Concrete	Natural Frequency at Max. Load (Hz)	Temperature Range (°C)	Color	Applications
DBHP1-u-150-M20-FG-DG	2250	200	125	150	75	25	M20	+8/-8	Du	15	22	12	0.9	18	From -16 to 90	Dark Grey/Green	Applications: Tool Room Machines, Plastic Injection Moulding Machines, Pressure Die Casting Machines, Shaper, Printing and Textile Machines etc.
DBHP2-u-150-M20-FG-DG	2700	200	150	150	75	25	M20	+10/-10	Du	15	22	12	0.9	18	From -16 to 90	Dark Grey/Green	
DBHP3-u-150-M20-FG-DG	4200	280	170	150	145	30	M20	+12.5/-12.5	Du	15	39	22	0.9	18	From -16 to 90	Dark Grey/Green	
DBHP1-u-10-145-M20-FG-DG	2250	200	125	145	75	25	M20	+8/-8	Du-10	10	22	12	0.9	25	From -16 to 90	Dark Grey/Green	Applications: Tool Room Machines, Plastic Injection Moulding Machines, Pressure Die Casting Machines, Shaper, Printing and Textile Machines etc.
DBHP2-u-10-145-M20-FG-DG	2700	200	150	145	75	25	M20	+10/-10	Du-10	10	22	12	0.9	25	From -16 to 90	Dark Grey/Green	
DBHP3-u-10-145-M20-FG-DG	4200	280	170	145	145	30	M20	+12.5/-12.5	Du-10	10	39	22	0.9	25	From -16 to 90	Dark Grey/Green	
DBHP1-u-12-147-M20-FG-DG	2250	200	125	147	75	25	M20	+8/-8	Du-12	12	22	12	0.9	20	From -16 to 90	Dark Grey/Green	Applications: Tool Room Machines, Plastic Injection Moulding Machines, Pressure Die Casting Machines, Shaper, Printing and Textile Machines etc.
DBHP2-u-12-147-M20-FG-DG	2700	200	150	147	75	25	M20	+10/-10	Du-12	12	22	12	0.9	20	From -16 to 90	Dark Grey/Green	
DBHP3-u-12-147-M20-FG-DG	4200	280	170	147	145	30	M20	+12.5/-12.5	Du-12	12	39	22	0.9	20	From -16 to 90	Dark Grey/Green	



DBHP1

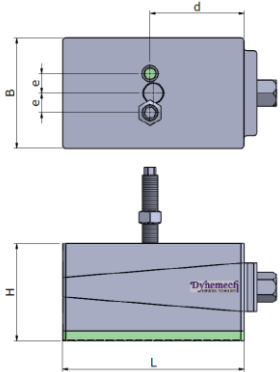


DBHP2



DBHP3

Model	Load Capacity Kg/pc	Length (L) mm	Width (B) mm	Height (H) at mean position (mm)	d (mm)	e (mm)	BOLT SIZE (mm)	Adjustment Range (mm)	Bottom pad Type	Bottom pad Thickness (mm)	SW1 (mm)	SW2 (mm)	Coeff. of Friction against Concrete	Natural Frequency at Max. Load (Hz)	Temperature Range (°C)	Color	Applications
DBHP1-m-150-M20-FG-DG	2500	200	125	150	75	25	M20	+8/-8	Dm	15	22	12	0.7	30	From -16 to 90	Dark Grey/Green	Applications: Power Presses, Stamping Machines, Shearing Machines, Punching Machines. For machines with high vertical impact.
DBHP2-m-150-M20-FG-DG	3000	200	150	150	75	25	M20	+10/-10	Dm	15	22	12	0.7	30	From -16 to 90	Dark Grey/Green	
DBHP3-m-150-M20-FG-DG	4600	280	170	150	145	30	M20	+12.5/-12.5	Dm	15	39	22	0.7	30	From -16 to 90	Dark Grey/Green	



DBHP1

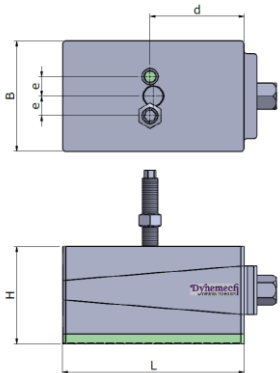


DBHP2



DBHP3

Model	Load Capacity Kg/pc	Length (L) mm	Width (B) mm	Height (H) at mean position (mm)	d (mm)	e (mm)	BOLT SIZE (mm)	Adjustment Range (mm)	Bottom pad Type	Bottom pad Thickness (mm)	SW1 (mm)	SW2 (mm)	Coeff. of Friction against Concrete	Natural Frequency at Max. Load (Hz)	Temperature Range (°C)	Color	Applications
DBHP1-i-160-M20-FG-DG	3500	200	125	160	75	25	M20	+8/-8	Di	25	22	12	0.8	7	From -16 to 90	Dark Grey/Green	Applications: Power Presses, Stamping Machines, Shearing Machines, Punching Machines. For machines with high vertical impact.
DBHP2-i-160-M20-FG-DG	4200	200	150	160	75	25	M20	+10/-10	Di	25	22	12	0.8	7	From -16 to 90	Dark Grey/Green	
DBHP3-i-160-M20-FG-DG	6400	280	170	160	145	30	M20	+12.5/-12.5	Di	25	39	22	0.8	7	From -16 to 90	Dark Grey/Green	



DBHP1



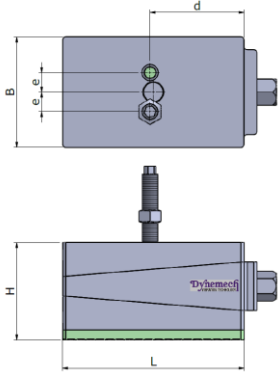
DBHP2



DBHP3

Model	Load Capacity Kg/pc	Length (L) mm	Width (B) mm	Height (H) at mean position (mm)	d (mm)	e (mm)	BOLT SIZE (mm)	Adjustment Range (mm)	Bottom pad Type	Bottom pad Thickness (mm)	SW1 (mm)	SW2 (mm)	Coeff. of Friction against Concrete	Natural Frequency at Max. Load (Hz)	Temperature Range (°C)	Color	Applications
DBHP1-p1-150-M20-FG-DG	1000	200	125	150	75	25	M20	+8/-8	Dp1	15	22	12	0.8	7	From -16 to 90	Dark Grey/Green	Applications: Power Presses, Stamping Machines, Shearing Machines, Punching Machines. For machines with high vertical impact.
DBHP2-p1-150-M20-FG-DG	1200	200	150	150	75	25	M20	+10/-10	Dp1	15	22	12	0.8	7	From -16 to 90	Dark Grey/Green	
DBHP3-p1-150-M20-FG-DG	1900	280	170	150	145	30	M20	+12.5/-12.5	Dp1	15	39	22	0.8	7	From -16 to 90	Dark Grey/Green	

DBHP1-p2-155-M20-FG-DG	1250	200	125	155	75	25	M20	+8/-8	Dp2	20	22	12	0.8	12	From -16 to 90	Dark Grey/Green	Applications: Medium Presses, Punching Presses, Centreless Grinding Machines, Gear Shapers, High Speed Machines on upper floors.
DBHP2-p2-155-M20-FG-DG	1500	200	150	155	75	25	M20	+10/-10	Dp2	20	22	12	0.8	12	From -16 to 90	Dark Grey/Green	
DBHP3-p2-155-M20-FG-DG	2380	280	170	155	145	30	M20	+12.5/-12.5	Dp2	20	39	22	0.8	12	From -16 to 90	Dark Grey/Green	
DBHP1-p3-159-M20-FG-DG	1500	200	125	159	75	25	M20	+8/-8	Dp3	24	22	12	0.8	7	From -16 to 90	Dark Grey/Green	Applications: Tool Room Machines on suspended Floors, Light Weight Presses, Compressors etc.
DBHP2-p3-159-M20-FG-DG	1800	200	150	159	75	25	M20	+10/-10	Dp3	24	22	12	0.8	7	From -16 to 90	Dark Grey/Green	
DBHP3-p3-159-M20-FG-DG	2860	280	170	159	145	30	M20	+12.5/-12.5	Dp3	24	39	22	0.8	7	From -16 to 90	Dark Grey/Green	



DBHP1

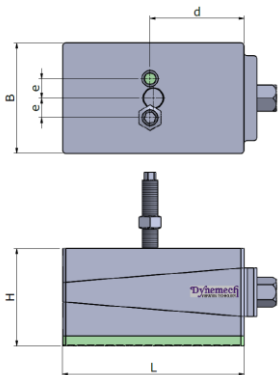


DBHP2



DBHP3

Model	Load Capacity Kg/pc	Length (L) mm	Width (B) mm	Height (H) at mean position (mm)	d (mm)	e (mm)	BOLT SIZE (mm)	Adjustment Range (mm)	Bottom pad Type	Bottom pad Thickness (mm)	SW1 (mm)	SW2 (mm)	Coeff. of Friction against Concrete	Natural Frequency at Max. Load (Hz)	Temperature Range (°C)	Color	Applications
DBHP1-s1-155-M20-FG-DG	1250	200	125	155	75	25	M20	+8/-8	Ds1	20	22	12	0.8	15	From -16 to 90	Dark Grey/Green	Applications: Tool Room Machines, Plastic Injection Moulding Machines, Pressure Die Casting Machines, Shaper, Printing and Textile Machines etc.
DBHP2-s1-155-M20-FG-DG	1500	200	150	155	75	25	M20	+10/-10	Ds1	20	22	12	0.8	15	From -16 to 90	Dark Grey/Green	
DBHP3-s1-155-M20-FG-DG	2380	280	170	155	145	30	M20	+12.5/-12.5	Ds1	20	39	22	0.8	15	From -16 to 90	Dark Grey/Green	
DBHP1-s2-160-M20-FG-DG	2000	200	125	160	75	25	M20	+8/-8	Ds2	25	22	12	0.8	8	From -16 to 90	Dark Grey/Green	Applications: Power Presses, Stamping Machines, Shearing Machines, Punching Machines. For machines with high vertical impact.
DBHP2-s2-160-M20-FG-DG	2400	200	150	160	75	25	M20	+10/-10	Ds2	25	22	12	0.8	8	From -16 to 90	Dark Grey/Green	
DBHP3-s2-160-M20-FG-DG	3800	280	170	160	145	30	M20	+12.5/-12.5	Ds2	25	39	22	0.8	8	From -16 to 90	Dark Grey/Green	



DBHP1



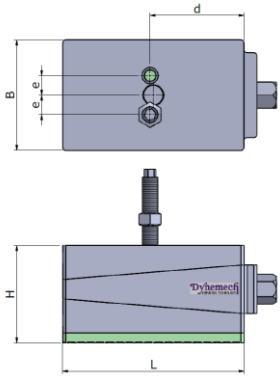
DBHP2



DBHP3

Model	Load Capacity Kg/pc	Length (L) mm	Width (B) mm	Height (H) at mean position (mm)	d (mm)	e (mm)	BOLT SIZE (mm)	Adjustment Range (mm)	Bottom pad Type	Bottom pad Thickness (mm)	SW1 (mm)	SW2 (mm)	Coeff. of Friction against Concrete	Natural Frequency at Max. Load (Hz)	Temperature Range (°C)	Color	Applications
DBHP1-hs1-200-M20-FG-DG	5000	200	125	200	75	25	M20	+8/-8	Dhs1	65	22	12	0.8	6	From -16 to 90	Dark Grey/Green	Applications : Forging Hammers, Heavy Gen Sets, Heavy Industrial machines, Test Rigs, Heavy presses etc.
DBHP2-hs1-200-M20-FG-DG	6000	200	150	200	75	25	M20	+10/-10	Dhs1	65	22	12	0.8	6	From -16 to 90	Dark Grey/Green	

DBHP3-hs1-200-M20-FG-DG	9520	280	170	200	145	30	M20	+12.5/-12.5	Dhs1	65	39	22	0.8	6	From -16 to 90	Dark Grey/Green	Industrial machines, Test rigs, Heavy presses etc.
DBHP1-hs2-200-M20-FG-DG	2000	200	125	200	75	25	M20	+8/-8	Dhs2	65	22	12	0.8	4	From -16 to 90	Dark Grey/Green	Applications : Forging Hammers, Heavy Gen Sets, Heavy Industrial machines, Test Rigs, Heavy presses, crushers etc.
DBHP2-hs2-200-M20-FG-DG	2400	200	150	200	75	25	M20	+10/-10	Dhs2	65	22	12	0.8	4	From -16 to 90	Dark Grey/Green	
DBHP3-hs2-200-M20-FG-DG	3800	280	170	200	145	30	M20	+12.5/-12.5	Dhs2	65	39	22	0.8	4	From -16 to 90	Dark Grey/Green	
DBHP1-hs3-185-M20-FG-DG	7000	200	125	185	75	25	M20	+8/-8	Dhs3	50	22	12	0.8	7	From -16 to 90	Dark Grey/Green	
DBHP2-hs3-185-M20-FG-DG	8400	200	150	185	75	25	M20	+10/-10	Dhs3	50	22	12	0.8	7	From -16 to 90	Dark Grey/Green	Applications : Forging Hammers, Heavy Gen Sets, Heavy Industrial machines, Test Rigs, Heavy presses etc.
DBHP3-hs3-185-M20-FG-DG	13330	280	170	185	145	30	M20	+12.5/-12.5	Dhs3	50	39	22	0.8	7	From -16 to 90	Dark Grey/Green	
DBHP1-hs4-185-M20-FG-DG	3000	200	125	185	75	25	M20	+8/-8	Dhs4	50	22	12	0.8	5	From -16 to 90	Dark Grey/Green	Applications : Forging Hammers, Heavy Gen Sets, Heavy Industrial machines, Test Rigs, Heavy presses, crushers etc.
DBHP2-hs4-185-M20-FG-DG	3600	200	150	185	75	25	M20	+10/-10	Dhs4	50	22	12	0.8	5	From -16 to 90	Dark Grey/Green	
DBHP3-hs4-185-M20-FG-DG	5700	280	170	185	145	30	M20	+12.5/-12.5	Dhs4	50	39	22	0.8	5	From -16 to 90	Dark Grey/Green	
DBHP1-hs5-215-M20-FG-DG	7000	200	125	215	75	25	M20	+8/-8	Dhs5	80	22	12	0.8	5	From -16 to 90	Dark Grey/Green	Applications : Forging Hammers, Heavy Gen Sets, Heavy Industrial machines, Test Rigs, Heavy presses etc.
DBHP2-hs5-215-M20-FG-DG	8400	200	150	215	75	25	M20	+10/-10	Dhs5	80	22	12	0.8	5	From -16 to 90	Dark Grey/Green	
DBHP3-hs5-215-M20-FG-DG	13330	280	170	215	145	30	M20	+12.5/-12.5	Dhs5	80	39	22	0.8	5	From -16 to 90	Dark Grey/Green	



DBHP1

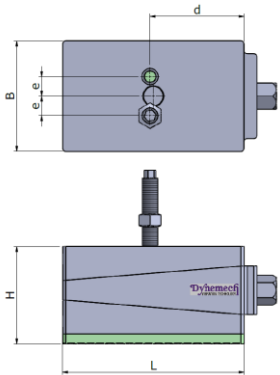


DBHP2



DBHP3

Model	Load Capacity Kg/pc	Length (L) mm	Width (B) mm	Height (H) at mean position (mm)	d (mm)	e (mm)	BOLT SIZE (mm)	Adjustment Range (mm)	Bottom pad Type	Bottom pad Thickness (mm)	SW1 (mm)	SW2 (mm)	Coeff. of Friction against Concrete	Natural Frequency at Max. Load (Hz)	Temperature Range (°C)	Color	Applications
DBHP1-h-150-M20-FG-DG	7500	200	125	150	75	25	M20	+8/-8	Dh	15	22	12	0.6	45	From -16 to 90	Dark Grey/Green	Applications : Very Heavy and long bed machines, long machining centres, planners etc.
DBHP2-h-150-M20-FG-DG	9000	200	150	150	75	25	M20	+10/-10	Dh	15	22	12	0.6	45	From -16 to 90	Dark Grey/Green	
DBHP3-h-150-M20-FG-DG	14000	280	170	150	145	30	M20	+12.5/-12.5	Dh	15	39	22	0.6	45	From -16 to 90	Dark Grey/Green	



DBHP1

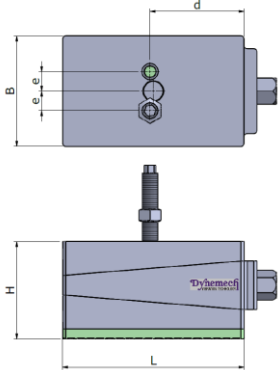


DBHP2



DBHP3

Model	Load Capacity Kg/pc	Length (L) mm	Width (B) mm	Height (H) at mean position (mm)	d (mm)	e (mm)	BOLT SIZE (mm)	Adjustment Range (mm)	Bottom pad Type	Bottom pad Thickness (mm)	SW1 (mm)	SW2 (mm)	Coeff. of Friction against Concrete	Natural Frequency at Max. Load (Hz)	Temperature Range (°C)	Color	Applications
DBHP1-a1-137-M20-FG-DG	4500	200	125	137	75	25	M20	+8/-8	Da1	2	22	12	0.8	70	From -16 to 90	Dark Grey/Green	
DBHP2-a1-137-M20-FG-DG	5400	200	150	137	75	25	M20	+10/-10	Da1	2	22	12	0.8	70	From -16 to 90	Dark Grey/Green	
DBHP3-a1-137-M20-FG-DG	8570	280	170	137	145	30	M20	+12.5/-12.5	Da1	2	39	22	0.8	70	From -16 to 90	Dark Grey/Green	



DBHP1

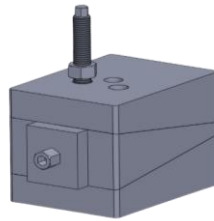
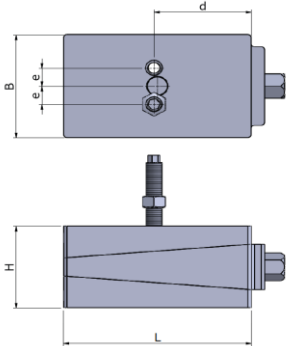


DBHP2

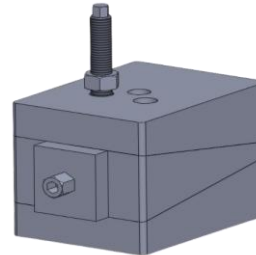


DBHP3

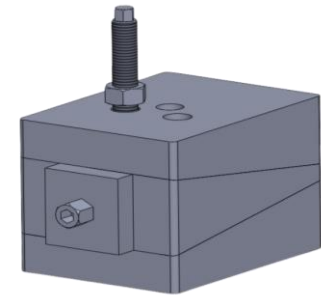
Model	Load Capacity Kg/pc	Length (L) mm	Width (B) mm	Height (H) at mean position (mm)	d (mm)	e (mm)	BOLT SIZE (mm)	Adjustment Range (mm)	Bottom pad Type	Bottom pad Thickness (mm)	SW1 (mm)	SW2 (mm)	Coeff. of Friction against Concrete	Natural Frequency at Max. Load (Hz)	Temperature Range (°C)	Color	Applications
DBHP1-a2-143-M20-FG-DG	2500	200	125	143	75	25	M20	+8/-8	Da2	8	22	12	0.9	45	From -16 to 90	Dark Grey/Green	
DBHP2-a2-143-M20-FG-DG	3000	200	150	143	75	25	M20	+10/-10	Da2	8	22	12	0.9	45	From -16 to 90	Dark Grey/Green	
DBHP3-a2-143-M20-FG-DG	4760	280	170	143	145	30	M20	+12.5/-12.5	Da2	8	39	22	0.9	45	From -16 to 90	Dark Grey/Green	



DBHP1



DBHP2



DBHP3

Model	Load Capacity Kg/pc	Length (L) mm	Width (B) mm	Height (H) at mean position (mm)	d (mm)	e (mm)	BOLT SIZE (mm)	Adjustment Range (mm)	Bottom pad Type	Bottom pad Thickness (mm)	SW1 (mm)	SW2 (mm)	Coeff. of Friction against Concrete	Natural Frequency at Max. Load (Hz)	Temperature Range (°C)	Color	Applications
DBHP1-135-M20-FG-DG	13000	200	125	135	75	25	M20	+8/-8	X	X	22	12	X	X	From -16 to 90	Dark Grey/Green	Applications : For levelling of all Precision Machines.
DBHP2-135-M20-FG-DG	16000	200	150	135	75	25	M20	+10/-10	X	X	22	12	X	X	From -16 to 90	Dark Grey/Green	
DBHP3-135-M20-FG-DG	23000	280	170	135	145	30	M20	+12.5/-12.5	X	X	39	22	X	X	From -16 to 90	Dark Grey/Green	