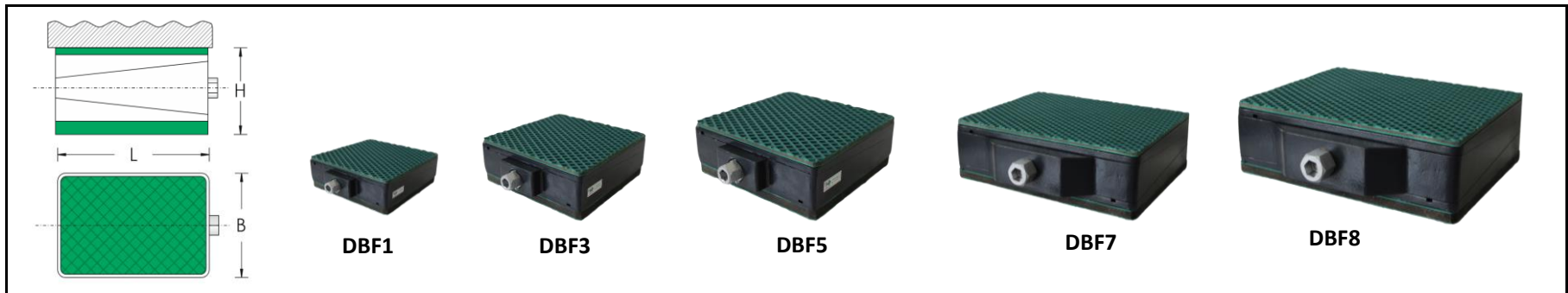


Dynemech Wedge mounts, Series DBF are designed for industrial machine tools that require precision levelling, vibration reduction, and/or need to be firmly mounted with the isolator.

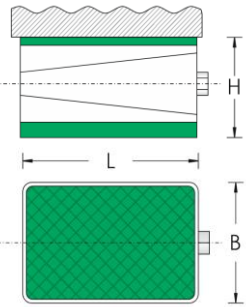
Model	Load Capacity Kg/pc	Length (L) mm	Width (B) mm	Height (H) at mean position (mm)	Adjustment Range (mm)	Bottom pad Type	Bottom pad Thickness (mm)	Top pad Type	Top pad Thickness (mm)	SW1 (mm)	SW2 (mm)	Coeff. of Friction against Concrete	Natural Frequency at Max. Load (Hz)	Temperature Range (° C)	Color	Applications
DBF0-U-A2-FG-DG	900	100	100	61	+3/-3	Du	15	Da2	8	19	10	0.9	18	From -16 to 90	Dark Grey/Green	Applications: Tool Room Machines, Plastic Injection Moulding Machines, Pressure Die Casting Machines, Shaper, Printing and Textile Machines etc.
DBF1-U-A2-FG-DG	1100	115	115	67	+4/-4	Du	15	Da2	8	19	10	0.9	18	From -16 to 90	Dark Grey/Green	
DBF2-U-A2-FG-DG	1800	150	150	73	+5/-5	Du	15	Da2	8	22	12	0.9	18	From -16 to 90	Dark Grey/Green	
DBF3-U-A2-FG-DG	3200	200	200	73	+6/-6	Du	15	Da2	8	22	12	0.9	18	From -16 to 90	Dark Grey/Green	
DBF4-U-A2-FG-DG	4000	200	250	93	+9/-9	Du	15	Da2	8	27	14	0.9	18	From -16 to 90	Dark Grey/Green	
DBF5-U-A2-FG-DG	6400	250	320	98	+9/-9	Du	15	Da2	8	32	18	0.9	18	From -16 to 90	Dark Grey/Green	
DBF6-U-A2-FG-DG	9600	300	400	98	+10/-10	Du	15	Da2	8	32	18	0.9	18	From -16 to 90	Dark Grey/Green	
DBF7-U-A2-FG-DG	16000	400	500	103	+10/-10	Du	15	Da2	8	39	22	0.9	18	From -16 to 90	Dark Grey/Green	
DBF0-U-10-A2-FG-DG	900	100	100	56	+3/-3	Du-10	10	Da2	8	19	10	0.9	25	From -16 to 90	Dark Grey/Green	Applications: Tool Room Machines, Plastic Injection Moulding Machines, Pressure Die Casting Machines, Shaper, Printing and Textile Machines etc.
DBF1-U-10-A2-FG-DG	1100	115	115	62	+4/-4	Du-10	10	Da2	8	19	10	0.9	25	From -16 to 90	Dark Grey/Green	
DBF2-U-10-A2-FG-DG	1800	150	150	68	+5/-5	Du-10	10	Da2	8	22	12	0.9	25	From -16 to 90	Dark Grey/Green	
DBF3-U-10-A2-FG-DG	3200	200	200	68	+6/-6	Du-10	10	Da2	8	22	12	0.9	25	From -16 to 90	Dark Grey/Green	
DBF4-U-10-A2-FG-DG	4000	200	250	88	+9/-9	Du-10	10	Da2	8	27	14	0.9	25	From -16 to 90	Dark Grey/Green	
DBF5-U-10-A2-FG-DG	6400	250	320	93	+9/-9	Du-10	10	Da2	8	32	18	0.9	25	From -16 to 90	Dark Grey/Green	
DBF6-U-10-A2-FG-DG	9600	300	400	93	+10/-10	Du-10	10	Da2	8	32	18	0.9	25	From -16 to 90	Dark Grey/Green	
DBF7-U-10-A2-FG-DG	16000	400	500	98	+10/-10	Du-10	10	Da2	8	39	22	0.9	25	From -16 to 90	Dark Grey/Green	
DBF0-U-12-A2-FG-DG	900	100	100	58	+3/-3	Du-12	12	Da2	8	19	10	0.9	20	From -16 to 90	Dark Grey/Green	Applications: Tool Room Machines, Plastic Injection Moulding Machines, Pressure Die Casting Machines, Shaper, Printing and Textile Machines etc.
DBF1-U-12-A2-FG-DG	1100	115	115	64	+4/-4	Du-12	12	Da2	8	19	10	0.9	20	From -16 to 90	Dark Grey/Green	
DBF2-U-12-A2-FG-DG	1800	150	150	70	+5/-5	Du-12	12	Da2	8	22	12	0.9	20	From -16 to 90	Dark Grey/Green	
DBF3-U-12-A2-FG-DG	3200	200	200	70	+6/-6	Du-12	12	Da2	8	22	12	0.9	20	From -16 to 90	Dark Grey/Green	
DBF4-U-12-A2-FG-DG	4000	200	250	90	+9/-9	Du-12	12	Da2	8	27	14	0.9	20	From -16 to 90	Dark Grey/Green	
DBF5-U-12-A2-FG-DG	6400	250	320	95	+9/-9	Du-12	12	Da2	8	32	18	0.9	20	From -16 to 90	Dark Grey/Green	
DBF6-U-12-A2-FG-DG	9600	300	400	95	+10/-10	Du-12	12	Da2	8	32	18	0.9	20	From -16 to 90	Dark Grey/Green	
DBF7-U-12-A2-FG-DG	16000	400	500	100	+10/-10	Du-12	12	Da2	8	39	22	0.9	20	From -16 to 90	Dark Grey/Green	



Model	Load Capacity Kg/pc	Length (L) mm	Width (B) mm	Height (H) at mean position (mm)	Adjustment Range (mm)	Bottom pad Type	Bottom pad Thickness (mm)	Top pad Type	Top pad Thickness (mm)	SW1 (mm)	SW2 (mm)	Coeff. of Friction against Concrete	Natural Frequency at Max. Load (Hz)	Temperature Range (° C)	Color	Applications
DBF1-M-A1-FG-DG	1000	100	100	55	+3/-3	Dm	15	Da1	2	19	10	0.7	30	From -16 to 90	Dark Grey/Green	Applications: Lathe Machines, Machining Centres, Milling Machines, Precision Grinding Machines, Drilling Machines, Turning Centres, Transfer Lines etc.
DBF2-M-A1-FG-DG	1400	115	115	61	+4/-4	Dm	15	Da1	2	19	10	0.7	30	From -16 to 90	Dark Grey/Green	
DBF3-M-A1-FG-DG	2200	150	150	67	+5/-5	Dm	15	Da1	2	22	12	0.7	30	From -16 to 90	Dark Grey/Green	
DBF4-M-A1-FG-DG	4000	200	200	67	+6/-6	Dm	15	Da1	2	22	12	0.7	30	From -16 to 90	Dark Grey/Green	
DBF5-M-A1-FG-DG	5000	200	250	87	+9/-9	Dm	15	Da1	2	27	14	0.7	30	From -16 to 90	Dark Grey/Green	
DBF6-M-A1-FG-DG	8000	250	320	92	+9/-9	Dm	15	Da1	2	32	18	0.7	30	From -16 to 90	Dark Grey/Green	
DBF7-M-A1-FG-DG	12000	300	400	92	+10/-10	Dm	15	Da1	2	32	18	0.7	30	From -16 to 90	Dark Grey/Green	
DBF8-M-A1-FG-DG	20000	400	500	97	+10/-10	Dm	15	Da1	2	39	22	0.7	30	From -16 to 90	Dark Grey/Green	



Model	Load Capacity Kg/pc	Length (L) mm	Width (B) mm	Height (H) at mean position (mm)	Adjustment Range (mm)	Bottom pad Type	Bottom pad Thickness (mm)	Top pad Type	Top pad Thickness (mm)	SW1 (mm)	SW2 (mm)	Coeff. of Friction against Concrete	Natural Frequency at Max. Load (Hz)	Temperature Range (° C)	Color	Applications
DBF1-i-A2-FG-DG	1400	100	100	71	+3/-3	Di	25	Da2	8	19	10	0.8	7	From -16 to 90	Dark Grey/Green	Applications: Power Presses, Stamping Machines, Shearing Machines, Punching Machines. For machines with high vertical impact.
DBF2-i-A2-FG-DG	1800	115	115	77	+4/-4	Di	25	Da2	8	19	10	0.8	7	From -16 to 90	Dark Grey/Green	
DBF3-i-A2-FG-DG	2900	150	150	83	+5/-5	Di	25	Da2	8	22	12	0.8	7	From -16 to 90	Dark Grey/Green	
DBF4-i-A2-FG-DG	5200	200	200	83	+6/-6	Di	25	Da2	8	22	12	0.8	7	From -16 to 90	Dark Grey/Green	
DBF5-i-A2-FG-DG	6500	200	250	103	+9/-9	Di	25	Da2	8	27	14	0.8	7	From -16 to 90	Dark Grey/Green	
DBF6-i-A2-FG-DG	10000	250	320	108	+9/-9	Di	25	Da2	8	32	18	0.8	7	From -16 to 90	Dark Grey/Green	
DBF7-i-A2-FG-DG	15000	300	400	108	+10/-10	Di	25	Da2	8	32	18	0.8	7	From -16 to 90	Dark Grey/Green	
DBF8-i-A2-FG-DG	26000	400	500	113	+10/-10	Di	25	Da2	8	39	22	0.8	7	From -16 to 90	Dark Grey/Green	



**DBF1**



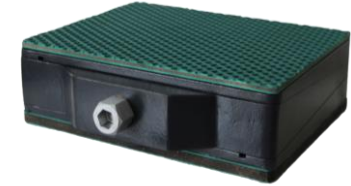
**DBF3**



**DBF5**

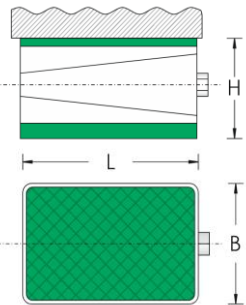


**DBF7**



**DBF8**

Model	Load Capacity Kg/pc	Length (L) mm	Width (B) mm	Height (H) at mean position (mm)	Adjustment Range (mm)	Bottom pad Type	Bottom pad Thickness (mm)	Top pad Type	Top pad Thickness (mm)	SW1 (mm)	SW2 (mm)	Coeff. of Friction against Concrete	Natural Frequency at Max. Load (Hz)	Temperature Range (° C)	Color	Applications
DBF1-p1-A1-FG-DG	400	100	100	55	+3/-3	Dp1	15	Da1	2	19	10	0.8	7	From -16 to 90	Dark Grey/Green	Applications: Power Presses, Stamping Machines, Shearing Machines, Punching Machines. For machines with high vertical impact.
DBF2-p1-A1-FG-DG	530	115	115	61	+4/-4	Dp1	15	Da1	2	19	10	0.8	7	From -16 to 90	Dark Grey/Green	
DBF3-p1-A1-FG-DG	900	150	150	67	+5/-5	Dp1	15	Da1	2	22	12	0.8	7	From -16 to 90	Dark Grey/Green	
DBF4-p1-A1-FG-DG	1600	200	200	67	+6/-6	Dp1	15	Da1	2	22	12	0.8	7	From -16 to 90	Dark Grey/Green	
DBF5-p1-A1-FG-DG	2000	200	250	87	+9/-9	Dp1	15	Da1	2	27	14	0.8	7	From -16 to 90	Dark Grey/Green	
DBF6-p1-A1-FG-DG	3200	250	320	92	+9/-9	Dp1	15	Da1	2	32	18	0.8	7	From -16 to 90	Dark Grey/Green	
DBF7-p1-A1-FG-DG	4800	300	400	92	+10/-10	Dp1	15	Da1	2	32	18	0.8	7	From -16 to 90	Dark Grey/Green	
DBF8-p1-A1-FG-DG	8000	400	500	97	+10/-10	Dp1	15	Da1	2	39	22	0.8	7	From -16 to 90	Dark Grey/Green	
DBF1-p2-A1-FG-DG	500	100	100	60	+3/-3	Dp2	20	Da1	2	19	10	0.8	12	From -16 to 90	Dark Grey/Green	Applications: Medium Presses, Punching Presses, Centreless Grinding Machines, Gear Shapers, High Speed Machines on upper floors.
DBF2-p2-A1-FG-DG	660	115	115	66	+4/-4	Dp2	20	Da1	2	19	10	0.8	12	From -16 to 90	Dark Grey/Green	
DBF3-p2-A1-FG-DG	1120	150	150	72	+5/-5	Dp2	20	Da1	2	22	12	0.8	12	From -16 to 90	Dark Grey/Green	
DBF4-p2-A1-FG-DG	2000	200	200	72	+6/-6	Dp2	20	Da1	2	22	12	0.8	12	From -16 to 90	Dark Grey/Green	
DBF5-p2-A1-FG-DG	2500	200	250	92	+9/-9	Dp2	20	Da1	2	27	14	0.8	12	From -16 to 90	Dark Grey/Green	
DBF6-p2-A1-FG-DG	4000	250	320	97	+9/-9	Dp2	20	Da1	2	32	18	0.8	12	From -16 to 90	Dark Grey/Green	
DBF7-p2-A1-FG-DG	6000	300	400	97	+10/-10	Dp2	20	Da1	2	32	18	0.8	12	From -16 to 90	Dark Grey/Green	
DBF8-p2-A1-FG-DG	10000	400	500	102	+10/-10	Dp2	20	Da1	2	39	22	0.8	12	From -16 to 90	Dark Grey/Green	
DBF1-p3-A1-FG-DG	600	100	100	64	+3/-3	Dp3	24	Da1	2	19	10	0.8	7	From -16 to 90	Dark Grey/Green	Applications: Tool Room Machines on suspended floors, Light Weight Presses, Compressors etc.
DBF2-p3-A1-FG-DG	790	115	115	70	+4/-4	Dp3	24	Da1	2	19	10	0.8	7	From -16 to 90	Dark Grey/Green	
DBF3-p3-A1-FG-DG	1350	150	150	76	+5/-5	Dp3	24	Da1	2	22	12	0.8	7	From -16 to 90	Dark Grey/Green	
DBF4-p3-A1-FG-DG	2400	200	200	76	+6/-6	Dp3	24	Da1	2	22	12	0.8	7	From -16 to 90	Dark Grey/Green	
DBF5-p3-A1-FG-DG	3000	200	250	96	+9/-9	Dp3	24	Da1	2	27	14	0.8	7	From -16 to 90	Dark Grey/Green	
DBF6-p3-A1-FG-DG	4800	250	320	101	+9/-9	Dp3	24	Da1	2	32	18	0.8	7	From -16 to 90	Dark Grey/Green	
DBF7-p3-A1-FG-DG	7200	300	400	101	+10/-10	Dp3	24	Da1	2	32	18	0.8	7	From -16 to 90	Dark Grey/Green	
DBF8-p3-A1-FG-DG	12000	400	500	106	+10/-10	Dp3	24	Da1	2	39	22	0.8	7	From -16 to 90	Dark Grey/Green	



**DBF1**



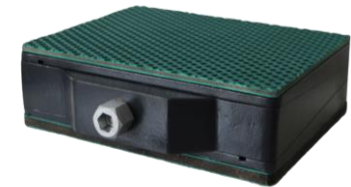
**DBF3**



**DBF5**



**DBF7**



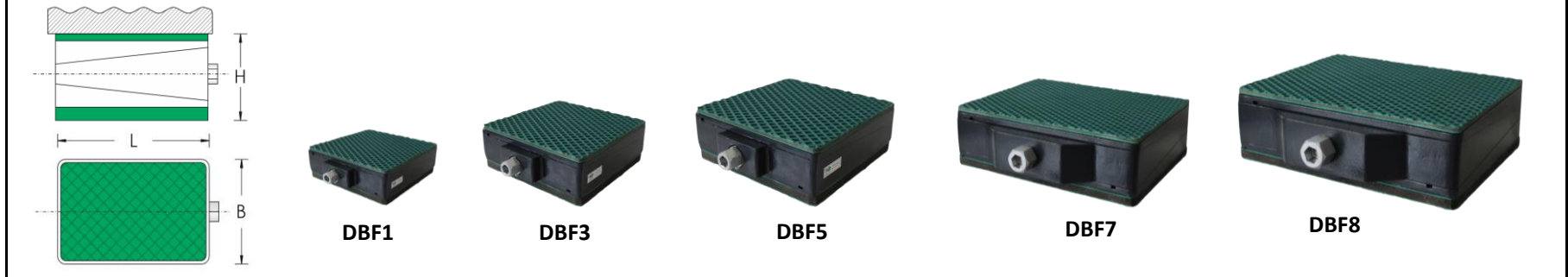
**DBF8**

Model	Load Capacity Kg/pc	Length (L) mm	Width (B) mm	Height (H) at mean position (mm)	Adjustment Range (mm)	Bottom pad Type	Bottom pad Thickness (mm)	Top pad Type	Top pad Thickness (mm)	SW1 (mm)	SW2 (mm)	Coeff. of Friction against Concrete	Natural Frequency at Max. Load (Hz)	Temperature Range (° C)	Color	Applications
DBF1-s1-A1-FG-DG	500	100	100	60	+3/-3	Ds1	20	Da1	2	19	10	0.8	15	From -16 to 90	Dark Grey/Green	Applications: Tool Room Machines, Plastic Injection Moulding Machines, Pressure Die Casting Machines, Shaper, Printing and Textile Machines etc.
DBF2-s1-A1-FG-DG	600	115	115	66	+4/-4	Ds1	20	Da1	2	19	10	0.8	15	From -16 to 90	Dark Grey/Green	
DBF3-s1-A1-FG-DG	1000	150	150	72	+5/-5	Ds1	20	Da1	2	22	12	0.8	15	From -16 to 90	Dark Grey/Green	
DBF4-s1-A1-FG-DG	1800	200	200	72	+6/-6	Ds1	20	Da1	2	22	12	0.8	15	From -16 to 90	Dark Grey/Green	
DBF5-s1-A1-FG-DG	2200	200	250	92	+9/-9	Ds1	20	Da1	2	27	14	0.8	15	From -16 to 90	Dark Grey/Green	
DBF6-s1-A1-FG-DG	3500	250	320	97	+9/-9	Ds1	20	Da1	2	32	18	0.8	15	From -16 to 90	Dark Grey/Green	
DBF7-s1-A1-FG-DG	5200	300	400	97	+10/-10	Ds1	20	Da1	2	32	18	0.8	15	From -16 to 90	Dark Grey/Green	
DBF8-s1-A1-FG-DG	9500	400	500	102	+10/-10	Ds1	20	Da1	2	39	22	0.8	15	From -16 to 90	Dark Grey/Green	
DBF1-s2-A1-FG-DG	800	100	100	65	+3/-3	Ds2	25	Da1	2	19	10	0.8	8	From -16 to 90	Dark Grey/Green	Applications: Power Presses, Stamping Machines, Shearing Machines, Punching Machines. For machines with high vertical impact.
DBF2-s2-A1-FG-DG	950	115	115	71	+4/-4	Ds2	25	Da1	2	19	10	0.8	8	From -16 to 90	Dark Grey/Green	
DBF3-s2-A1-FG-DG	1600	150	150	77	+5/-5	Ds2	25	Da1	2	22	12	0.8	8	From -16 to 90	Dark Grey/Green	
DBF4-s2-A1-FG-DG	2800	200	200	77	+6/-6	Ds2	25	Da1	2	22	12	0.8	8	From -16 to 90	Dark Grey/Green	
DBF5-s2-A1-FG-DG	3500	200	250	97	+9/-9	Ds2	25	Da1	2	27	14	0.8	8	From -16 to 90	Dark Grey/Green	
DBF6-s2-A1-FG-DG	5500	250	320	102	+9/-9	Ds2	25	Da1	2	32	18	0.8	8	From -16 to 90	Dark Grey/Green	
DBF7-s2-A1-FG-DG	8500	300	400	102	+10/-10	Ds2	25	Da1	2	32	18	0.8	8	From -16 to 90	Dark Grey/Green	
DBF8-s2-A1-FG-DG	14000	400	500	107	+10/-10	Ds2	25	Da1	2	39	22	0.8	8	From -16 to 90	Dark Grey/Green	



Model	Load Capacity Kg/pc	Length (L) mm	Width (B) mm	Height (H) at mean position (mm)	Adjustment Range (mm)	Bottom pad Type	Bottom pad Thickness (mm)	Top pad Type	Top pad Thickness (mm)	SW1 (mm)	SW2 (mm)	Coeff. of Friction against Concrete	Natural Frequency at Max. Load (Hz)	Temperature Range (° C)	Color	Applications
DBF1-hs1-A2-FG-DG	2000	100	100	111	+3/-3	Dhs1	65	Da2	8	19	10	0.8	6	From -16 to 90	Dark Grey/Green	Applications : Forging Hammers, Heavy Gen Sets, Heavy Industrial machines, Test Rigs, Heavy presses etc.
DBF2-hs1-A2-FG-DG	2640	115	115	117	+4/-4	Dhs1	65	Da2	8	19	10	0.8	6	From -16 to 90	Dark Grey/Green	
DBF3-hs1-A2-FG-DG	4500	150	150	123	+5/-5	Dhs1	65	Da2	8	22	12	0.8	6	From -16 to 90	Dark Grey/Green	
DBF4-hs1-A2-FG-DG	8000	200	200	123	+6/-6	Dhs1	65	Da2	8	22	12	0.8	6	From -16 to 90	Dark Grey/Green	
DBF5-hs1-A2-FG-DG	10000	200	250	143	+9/-9	Dhs1	65	Da2	8	27	14	0.8	6	From -16 to 90	Dark Grey/Green	
DBF6-hs1-A2-FG-DG	16000	250	320	148	+9/-9	Dhs1	65	Da2	8	32	18	0.8	6	From -16 to 90	Dark Grey/Green	
DBF7-hs1-A2-FG-DG	24000	300	400	148	+10/-10	Dhs1	65	Da2	8	32	18	0.8	6	From -16 to 90	Dark Grey/Green	
DBF8-hs1-A2-FG-DG	40000	400	500	153	+10/-10	Dhs1	65	Da2	8	39	22	0.8	6	From -16 to 90	Dark Grey/Green	
DBF1-hs2-A1-FG-DG	800	100	100	105	+3/-3	Dhs2	65	Da1	2	19	10	0.8	4	From -16 to 90	Dark Grey/Green	Applications : Forging Hammers, Heavy Gen Sets, Heavy Industrial machines, Test Rigs, Heavy presses, crushers etc.
DBF2-hs2-A1-FG-DG	1060	115	115	111	+4/-4	Dhs2	65	Da1	2	19	10	0.8	4	From -16 to 90	Dark Grey/Green	
DBF3-hs2-A1-FG-DG	1800	150	150	117	+5/-5	Dhs2	65	Da1	2	22	12	0.8	4	From -16 to 90	Dark Grey/Green	
DBF4-hs2-A1-FG-DG	3200	200	200	117	+6/-6	Dhs2	65	Da1	2	22	12	0.8	4	From -16 to 90	Dark Grey/Green	
DBF5-hs2-A1-FG-DG	4000	200	250	137	+9/-9	Dhs2	65	Da1	2	27	14	0.8	4	From -16 to 90	Dark Grey/Green	
DBF6-hs2-A1-FG-DG	6400	250	320	142	+9/-9	Dhs2	65	Da1	2	32	18	0.8	4	From -16 to 90	Dark Grey/Green	
DBF7-hs2-A1-FG-DG	9600	300	400	142	+10/-10	Dhs2	65	Da1	2	32	18	0.8	4	From -16 to 90	Dark Grey/Green	
DBF8-hs2-A1-FG-DG	16000	400	500	147	+10/-10	Dhs2	65	Da1	2	39	22	0.8	4	From -16 to 90	Dark Grey/Green	
DBF1-hs3-A2-FG-DG	2800	100	100	96	+3/-3	Dhs3	50	Da2	8	19	10	0.8	7	From -16 to 90	Dark Grey/Green	Applications : Forging Hammers, Heavy Gen Sets, Heavy Industrial machines, Test Rigs, Heavy presses etc.
DBF2-hs3-A2-FG-DG	3700	115	115	102	+4/-4	Dhs3	50	Da2	8	19	10	0.8	7	From -16 to 90	Dark Grey/Green	
DBF3-hs3-A2-FG-DG	6300	150	150	108	+5/-5	Dhs3	50	Da2	8	22	12	0.8	7	From -16 to 90	Dark Grey/Green	
DBF4-hs3-A2-FG-DG	11200	200	200	108	+6/-6	Dhs3	50	Da2	8	22	12	0.8	7	From -16 to 90	Dark Grey/Green	
DBF5-hs3-A2-FG-DG	14000	200	250	128	+9/-9	Dhs3	50	Da2	8	27	14	0.8	7	From -16 to 90	Dark Grey/Green	
DBF6-hs3-A2-FG-DG	22400	250	320	133	+9/-9	Dhs3	50	Da2	8	32	18	0.8	7	From -16 to 90	Dark Grey/Green	
DBF7-hs3-A2-FG-DG	33600	300	400	133	+10/-10	Dhs3	50	Da2	8	32	18	0.8	7	From -16 to 90	Dark Grey/Green	

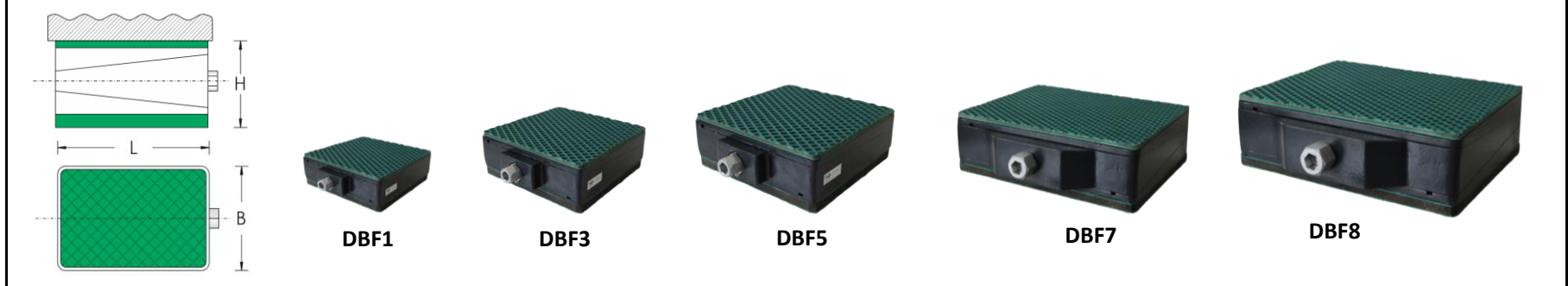
DBF8-hs3-A2-FG-DG	56000	400	500	138	+10/-10	Dhs3	50	Da2	8	39	22	0.8	7	From -16 to 90	Dark Grey/Green	Applications : Forging Hammers, Heavy Gen Sets, Heavy Industrial machines, Test Rigs, Heavy presses, crushers etc.
DBF1-hs4-A1-FG-DG	1200	100	100	90	+3/-3	Dhs4	50	Da1	2	19	10	0.8	5	From -16 to 90	Dark Grey/Green	
DBF2-hs4-A1-FG-DG	1580	115	115	96	+4/-4	Dhs4	50	Da1	2	19	10	0.8	5	From -16 to 90	Dark Grey/Green	
DBF3-hs4-A1-FG-DG	2700	150	150	102	+5/-5	Dhs4	50	Da1	2	22	12	0.8	5	From -16 to 90	Dark Grey/Green	
DBF4-hs4-A1-FG-DG	4800	200	200	102	+6/-6	Dhs4	50	Da1	2	22	12	0.8	5	From -16 to 90	Dark Grey/Green	
DBF5-hs4-A1-FG-DG	6000	200	250	122	+9/-9	Dhs4	50	Da1	2	27	14	0.8	5	From -16 to 90	Dark Grey/Green	
DBF6-hs4-A1-FG-DG	9600	250	320	127	+9/-9	Dhs4	50	Da1	2	32	18	0.8	5	From -16 to 90	Dark Grey/Green	
DBF7-hs4-A1-FG-DG	14400	300	400	127	+10/-10	Dhs4	50	Da1	2	32	18	0.8	5	From -16 to 90	Dark Grey/Green	
DBF8-hs4-A1-FG-DG	24000	400	500	132	+10/-10	Dhs4	50	Da1	2	39	22	0.8	5	From -16 to 90	Dark Grey/Green	
DBF1-hs5-A2-FG-DG	2800	100	100	126	+3/-3	Dhs5	80	Da2	8	19	10	0.8	5	From -16 to 90	Dark Grey/Green	Applications : Forging Hammers, Heavy Gen Sets, Heavy Industrial machines, Test Rigs, Heavy presses etc.
DBF2-hs5-A2-FG-DG	3700	115	115	132	+4/-4	Dhs5	80	Da2	8	19	10	0.8	5	From -16 to 90	Dark Grey/Green	
DBF3-hs5-A2-FG-DG	6300	150	150	138	+5/-5	Dhs5	80	Da2	8	22	12	0.8	5	From -16 to 90	Dark Grey/Green	
DBF4-hs5-A2-FG-DG	11200	200	200	138	+6/-6	Dhs5	80	Da2	8	22	12	0.8	5	From -16 to 90	Dark Grey/Green	
DBF5-hs5-A2-FG-DG	14000	200	250	158	+9/-9	Dhs5	80	Da2	8	27	14	0.8	5	From -16 to 90	Dark Grey/Green	
DBF6-hs5-A2-FG-DG	22400	250	320	163	+9/-9	Dhs5	80	Da2	8	32	18	0.8	5	From -16 to 90	Dark Grey/Green	
DBF7-hs5-A2-FG-DG	33600	300	400	163	+10/-10	Dhs5	80	Da2	8	32	18	0.8	5	From -16 to 90	Dark Grey/Green	
DBF8-hs5-A2-FG-DG	56000	400	500	168	+10/-10	Dhs5	80	Da2	8	39	22	0.8	5	From -16 to 90	Dark Grey/Green	



Model	Load Capacity Kg/pc	Length (L) mm	Width (B) mm	Height (H) at mean position (mm)	Adjustment Range (mm)	Bottom pad Type	Bottom pad Thickness (mm)	Top pad Type	Top pad Thickness (mm)	SW1 (mm)	SW2 (mm)	Coeff. of Friction against Concrete	Natural Frequency at Max. Load (Hz)	Temperature Range (° C)	Color	Applications
DBF1-h-A2-FG-DG	3000	100	100	61	+3/-3	Dh	15	Da2	8	19	10	0.6	45	From -16 to 90	Dark Grey/Green	Applications : Very Heavy and long bed machines, long machining centres, planners etc.
DBF2-h-A2-FG-DG	3970	115	115	67	+4/-4	Dh	15	Da2	8	19	10	0.6	45	From -16 to 90	Dark Grey/Green	
DBF3-h-A2-FG-DG	6750	150	150	73	+5/-5	Dh	15	Da2	8	22	12	0.6	45	From -16 to 90	Dark Grey/Green	
DBF4-h-A2-FG-DG	12000	200	200	73	+6/-6	Dh	15	Da2	8	22	12	0.6	45	From -16 to 90	Dark Grey/Green	
DBF5-h-A2-FG-DG	15000	200	250	93	+9/-9	Dh	15	Da2	8	27	14	0.6	45	From -16 to 90	Dark Grey/Green	
DBF6-h-A2-FG-DG	24000	250	320	98	+9/-9	Dh	15	Da2	8	32	18	0.6	45	From -16 to 90	Dark Grey/Green	
DBF7-h-A2-FG-DG	36000	300	400	98	+10/-10	Dh	15	Da2	8	32	18	0.6	45	From -16 to 90	Dark Grey/Green	
DBF8-h-A2-FG-DG	60000	400	500	103	+10/-10	Dh	15	Da2	8	39	22	0.6	45	From -16 to 90	Dark Grey/Green	



Model	Load Capacity Kg/pc	Length (L) mm	Width (B) mm	Height (H) at mean position (mm)	Adjustment Range (mm)	Bottom pad Type	Bottom pad Thickness (mm)	Top pad Type	Top pad Thickness (mm)	SW1 (mm)	SW2 (mm)	Coeff. of Friction against Concrete	Natural Frequency at Max. Load (Hz)	Temperature Range (° C)	Color	Applications
DBF1-A1-A1-FG-DG	1800	100	100	42	+3/-3	Da1	2	Da1	2	19	10	0.8	70	From -16 to 90	Dark Grey/Green	
DBF2-A1-A1-FG-DG	2300	115	115	48	+4/-4	Da1	2	Da1	2	19	10	0.8	70	From -16 to 90	Dark Grey/Green	
DBF3-A1-A1-FG-DG	4000	150	150	54	+5/-5	Da1	2	Da1	2	22	12	0.8	70	From -16 to 90	Dark Grey/Green	
DBF4-A1-A1-FG-DG	7200	200	200	54	+6/-6	Da1	2	Da1	2	22	12	0.8	70	From -16 to 90	Dark Grey/Green	
DBF5-A1-A1-FG-DG	9000	200	250	74	+9/-9	Da1	2	Da1	2	27	14	0.8	70	From -16 to 90	Dark Grey/Green	
DBF6-A1-A1-FG-DG	14400	250	320	79	+9/-9	Da1	2	Da1	2	32	18	0.8	70	From -16 to 90	Dark Grey/Green	
DBF7-A1-A1-FG-DG	21600	300	400	79	+10/-10	Da1	2	Da1	2	32	18	0.8	70	From -16 to 90	Dark Grey/Green	
DBF8-A1-A1-FG-DG	36000	400	500	84	+10/-10	Da1	2	Da1	2	39	22	0.8	70	From -16 to 90	Dark Grey/Green	



Model	Load Capacity Kg/pc	Length (L) mm	Width (B) mm	Height (H) at mean position (mm)	Adjustment Range (mm)	Bottom pad Type	Bottom pad Thickness (mm)	Top pad Type	Top pad Thickness (mm)	SW1 (mm)	SW2 (mm)	Coeff. of Friction against Concrete	Natural Frequency at Max. Load (Hz)	Temperature Range (° C)	Color	Applications
DBF1-A2-A2-FG-DG	1000	100	100	54	+3/-3	Da2	8	Da2	8	19	10	0.9	45	From -16 to 90	Dark Grey/Green	
DBF2-A2-A2-FG-DG	1300	115	115	60	+4/-4	Da2	8	Da2	8	19	10	0.9	45	From -16 to 90	Dark Grey/Green	
DBF3-A2-A2-FG-DG	2250	150	150	66	+5/-5	Da2	8	Da2	8	22	12	0.9	45	From -16 to 90	Dark Grey/Green	
DBF4-A2-A2-FG-DG	4000	200	200	66	+6/-6	Da2	8	Da2	8	22	12	0.9	45	From -16 to 90	Dark Grey/Green	
DBF5-A2-A2-FG-DG	5000	200	250	86	+9/-9	Da2	8	Da2	8	27	14	0.9	45	From -16 to 90	Dark Grey/Green	
DBF6-A2-A2-FG-DG	8000	250	320	91	+9/-9	Da2	8	Da2	8	32	18	0.9	45	From -16 to 90	Dark Grey/Green	
DBF7-A2-A2-FG-DG	12000	300	400	91	+10/-10	Da2	8	Da2	8	32	18	0.9	45	From -16 to 90	Dark Grey/Green	
DBF8-A2-A2-FG-DG	20000	400	500	96	+10/-10	Da2	8	Da2	8	39	22	0.9	45	From -16 to 90	Dark Grey/Green	