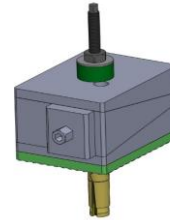
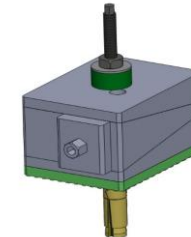


DTHOP1



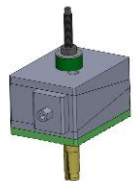
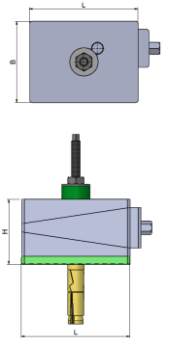
DTHOP2



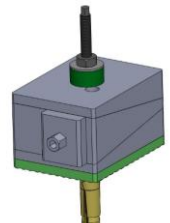
DTHOP3

Dynemech Wedge mounts, Series DTHOP-150 mounts are sturdy in construction. Designed for machines with high axial dynamic forces and must be anchored to the ground. High levelling adjustment avoids the need of extra shims for installations on steep slope surfaces. DTHOP has a height of 150mm to meet TPM requirements. Respective insulation plates are assembled to meet various applications.

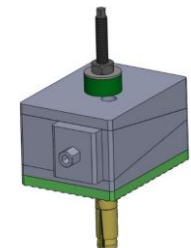
| Model | Load Capacity Kg/pc | Length (L) mm | Width (B) mm | Height (H) at mean position (mm) | BORE* (mm) | Adjustment Range (mm) | Bottom pad Type | Bottom pad Thickness (mm) | SW1 (mm) | SW2 (mm) | Coeff. of Friction against Concrete | Natural Frequency at Max. Load (Hz) | Temperature Range (°C) | Color | Applications |
|-----------------------|---------------------|---------------|--------------|----------------------------------|------------|-----------------------|-----------------|---------------------------|----------|----------|-------------------------------------|-------------------------------------|------------------------|-----------------|---|
| DTHOP1-u-25T-FG-DG | 2250 | 200 | 125 | 150 | 25 | +8/-8 | Du | 15 | 22 | 12 | 0.9 | 18 | From -16 to 90 | Dark Grey/Green | Applications: Tool Room Machines, Plastic Injection |
| DTHOP2-u-25T-FG-DG | 2700 | 200 | 150 | 150 | 25 | +10/-10 | Du | 15 | 22 | 12 | 0.9 | 18 | From -16 to 90 | Dark Grey/Green | Moulding Machines, Pressure Die Casting Machines, Shaper, |
| DTHOP3-u-28T-FG-DG | 4200 | 280 | 170 | 150 | 28 | +12.5/-12.5 | Du | 15 | 39 | 22 | 0.9 | 18 | From -16 to 90 | Dark Grey/Green | Printing and Textile Machines etc. |
| DTHOP1-u-10-25T-FG-DG | 2250 | 200 | 125 | 145 | 25 | +8/-8 | Du-10 | 10 | 22 | 12 | 0.9 | 25 | From -16 to 90 | Dark Grey/Green | Applications: Tool Room Machines, Plastic Injection |
| DTHOP2-u-10-25T-FG-DG | 2700 | 200 | 150 | 145 | 25 | +10/-10 | Du-10 | 10 | 22 | 12 | 0.9 | 25 | From -16 to 90 | Dark Grey/Green | Moulding Machines, Pressure Die Casting Machines, Shaper, |
| DTHOP3-u-10-28T-FG-DG | 4200 | 280 | 170 | 145 | 28 | +12.5/-12.5 | Du-10 | 10 | 39 | 22 | 0.9 | 25 | From -16 to 90 | Dark Grey/Green | Printing and Textile Machines etc. |
| DTHOP1-u-12-25T-FG-DG | 2250 | 200 | 125 | 147 | 25 | +8/-8 | Du-12 | 12 | 22 | 12 | 0.9 | 20 | From -16 to 90 | Dark Grey/Green | Applications: Tool Room Machines, Plastic Injection |
| DTHOP2-u-12-25T-FG-DG | 2700 | 200 | 150 | 147 | 25 | +10/-10 | Du-12 | 12 | 22 | 12 | 0.9 | 20 | From -16 to 90 | Dark Grey/Green | Moulding Machines, Pressure Die Casting Machines, Shaper, |
| DTHOP3-u-12-28T-FG-DG | 4200 | 280 | 170 | 147 | 28 | +12.5/-12.5 | Du-12 | 12 | 39 | 22 | 0.9 | 20 | From -16 to 90 | Dark Grey/Green | Printing and Textile Machines etc. |



DTHOP1

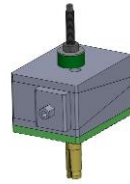
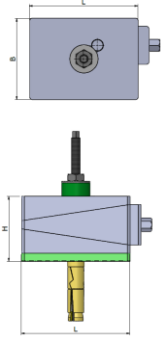


DTHOP2

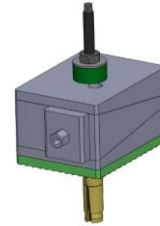


DTHOP3

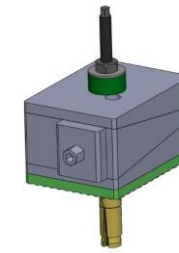
| Model | Load Capacity Kg/pc | Length (L) mm | Width (B) mm | Height (H) at mean position (mm) | BORE* (mm) | Adjustment Range (mm) | Bottom pad Type | Bottom pad Thickness (mm) | SW1 (mm) | SW2 (mm) | Coeff. of Friction against Concrete | Natural Frequency at Max. Load (Hz) | Temperature Range (°C) | Color | Applications |
|--------------------|---------------------|---------------|--------------|----------------------------------|------------|-----------------------|-----------------|---------------------------|----------|----------|-------------------------------------|-------------------------------------|------------------------|-----------------|--|
| DTHOP1-m-25T-FG-DG | 2500 | 200 | 125 | 150 | 25 | +8/-8 | Dm | 15 | 22 | 12 | 0.7 | 30 | From -16 to 90 | Dark Grey/Green | Applications: Power Presses, Stamping Machines, Shearing |
| DTHOP2-m-25T-FG-DG | 3000 | 200 | 150 | 150 | 25 | +10/-10 | Dm | 15 | 22 | 12 | 0.7 | 30 | From -16 to 90 | Dark Grey/Green | Machines, Punching Machines. For machines with high |
| DTHOP3-m-28T-FG-DG | 4600 | 280 | 170 | 150 | 28 | +12.5/-12.5 | Dm | 15 | 39 | 22 | 0.7 | 30 | From -16 to 90 | Dark Grey/Green | vertical impact. |



DTHOP1

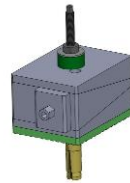
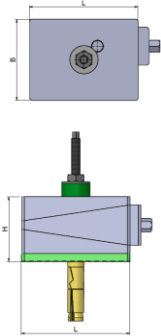


DTHOP2

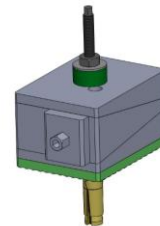


DTHOP3

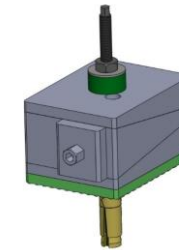
| Model | Load Capacity Kg/pc | Length (L) mm | Width (B) mm | Height (H) at mean position (mm) | BORE* (mm) | Adjustment Range (mm) | Bottom pad Type | Bottom pad Thickness (mm) | SW1 (mm) | SW2 (mm) | Coeff. of Friction against Concrete | Natural Frequency at Max. Load (Hz) | Temperature Range (°C) | Color | Applications |
|--------------------|---------------------|---------------|--------------|----------------------------------|------------|-----------------------|-----------------|---------------------------|----------|----------|-------------------------------------|-------------------------------------|------------------------|-----------------|---|
| DTHOP1-i-25T-FG-DG | 3500 | 200 | 125 | 160 | 25 | +8/-8 | Di | 25 | 22 | 12 | 0.8 | 7 | From -16 to 90 | Dark Grey/Green | Applications: Power Presses, Stamping Machines, Shearing Machines, Punching Machines. For machines with high vertical impact. |
| DTHOP2-i-25T-FG-DG | 4200 | 200 | 150 | 160 | 25 | +10/-10 | Di | 25 | 22 | 12 | 0.8 | 7 | From -16 to 90 | Dark Grey/Green | |
| DTHOP3-i-28T-FG-DG | 6400 | 280 | 170 | 160 | 28 | +12.5/-12.5 | Di | 25 | 39 | 22 | 0.8 | 7 | From -16 to 90 | Dark Grey/Green | |



DTHOP1

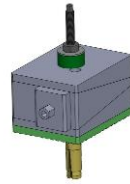
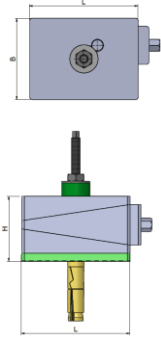


DTHOP2

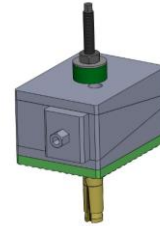


DTHOP3

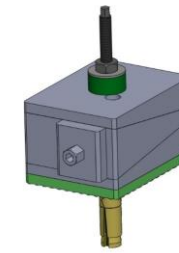
| Model | Load Capacity Kg/pc | Length (L) mm | Width (B) mm | Height (H) at mean position (mm) | BORE* (mm) | Adjustment Range (mm) | Bottom pad Type | Bottom pad Thickness (mm) | SW1 (mm) | SW2 (mm) | Coeff. of Friction against Concrete | Natural Frequency at Max. Load (Hz) | Temperature Range (°C) | Color | Applications |
|---------------------|---------------------|---------------|--------------|----------------------------------|------------|-----------------------|-----------------|---------------------------|----------|----------|-------------------------------------|-------------------------------------|------------------------|-----------------|--|
| DTHOP1-p1-25T-FG-DG | 1000 | 200 | 125 | 150 | 25 | +8/-8 | Dp1 | 15 | 22 | 12 | 0.8 | 7 | From -16 to 90 | Dark Grey/Green | Applications: Power Presses, Stamping Machines, Shearing Machines, Punching Machines. For machines with high vertical impact. |
| DTHOP2-p1-25T-FG-DG | 1200 | 200 | 150 | 150 | 25 | +10/-10 | Dp1 | 15 | 22 | 12 | 0.8 | 7 | From -16 to 90 | Dark Grey/Green | |
| DTHOP3-p1-28T-FG-DG | 1900 | 280 | 170 | 150 | 28 | +12.5/-12.5 | Dp1 | 15 | 39 | 22 | 0.8 | 7 | From -16 to 90 | Dark Grey/Green | |
| DTHOP1-p2-25T-FG-DG | 1250 | 200 | 125 | 155 | 25 | +8/-8 | Dp2 | 20 | 22 | 12 | 0.8 | 12 | From -16 to 90 | Dark Grey/Green | Applications: Medium Presses, Punching Presses, Centreless Grinding Machines, Gear Shapers, High Speed Machines on upper floors. |
| DTHOP2-p2-25T-FG-DG | 1500 | 200 | 150 | 155 | 25 | +10/-10 | Dp2 | 20 | 22 | 12 | 0.8 | 12 | From -16 to 90 | Dark Grey/Green | |
| DTHOP3-p2-28T-FG-DG | 2380 | 280 | 170 | 155 | 28 | +12.5/-12.5 | Dp2 | 20 | 39 | 22 | 0.8 | 12 | From -16 to 90 | Dark Grey/Green | |
| DTHOP1-p3-25T-FG-DG | 1500 | 200 | 125 | 159 | 25 | +8/-8 | Dp3 | 24 | 22 | 12 | 0.8 | 7 | From -16 to 90 | Dark Grey/Green | Applications: Tool Room Machines on suspended floors, Light Weight Presses, Compressors etc. |
| DTHOP2-p3-25T-FG-DG | 1800 | 200 | 150 | 159 | 25 | +10/-10 | Dp3 | 24 | 22 | 12 | 0.8 | 7 | From -16 to 90 | Dark Grey/Green | |
| DTHOP3-p3-28T-FG-DG | 2860 | 280 | 170 | 159 | 28 | +12.5/-12.5 | Dp3 | 24 | 39 | 22 | 0.8 | 7 | From -16 to 90 | Dark Grey/Green | |



DTHOP1

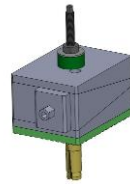
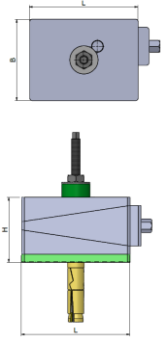


DTHOP2

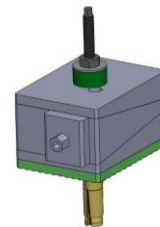


DTHOP3

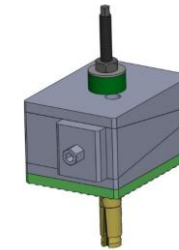
| Model | Load Capacity Kg/pc | Length (L) mm | Width (B) mm | Height (H) at mean position (mm) | BORE* (mm) | Adjustment Range (mm) | Bottom pad Type | Bottom pad Thickness (mm) | SW1 (mm) | SW2 (mm) | Coeff. of Friction against Concrete | Natural Frequency at Max. Load (Hz) | Temperature Range (°C) | Color | Applications |
|---------------------|---------------------|---------------|--------------|----------------------------------|------------|-----------------------|-----------------|---------------------------|----------|----------|-------------------------------------|-------------------------------------|------------------------|-----------------|--|
| DTHOP1-s1-25T-FG-DG | 1250 | 200 | 125 | 155 | 25 | +8/-8 | Ds1 | 20 | 22 | 12 | 0.8 | 15 | From -16 to 90 | Dark Grey/Green | Applications: Tool Room Machines, Plastic Injection Moulding Machines, Pressure Die Casting Machines, Shaper, Printing and Textile Machines etc. |
| DTHOP2-s1-25T-FG-DG | 1500 | 200 | 150 | 155 | 25 | +10/-10 | Ds1 | 20 | 22 | 12 | 0.8 | 15 | From -16 to 90 | Dark Grey/Green | |
| DTHOP3-s1-28T-FG-DG | 2380 | 280 | 170 | 155 | 28 | +12.5/-12.5 | Ds1 | 20 | 39 | 22 | 0.8 | 15 | From -16 to 90 | Dark Grey/Green | Applications: Power Presses, Stamping Machines, Shearing Machines, Punching Machines. For machines with high vertical impact. |
| DTHOP1-s2-25T-FG-DG | 2000 | 200 | 125 | 160 | 25 | +8/-8 | Ds2 | 25 | 22 | 12 | 0.8 | 8 | From -16 to 90 | Dark Grey/Green | |
| DTHOP2-s2-25T-FG-DG | 2400 | 200 | 150 | 160 | 25 | +10/-10 | Ds2 | 25 | 22 | 12 | 0.8 | 8 | From -16 to 90 | Dark Grey/Green | |
| DTHOP3-s2-28T-FG-DG | 3800 | 280 | 170 | 160 | 28 | +12.5/-12.5 | Ds2 | 25 | 39 | 22 | 0.8 | 8 | From -16 to 90 | Dark Grey/Green | |



DTHOP1



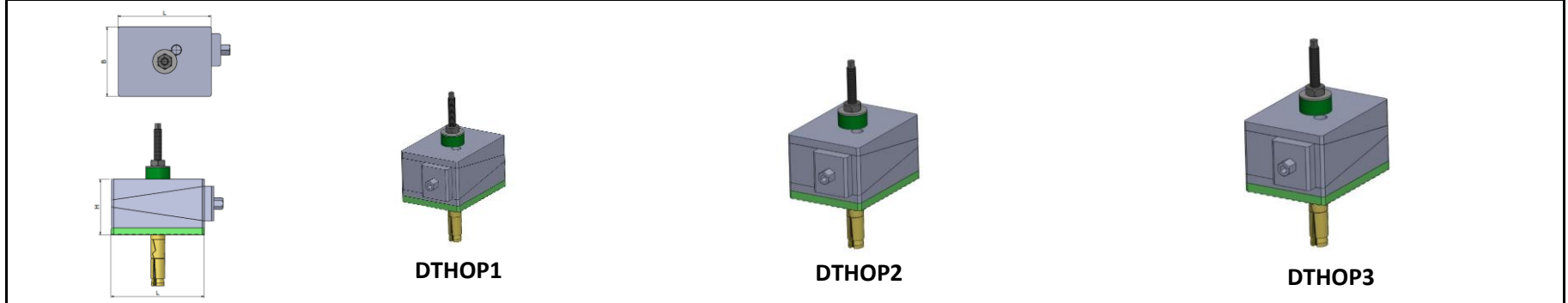
DTHOP2



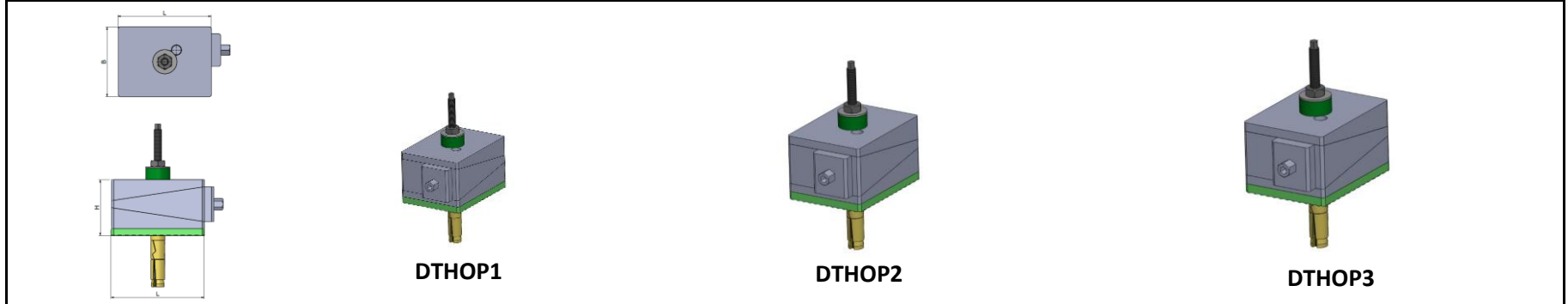
DTHOP3

| Model | Load Capacity Kg/pc | Length (L) mm | Width (B) mm | Height (H) at mean position (mm) | BORE* (mm) | Adjustment Range (mm) | Bottom pad Type | Bottom pad Thickness (mm) | SW1 (mm) | SW2 (mm) | Coeff. of Friction against Concrete | Natural Frequency at Max. Load (Hz) | Temperature Range (°C) | Color | Applications |
|----------------------|---------------------|---------------|--------------|----------------------------------|------------|-----------------------|-----------------|---------------------------|----------|----------|-------------------------------------|-------------------------------------|------------------------|-----------------|--|
| DTHOP1-hs1-25T-FG-DG | 5000 | 200 | 125 | 200 | 25 | +8/-8 | Dhs1 | 65 | 22 | 12 | 0.8 | 6 | From -16 to 90 | Dark Grey/Green | Applications : Forging Hammers, Heavy Gen Sets, Heavy Industrial machines, Test Rigs, Heavy presses etc. |
| DTHOP2-hs1-25T-FG-DG | 6000 | 200 | 150 | 200 | 25 | +10/-10 | Dhs1 | 65 | 22 | 12 | 0.8 | 6 | From -16 to 90 | Dark Grey/Green | |
| DTHOP3-hs1-28T-FG-DG | 9520 | 280 | 170 | 200 | 28 | +12.5/-12.5 | Dhs1 | 65 | 39 | 22 | 0.8 | 6 | From -16 to 90 | Dark Grey/Green | |
| DTHOP1-hs2-25T-FG-DG | 2000 | 200 | 125 | 200 | 25 | +8/-8 | Dhs2 | 65 | 22 | 12 | 0.8 | 4 | From -16 to 90 | Dark Grey/Green | Applications : Forging Hammers, Heavy Gen Sets, Heavy Industrial machines, Test Rigs, Heavy presses, crushers etc. |
| DTHOP2-hs2-25T-FG-DG | 2400 | 200 | 150 | 200 | 25 | +10/-10 | Dhs2 | 65 | 22 | 12 | 0.8 | 4 | From -16 to 90 | Dark Grey/Green | |
| DTHOP3-hs2-28T-FG-DG | 3800 | 280 | 170 | 200 | 28 | +12.5/-12.5 | Dhs2 | 65 | 39 | 22 | 0.8 | 4 | From -16 to 90 | Dark Grey/Green | |
| DTHOP1-hs3-25T-FG-DG | 7000 | 200 | 125 | 185 | 25 | +8/-8 | Dhs3 | 50 | 22 | 12 | 0.8 | 7 | From -16 to 90 | Dark Grey/Green | Applications : Forging Hammers, Heavy Gen Sets, Heavy Industrial machines, Test Rigs, Heavy presses etc. |
| DTHOP2-hs3-25T-FG-DG | 8400 | 200 | 150 | 185 | 25 | +10/-10 | Dhs3 | 50 | 22 | 12 | 0.8 | 7 | From -16 to 90 | Dark Grey/Green | |
| DTHOP3-hs3-28T-FG-DG | 13330 | 280 | 170 | 185 | 28 | +12.5/-12.5 | Dhs3 | 50 | 39 | 22 | 0.8 | 7 | From -16 to 90 | Dark Grey/Green | |
| DTHOP1-hs4-25T-FG-DG | 3000 | 200 | 125 | 185 | 25 | +8/-8 | Dhs4 | 50 | 22 | 12 | 0.8 | 5 | From -16 to 90 | Dark Grey/Green | Applications : Forging Hammers, Heavy Gen Sets, Heavy Industrial machines, Test Rigs, Heavy presses, crushers etc. |
| DTHOP2-hs4-25T-FG-DG | 3600 | 200 | 150 | 185 | 25 | +10/-10 | Dhs4 | 50 | 22 | 12 | 0.8 | 5 | From -16 to 90 | Dark Grey/Green | |
| DTHOP3-hs4-28T-FG-DG | 5700 | 280 | 170 | 185 | 28 | +12.5/-12.5 | Dhs4 | 50 | 39 | 22 | 0.8 | 5 | From -16 to 90 | Dark Grey/Green | |
| DTHOP1-hs5-25T-FG-DG | 7000 | 200 | 125 | 215 | 25 | +8/-8 | Dhs5 | 80 | 22 | 12 | 0.8 | 5 | From -16 to 90 | Dark Grey/Green | Applications : Forging Hammers, Heavy Gen Sets, Heavy |

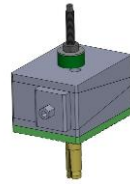
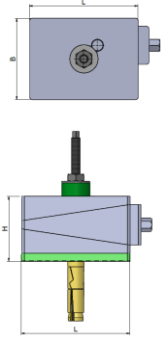
| | | | | | | | | | | | | | | | |
|----------------------|-------|-----|-----|-----|----|-------------|------|----|----|----|-----|---|----------------|-----------------|--|
| DTHOP2-hs5-25T-FG-DG | 8400 | 200 | 150 | 215 | 25 | +10/-10 | Dhs5 | 80 | 22 | 12 | 0.8 | 5 | From -16 to 90 | Dark Grey/Green | Applications : Forging hammers, heavy Gen Sets, heavy Industrial machines, Test Rigs, Heavy presses etc. |
| DTHOP3-hs5-28T-FG-DG | 13330 | 280 | 170 | 215 | 28 | +12.5/-12.5 | Dhs5 | 80 | 39 | 22 | 0.8 | 5 | From -16 to 90 | Dark Grey/Green | |



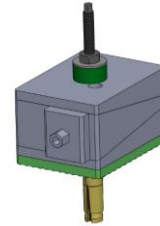
| Model | Load Capacity Kg/pc | Length (L) mm | Width (B) mm | Height (H) at mean position (mm) | BORE* (mm) | Adjustment Range (mm) | Bottom pad Type | Bottom pad Thickness (mm) | SW1 (mm) | SW2 (mm) | Coeff. of Friction against Concrete | Natural Frequency at Max. Load (Hz) | Temperature Range (°C) | Color | Applications |
|--------------------|---------------------|---------------|--------------|----------------------------------|------------|-----------------------|-----------------|---------------------------|----------|----------|-------------------------------------|-------------------------------------|------------------------|-----------------|--|
| DTHOP1-h-25T-FG-DG | 7500 | 200 | 125 | 150 | 25 | +8/-8 | Dh | 15 | 22 | 12 | 0.6 | 45 | From -16 to 90 | Dark Grey/Green | Applications : Very Heavy and long bed machines, long machining centres, planners etc. |
| DTHOP2-h-25T-FG-DG | 9000 | 200 | 150 | 150 | 25 | +10/-10 | Dh | 15 | 22 | 12 | 0.6 | 45 | From -16 to 90 | Dark Grey/Green | |
| DTHOP3-h-28T-FG-DG | 14000 | 280 | 170 | 150 | 28 | +12.5/-12.5 | Dh | 15 | 39 | 22 | 0.6 | 45 | From -16 to 90 | Dark Grey/Green | |



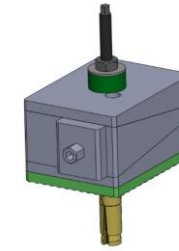
| Model | Load Capacity Kg/pc | Length (L) mm | Width (B) mm | Height (H) at mean position (mm) | BORE* (mm) | Adjustment Range (mm) | Bottom pad Type | Bottom pad Thickness (mm) | SW1 (mm) | SW2 (mm) | Coeff. of Friction against Concrete | Natural Frequency at Max. Load (Hz) | Temperature Range (°C) | Color | Applications |
|---------------------|---------------------|---------------|--------------|----------------------------------|------------|-----------------------|-----------------|---------------------------|----------|----------|-------------------------------------|-------------------------------------|------------------------|-----------------|--------------|
| DTHOP1-a1-25T-FG-DG | 4500 | 200 | 125 | 137 | 25 | +8/-8 | Da1 | 2 | 22 | 12 | 0.8 | 70 | From -16 to 90 | Dark Grey/Green | |
| DTHOP2-a1-25T-FG-DG | 5400 | 200 | 150 | 137 | 25 | +10/-10 | Da1 | 2 | 22 | 12 | 0.8 | 70 | From -16 to 90 | Dark Grey/Green | |
| DTHOP3-a1-28T-FG-DG | 8570 | 280 | 170 | 137 | 28 | +12.5/-12.5 | Da1 | 2 | 39 | 22 | 0.8 | 70 | From -16 to 90 | Dark Grey/Green | |



DTHOP1

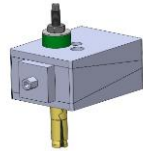
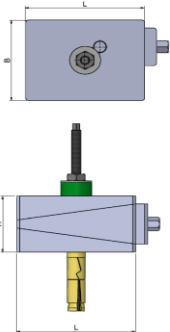


DTHOP2

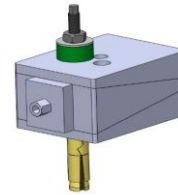


DTHOP3

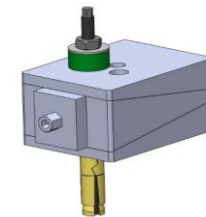
| Model | Load Capacity Kg/pc | Length (L) mm | Width (B) mm | Height (H) at mean position (mm) | BORE* (mm) | Adjustment Range (mm) | Bottom pad Type | Bottom pad Thickness (mm) | SW1 (mm) | SW2 (mm) | Coeff. of Friction against Concrete | Natural Frequency at Max. Load (Hz) | Temperature Range (°C) | Color | Applications |
|---------------------|---------------------|---------------|--------------|----------------------------------|------------|-----------------------|-----------------|---------------------------|----------|----------|-------------------------------------|-------------------------------------|------------------------|-----------------|--------------|
| DTHOP1-a2-25T-FG-DG | 2500 | 200 | 125 | 143 | 25 | +8/-8 | Da2 | 8 | 22 | 12 | 0.9 | 45 | From -16 to 90 | Dark Grey/Green | |
| DTHOP2-a2-25T-FG-DG | 3000 | 200 | 150 | 143 | 25 | +10/-10 | Da2 | 8 | 22 | 12 | 0.9 | 45 | From -16 to 90 | Dark Grey/Green | |
| DTHOP3-a2-28T-FG-DG | 4760 | 280 | 170 | 143 | 28 | +12.5/-12.5 | Da2 | 8 | 39 | 22 | 0.9 | 45 | From -16 to 90 | Dark Grey/Green | |



DTHOP1



DTHOP2



DTHOP3

| Model | Load Capacity Kg/pc | Length (L) mm | Width (B) mm | Height (H) at mean position (mm) | BORE* (mm) | Adjustment Range (mm) | Bottom pad Type | Bottom pad Thickness (mm) | SW1 (mm) | SW2 (mm) | Coeff. of Friction against Concrete | Natural Frequency at Max. Load (Hz) | Temperature Range (°C) | Color | Applications |
|------------------|---------------------|---------------|--------------|----------------------------------|------------|-----------------------|-----------------|---------------------------|----------|----------|-------------------------------------|-------------------------------------|------------------------|-----------------|---|
| DTHOP1-25T-FG-DG | 13000 | 200 | 125 | 135 | 25 | +8/-8 | X | X | 22 | 12 | X | X | From -16 to 90 | Dark Grey/Green | Applications : For levelling of all Precision Machines. |
| DTHOP2-25T-FG-DG | 16000 | 200 | 150 | 135 | 25 | +10/-10 | X | X | 22 | 12 | X | X | From -16 to 90 | Dark Grey/Green | |
| DTHOP3-28T-FG-DG | 23000 | 280 | 170 | 135 | 28 | +12.5/-12.5 | X | X | 39 | 22 | X | X | From -16 to 90 | Dark Grey/Green | |