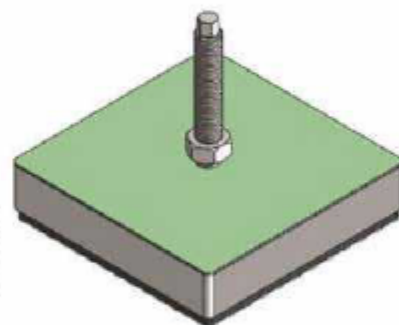
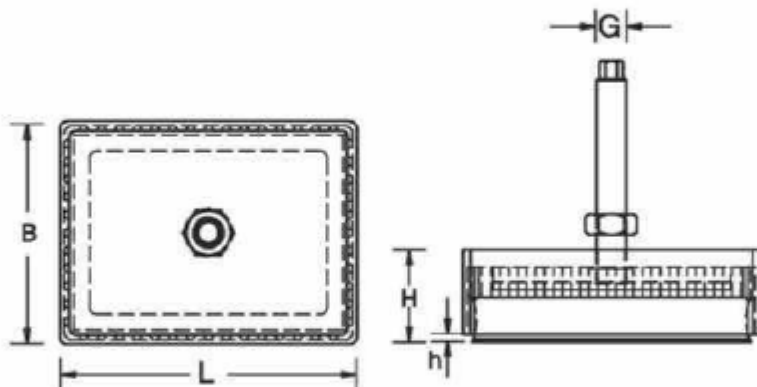




Series DLKR-03



Series DLKR-04

Dynemech Screw Support Mounts Series DLKR provides a large rectangular surface to support machines along with the levelling adjustment. The longer side is installed parallel to the line of operation of the horizontal force generated by the machine thus ensuring better grip and higher shock isolation.

S.No.	Model	Load Capacity (Kg/pc)	Length L (mm)	Width B (mm)	Height H (mm)	Thread Size G (mm)	h (mm)	Levelling Adjustment (mm)
1.	DLKR-03	4000	200	150	62	M20X1.5X150	5	32
2.	DLKR-04	5600	200	200	58	M20X2.5X150	20	15