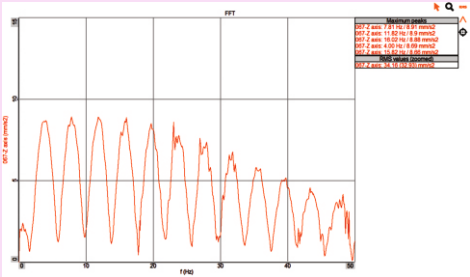
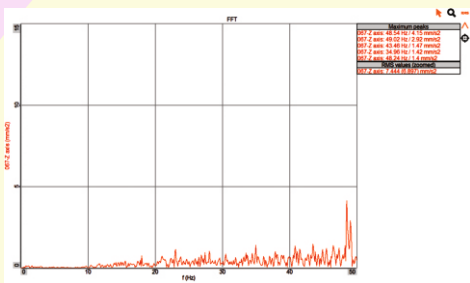




Before Installing of Dynemech
Antivibration Table



After Installing of Dynemech
Antivibration Table



Dynemech Anti-Vibration Table **Series DIT-E-LDLM** is suitable for all types of measuring and testing equipment used in the labs and clean rooms. These tables have a levelling adjustable leg. By rotating the nut, the level of the granite top can be maintained using precision spirit level/electronic level gauge. This levelling adjustment leg ensures the rigid placement of the frame on the ground. The second stage levelling is done using inverted DLM mounts between the frame top and the granite slab base. The nut of the inverted DLM is adjusted so that the granite rests securely on all contact points and there is no movement of the granite over the frame. The top is made from a heavy granite slab which ensures rigidity and keeps the system stable and ensures lower natural frequency and high damping efficiency. The flatness accuracy of these granites is of grade 'O' or 'OO' depending upon the application. The top surface of the granite slab is velvet finish to ensure smooth and lustrous finish. The frame of the table is made from the structural steel having grade IS 2062. Powder coating on the frame is done to maintain corrosion free service life of the table. The vibration isolation is achieved at 2 stages. The first stage is in the legs where the antivibration pads are assembled in the levelling leg which damps medium to high frequency vibrations. The second level of vibration isolation is achieved by using inverted DLM which also house single or double stack of DP1 vibration insulation plate which is tuned to low natural frequency and damps most of the incoming vibrations above 15 Hz. Optional sturdy castor wheels are also provided for heavy versions for easy relocation of the table. Keyboard, CPU and monitor stands, Drawers and cabinets can also be accommodated in these tables as per the application requirements. These tables undergo a modern manufacturing process and rigorous testing before being supplied to customers. The entire process is carried out in our dedicated in-house facility.

APPLICATIONS:

- Precision Instruments: Balances, Galvanometers, Electronic Microscopes, Atomic Absorption Spectrophotometers.
- Laboratories: Chemical analysis, food sample testing, scientific research.
- Industries: Pharmaceuticals, Food and Beverage, Chemicals.
- Semiconductor Manufacturing: Precision and accuracy in R&D.
- Weighing Experiments: High-precision balances and measuring instruments.
- Scientific Applications: Metrology Equipment , Thermogravimetric Analysis (TGA) , Digital Hardness Testers, HighResolution Microscopes, Surface Roughness Testers.

Sl. No.	Model	Load (Kg.)	Length (mm)	Width (mm)	Height at mean position (mm)	Granite Table Top Thickness (mm)	Natural Frequency (Hz)
1.	DIT-E-LDLM-01	upto 250	500	500	800-1000	80	7-8
2.	DIT-E-LDLM-01-S1	upto 250	630	630	800-1000	80	7-8
3.	DIT-E-LDLM-02	upto 450	750	500	800-1000	80	7-8
4.	DIT-E-LDLM-03	upto 1250	900	600	800-1000	100	7-8
5.	DIT-E-LDLM-04	upto 1250	1000	800	800-1000	150	7-8
6.	DIT-E-LDLM-05	upto 1250	1200	1000	800-1000	150	7-8
7.	DIT-E-LDLM-06	upto 1500	1800	1500	800-1000	150	7-8

OTHER TECHNICAL SPECIFICATIONS :

A. Pneumatic Legs Specifications		
1.	Levelling	with the help of bottom DLM Mounts
2.	Height Adjustment	8 mm
3.	Vibration Isolation Efficiency	65-70%