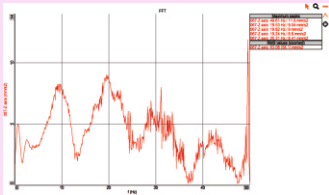
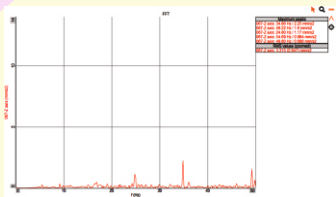


Before Installing of Dynemech
Antivibration Table



After Installing of Dynemech
Antivibration Table



Dynemech anti-vibration table **Series DIT-E-LDLM-HC** is suitable for all types of measuring and testing equipment used in the labs and clean rooms. These tables have a levelling adjustable leg. By rotating the nut, the level of the granite top can be maintained using precision spirit level/electronic level gauge. This levelling adjustment leg ensures the rigid placement of the frame on the ground. The second stage levelling is done using inverted DLM mounts between the frame top and the granite slab base. The nut of the inverted DLM is adjusted so that the granite rests securely on all contact points and there is no movement of the granite over the frame.

The table top is a honeycomb table top. The core of this table top is composed of hexagon cells which provides remarkable strength to weight ratio ensuring a robust and stable surface which is light weight and easier to handle. The core is sandwiched between two layers of high quality material such as SS 304 or Magnetic SS. The frame of the table is made from the structural steel having grade IS 2062. Powder coating on the frame is done to maintain corrosion free service life of the table. The vibration isolation is achieved at 2 stages. The first stage is in the legs where the anti-vibration pads are assembled in the levelling leg which damps medium to high frequency vibrations. The second level of vibration isolation is achieved by using inverted DLM which also house single or double stack of DP1 vibration insulation plate which is tuned to low natural frequency and damps most of the incoming vibrations above 15 Hz. Optional sturdy castor wheels are also provided for heavy versions for easy relocation of the table. Keyboard, CPU and monitor stands, Drawers and cabinets can also be accommodated in these tables as per the application requirements.

These tables undergo a modern manufacturing process and rigorous testing before being supplied to customers. The entire process is carried out in our dedicated in-house facility.

APPLICATIONS:

- Precision Instruments: Balances, Galvanometers, Electronic Microscopes, Atomic Absorption Spectrophotometers
- Laboratories: Chemical analysis, food sample testing, scientific research
- Industries: Pharmaceuticals, Food and Beverage, Chemicals
- Semiconductor Manufacturing: Precision and accuracy in R&D
- Weighing Experiments: High-precision balances and measuring instruments
- Scientific Applications: Metrology Equipment , Thermogravimetric Analysis (TGA) , Digital Hardness Testers, HighResolution Microscopes, Surface Roughness Testers

Sl. No.	Model	Load (Kg.)	Length (mm)	Width (mm)	Height at mean position (mm)	Honeycomb Table Top Thickness (mm)	Natural Frequency (Hz)
1.	DIT-E-LDLM-HC-01	upto 400	500	500	900	80	7-8
2.	DIT-E-LDLM-HC-01/S1	upto 400	630	630	900	80	7-8
3.	DIT-E-LDLM-HC-02	upto 850	750	500	900	80	7-8
4.	DIT-E-LDLM-HC-03	upto 1150	900	600	900	100	7-8
5.	DIT-E-LDLM-HC-04	upto 1250	1000	800	900	100	7-8
6.	DIT-E-LDLM-HC-05	upto 1250	1200	1000	900	150	7-8
7.	DIT-E-LDLM-HC-06	upto 1250	1500	900	900	150	7-8
8.	DIT-E-LDLM-HC-07	upto 1250	1800	1200	900	200	7-8

HONEYCOMB TABLETOP TECHNICAL SPECIFICATIONS :		
1.	Size	As per standard.
2.	Holes	M6 tapped holes on 25mm grid.
3.	Bottom Skin	5mm thick epoxy coated steel.
4.	Core	0.25mm thick aluminum honeycomb core.
5.	Nylon Cups	Nylon cups under each tapped hole.
6.	Flatness	+/- 0.1mm flatness on top over 300mmx300mm area (non-cumulative error)
7.	Side Wall	Finished with black form sheet.
8.	Side Wall	Compressed wooden particle boards as side walls to dampen acoustic vibration.