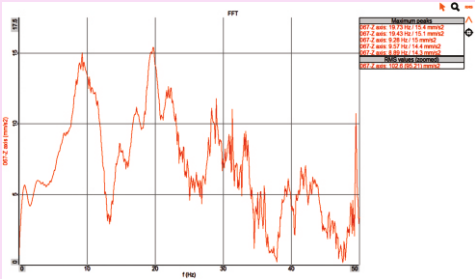
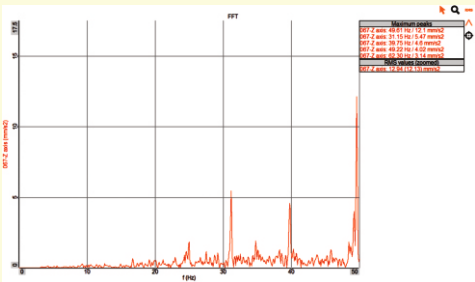




Before Installing of Dynemech  
Antivibration Table



After Installing of Dynemech  
Antivibration Table



Dynemech Anti Vibration Tables **Series DIT-E-HC** are ideal for Testing/Quality Laboratories working on optical experiments, spectroscopy, interferometry, holography, microscopy, nano-positioning, etc. The vibrations are isolated using Double-Layered Dp Elastomeric Vibration Isolation Sheets. These Anti-Vibration Tables have a lightweight but rigid Honeycomb tabletop. We can select up-to five layers of vibration insulation plate depending upon the vibrations present, significantly reducing vibrations in the range of 70-95% depending upon the frequency of the incoming vibrations. The core of Honeycomb table top is composed of hexagon cells which provides remarkable strength to weight ratio ensuring a robust and stable surface which is light weight and easier to handle. The core is sandwiched between two layers of high quality material such as SS 304 or Magnetic SS. The honeycomb table top is customizable , pls. share the required detailed specifications in the RFQ.

**APPLICATIONS:** Used in industries with requirement for mounting optical assemblies and modules, like lasers, lenses, and other precision equipment, Microscopy and Research Labs, Balance and Precision Testing Equipment, Seismic and Vibration-Sensitive Environments.

Sl. No.	Model	Load (Kg.)	Length (mm)	Width (mm)	Height at mean position (mm)	Honeycomb Table Top Thickness (mm)	Natural Frequency (Hz)
1.	DIT-E-HC-01-75759	upto 450	750	750	900	100	7-8
2.	DIT-E-HC-02-90609	upto 500	900	600	900	100	7-8
3.	DIT-E-HC-03-1008090	upto 600	1000	800	900	100	7-8
4.	DIT-E-HC-04-12010090	upto 700	1200	1000	900	150	7-8
5.	DIT-E-HC-05-15012090	upto 800	1500	1200	900	150	7-8
6.	DIT-E-HC-06-18012090	upto 850	1800	1200	900	150	7-8
7.	DIT-E-HC-07-24015090	upto 1000	2400	1500	900	200	7-8

OTHER TECHNICAL SPECIFICATIONS :

A. Table Top - Honeycomb		
1.	Top Plate Skin	5mm +/-1 mm thickness, 410 series ferromagnetic SS plate, smooth sanded finish
2.	Side Walls	2.0 mm thickness carbon steel plate with damped wood composite. Vinyl covered
3.	Bottom Skin	4.5 mm thickness carbon steel plate epoxy painted finish.
4.	Core	Plated steel honeycomb(0.25 mm foil, 2.9cm2 cell size
5.	Surface Flatness	+/- 0.1 mm over 600 mm square / as per standard.
6.	Mounting Holes Matric	M6 holes on 25mm grid on table top and <=37.5 mm from borders/ as per standard.
7.	Hole/Core Sealing	Easy clean cylindrical cup (21mm deep)
8.	Damping	Broadband Standard Damping
B. Elastomeric Legs Specifications		
1.	Levelling	with the help of bottom DLM Mounts
2.	Height Adjustment	8mm
3.	Vibration Isolation Efficiency	65-70%