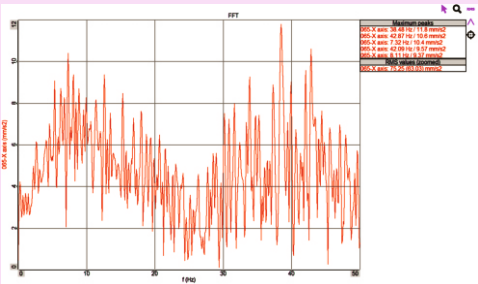
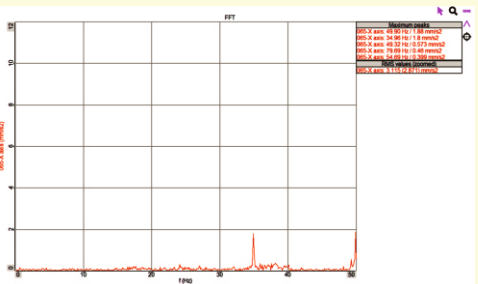




Before Installing of Dynemech
Antivibration Table



After Installing of Dynemech
Antivibration Table



Dynemech Anti-Vibration Table **Series DIT-E-CM** is suitable for all types of measuring and testing equipment used in the labs and clean rooms. These tables have a levelling adjustable leg. By rotating the nut, the level of the Corian Marble top can be maintained using precision spirit level/electronic level gauge. The top is made from a heavy 12mm or 24mm thick high strength marble which ensures rigidity and keeps the system stable and ensures lower natural frequency and high damping efficiency. The top surface of this slab is smooth and lustrous. The vibrations are isolated using Double-Layered Dp Elastomeric Vibration Isolation Sheets. We can select up-to five layers of vibration insulation plate depending upon the vibrations present, significantly reducing vibrations in the range of 70-95% depending upon the frequency of the incoming vibrations. The frame of the table is made from the structural steel having grade IS 2062. Powder coating on the frame is done to maintain corrosion free service life of the table. The vibration isolation is achieved at 2 stages. The first stage is in the legs where the anti-vibration pads are assembled in the levelling leg which damps medium to high frequency vibrations. The second level of vibration isolation is achieved in 5 layered stacks of a special profiled vibration insulation plates. This stack of the vibration insulation plate is tuned to low natural frequency and damps most of the incoming vibrations above 15 Hz. Optional sturdy castor wheels are also provided for heavy versions for easy relocation of the table. Keyboard, CPU and monitor stands. Drawers and cabinets can also be accommodated in these tables as per the application requirements. These tables undergo a modern manufacturing process and rigorous testing before being supplied to customers. The entire process is carried out in our dedicated in-house facility.

APPLICATIONS: The Vibration Isolated Table (VIT) finds usage in critical areas where reading accuracy of instruments like Balances, Galvanometers, Electronic Microscopes and Atomic Absorption Spectrophotometers, is affected by vibrations ; In Laboratories and Research Facilities for accurate chemical analysis, food sample testing, sensitive scientific research , in pharmaceuticals, food and beverage & chemical industries; in Semiconductor Manufacturing and R&D ; in Weighing Experiments and Scientific Analysis.

| Sl. No. | Model | Load (Kg.) | Length (mm) | Width (mm) | Height at mean position (mm) | Corian Marble Table Top Thickness (mm) | Natural Frequency (Hz) |
|---------|-------------|------------|-------------|------------|------------------------------|--|------------------------|
| 1. | DIT-E-CM-01 | upto 100 | 500 | 500 | 800-1000 | 12 | 7-8 |
| 2. | DIT-E-CM-02 | upto 150 | 630 | 630 | 800-1000 | 12 | 7-8 |
| 3. | DIT-E-CM-03 | upto 200 | 750 | 500 | 800-1000 | 24 | 7-8 |
| 4. | DIT-E-CM-04 | upto 300 | 900 | 600 | 800-1000 | 24 | 7-8 |
| 5. | DIT-E-CM-05 | upto 400 | 1000 | 800 | 800-1000 | 24 | 7-8 |
| 6. | DIT-E-CM-06 | upto 450 | 1200 | 1000 | 800-1000 | 24 | 7-8 |
| 7. | DIT-E-CM-07 | upto 500 | 1800 | 1500 | 800-1000 | 24 | 7-8 |

OTHER TECHNICAL SPECIFICATIONS :

| A. Pneumatic Legs Specifications | | |
|----------------------------------|--------------------------------|------------------------------------|
| 1. | Levelling | with the help of bottom DLM Mounts |
| 2. | Height Adjustment | 8mm |
| 3. | Vibration Isolation Efficiency | 65-70% |