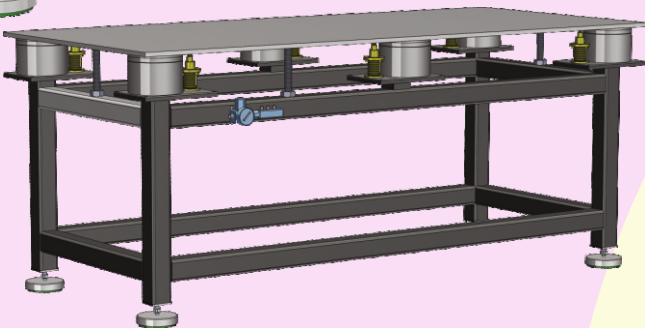
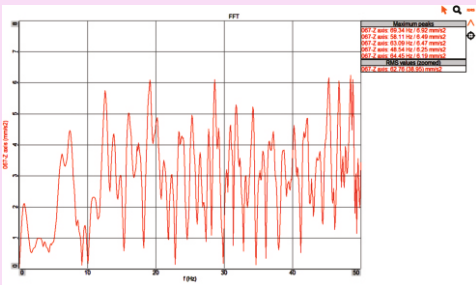
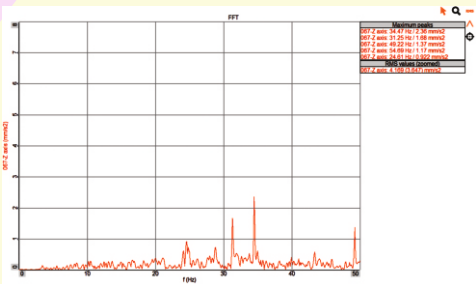


Before Installing of Dynemech
Antivibration Table



After Installing of Dynemech
Antivibration Table



Dynemech Anti-Vibration Table **Series DIT-AM-CM** is suitable for all types of measuring and testing equipment used in the labs and clean rooms. The body of the table is made from low carbon steel powder coated outer frame provide sturdiness to the structure of the table. The natural frequency of this table is in the range of 1-1.5 Hz which damps out most of the vibrations above 3 Hz. Available self-levelling accuracy options are +/- 0.010 and +/- 0.10 with minimum setting time, depending upon the application requirement. The top is made from a heavy 12mm or 24mm thick high strength marble which ensures rigidity and keeps the system stable and ensures lower natural frequency and high damping efficiency. The top surface of this slab is smooth and lustrous. These tables have a levelling adjustable leg. The first stage levelling is done by rotating the nut, the level of the Corian marble top can be maintained using precision spirit level/electronic level gauge. The frame of the table is made from the structural steel having grade IS 2062. Monitor stand, drawers, CPU space is provided as per the customer's requirement. The body of the table is Powder coated to achieve corrosion free service life of the table. The vibration isolation is achieved at 2 stages. The first stage is in the legs where the anti-vibration pads are assembled in the levelling leg which damps medium to high frequency vibrations. The second level of vibration isolation is achieved by the membrane air springs which isolates a wide low to high frequency range of the incoming vibrations. Optional sturdy castor wheels are also provided for heavy versions for easy relocation of the table. These tables undergo a modern manufacturing process and rigorous testing before being supplied to customers. The entire process is carried out in our dedicated in-house facility.

APPLICATIONS: The Vibration Isolated Table (VIT) finds usage in critical areas where reading accuracy of instruments like Balances, Galvanometers, Electronic Microscopes and Atomic Absorption Spectrophotometers, is affected by vibrations ; In Laboratories and Research Facilities for accurate chemical analysis, food sample testing, sensitive scientific research , in pharmaceuticals, food and beverage & chemical industries; in Semiconductor Manufacturing and R&D ; in Weighing Experiments and Scientific Analysis.

Sl. No.	Model	Load (Kg.)	Length (mm)	Width (mm)	Height at mean position (mm)	Corian Marble Table Top Thickness (mm)	Natural Frequency (Hz)
1.	DIT-AM-CM-01	upto 250	500	500	800-1000	12	1.5-2.0
2.	DIT-AM-CM-02	upto 250	630	630	800-1000	12	1.5-2.0
3.	DIT-AM-CM-03	upto 450	750	500	800-1000	24	1.5-2.0
4.	DIT-AM-CM-04	upto 1250	900	600	800-1000	24	1.5-2.0
5.	DIT-AM-CM-05	upto 1250	1000	800	800-1000	24	1.5-2.0
6.	DIT-AM-CM-06	upto 1250	1200	1000	800-1000	24	1.5-2.0
7.	DIT-AM-CM-07	upto 1500	1800	1500	800-1000	24	1.5-2.0

OTHER TECHNICAL SPECIFICATIONS :

A. Pneumatic Legs Specifications		
1.	Levelling	with the help of bottom DLM Mounts
2.	Levelling Repeatability	+/- 0.15 mm
3.	Height Adjustment	8 mm
4.	Vibration Isolation Efficiency	90-95%