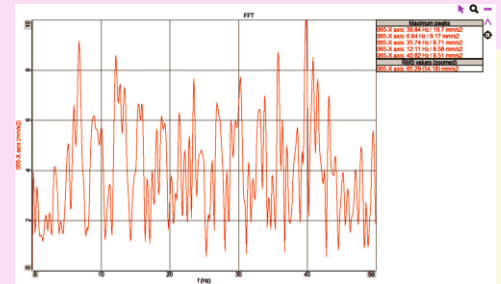
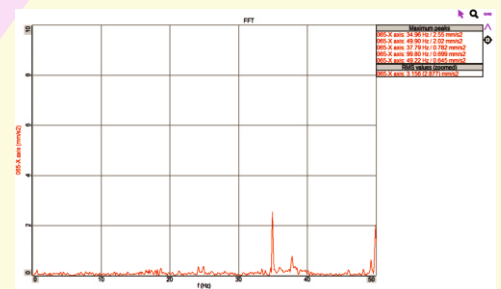


Before Installing of Dynemech Antivibration Table



After Installing of Dynemech Antivibration Table



Dynemech Anti Vibration Table **Series DIT-AM-HC** has natural frequency in the range of 1-1.5 Hz along with self levelling feature. Available self levelling accuracy options are +/- 0.010 and +/- 0.10 with minimum setting time, depending upon the application requirement. Membrane Air Springs are used which damps most of the incoming vibrations above 3 Hz. Bottom levelling feet DLM provide levelling and vibration reduction. Level difference on top of the Honeycomb Table Top due to any load change and the equipment is compensated within milliseconds. The core of Honeycomb table top is composed of hexagon cells which provides remarkable strength to weight ratio ensuring a robust and stable surface which is light weight and easier to handle. The core is sandwiched between two layers of high quality material such as SS 304 or Magnetic SS. The honeycomb table top is customizable, pls. share the required detailed specifications in the RFQ.

APPLICATIONS: Used in industries with requirement for mounting optical assemblies and modules, like lasers, lenses, and other precision equipment, Microscopy and Research Labs, Balance and Precision Testing Equipment, Seismic and Vibration-Sensitive Environments.

Sl. No.	Model	Load (Kg.)	Length (mm)	Width (mm)	Height at mean position (mm)	Honeycomb Table Top Thickness (mm)	Natural Frequency (Hz)
1.	DIT-AM-HC 01-75759	upto 450	750	750	900	100	1.0-1.5
2.	DIT-AM-HC 02-90609	upto 500	900	600	900	100	1.0-1.5
3.	DIT-AM-HC 03-1008090	upto 600	1000	800	900	100	1.0-1.5
4.	DIT-AM-HC 04-12010090	upto 700	1200	1000	900	150	1.0-1.5
5.	DIT-AM-HC 05-15012090	upto 800	1500	1200	900	150	1.0-1.5
6.	DIT-AM-HC 06-18012090	upto 850	1800	1200	900	150	1.0-1.5
7.	DIT-AM-HC 07-24015090	upto 1000	2400	1500	900	200	1.0-1.5

OTHER TECHNICAL SPECIFICATIONS :

A. Table Top - Honeycomb		
1.	Top Plate Skin	5mm +/-1 mm thickness, 410 series ferromagnetic SS plate, smooth sanded finish
2.	Side Walls	2.0 mm thickness carbon steel plate with damped wood composite. Vinyl covered
3.	Bottom Skin	4.5 mm thickness carbon steel plate epoxy painted finish.
4.	Core	Plated steel honeycomb(0.25 mm foil, 2.9cm2 cell size
5.	Surface Flatness	+/- 0.1 mm over 600 mm square / as per standard.
6.	Mounting Holes Matric	M6 holes on 25mm grid on table top and <=37.5 mm from borders/ as per standard.
7.	Hole/Core Sealing	Easy clean cylindrical cup (21mm deep)
8.	Damping	Broadband Standard Damping
B. Elastomeric Legs Specifications		
1.	Levelling	Auto Levelling by automatic Levelling Valves
2.	Levelling Repeatability	+/- 0.15 mm
3.	Height Adjustment	8 mm
4.	Vibration Isolation Efficiency	90=95%