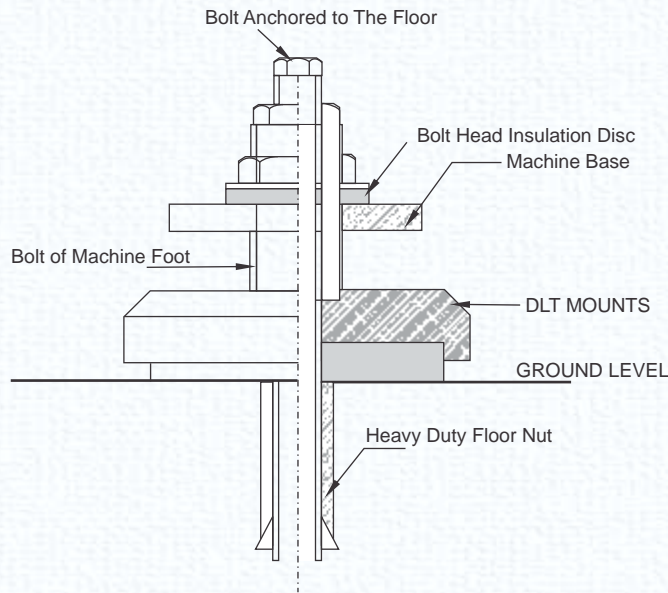


## SCREW SUPPORT MOUNTS, Series DLT



DLT Series mounts are used in the machines which must be anchored to the floor along with levelling and vibration reduction. Bolts with thru holes are provided in the machine foot and anchor bolt passes from the machine foot, mount and anchored in the floor nut. An insulating disc is provided between the nut and the machine foot to prevent vibration from transmitting in the floor via the bolt. The dimple and the thru hole in the mount are provided as per the bolt specifications of the machine.

Model	Load Kg/pc	Model	Load Kg/pc	Model	Load Kg/pc	Model	Load Kg/pc	Model	Load Kg/pc	Dia (D) mm	H u/m	H p/s1	H s2
DLT1-u	150	DLT1-m	190	DLT1-p	75	DLT1-s2	125	DLT1-s1	80	58	21	26	31
DLT2-u	350	DLT2-m	450	DLT2-p	175	DLT2-s2	300	DLT2-s1	200	85	24	29	34
DLT3-u	600	DLT3-m	800	DLT3-p	300	DLT3-s2	550	DLT3-s1	375	110	28	33	38
DLT4-u	900	DLT4-m	1150	DLT4-p	500	DLT4-s2	850	DLT4-s1	575	135	30	35	40
DLT5-u	1400	DLT5-m	1750	DLT5-p	700	DLT5-s2	1250	DLT5-s1	800	165	30	35	40
DLT6-u	1900	DLT6-m	2400	DLT6-p	950	DLT6-s2	1700	DLT6-s1	1100	185	30	35	40
DLT7-u	2500	DLT7-m	3200	DLT7-p	1250	DLT7-s2	2200	DLT7-s1	1500	215	35	40	45